



#### HAKKIMIZDA

1999 yılında büyük hedeflerle yola çıkılarak kurulan Villa Yapı; üretimine ilk olarak prefabrike konutlar, ofis binaları, sosyal tesisler, deprem evleri ve hafif çelik yapılar ile başlamıştır. Sürekli büyümeyi kendine hedef olarak belirleyen Villa Yapı, zamanla üretim ağını genişleterek, çelik konstrüksiyon yapılar ve konteyner imalatıyla birlikte sektörün lider firmaları arasına girmeyi başarmıştır.

#### Firmamız;

Prefabrike konutlar, şantiye binaları, sosyal tesisler, hastaneler, okullar, ofis ve yaşam konteynerleri, çelik konstrüksiyon yapılar üretmektedir. Yurtiçi ve yurtdışında müşterilerine, 19 yılı aşkın süredir başarıyla hizmet vermektedir. Müşteri memnuniyetini esas alarak çalışan teknik ve idari personel, müşteri ihtiyaçları doğrultusunda hızlı ve kaliteli çözümler sunmaktadır.

Villa Yapı, İstanbul Tuzla'daki 5000 m<sup>2</sup> showroomu ve Kocaeli Gebze'deki 20.000 m<sup>2</sup> fabrikasında 300'ü aşkın çalışanıyla ülke ekonomisine ve istihdamına katkı sağlamaktadır.

#### Kocaeli Gebze'deki üretim tesislerinde;

- Prefabrik yapılarda 15000 m<sup>2</sup>
- Modüler konteynerde 500 adet
- Demonte konteynerde 300 adet
- Hafif çelik yapılarda 7000 m<sup>2</sup>
- Ağır çelik fabrika binalarında 5000 m<sup>2</sup>

Aylık Üretim kapasitesine sahiptir.

#### ABOUT US

In 1999 three young businessmen established Villa Yapı with a grand vision and a goal to build quality prefabricated houses, office buildings, social and community facilities, earth quake houses and light steel structures. The continuous growth enabled Villa Yapı to expand their core business in to steel construction and Container production to be one of the leaders in the industry.

#### Our company;

Various sizes of prefabricated homes, work site buildings, social and community facilities, hospitals, Schools, Office and living containers, steel structures are build for domestic and International customers, successfully, for the past 19 years. Customer satisfaction being the main goal, technical and administrative staff can offer fast and quality solutions to customers projects.

With Tuzla-Istanbul 5000 m<sup>2</sup> showroom Gebze-Kocaeli 20000 m<sup>2</sup> manufacturing facility with over 300 qualified associates Villa yapı is proud to contribute to Turkish economy.

#### Our manufacturing capacity per month;

- Prefabricated Buildings 15000 m<sup>2</sup>
- Modular Containers 500 Pieces
- Disassembled Containers 300 Pieces
- Light Steel Buildings 7000 m<sup>2</sup>
- Heavy Steel Buildings 5000 m<sup>2</sup>





AKKUYU ENERJİ SANTRALİ

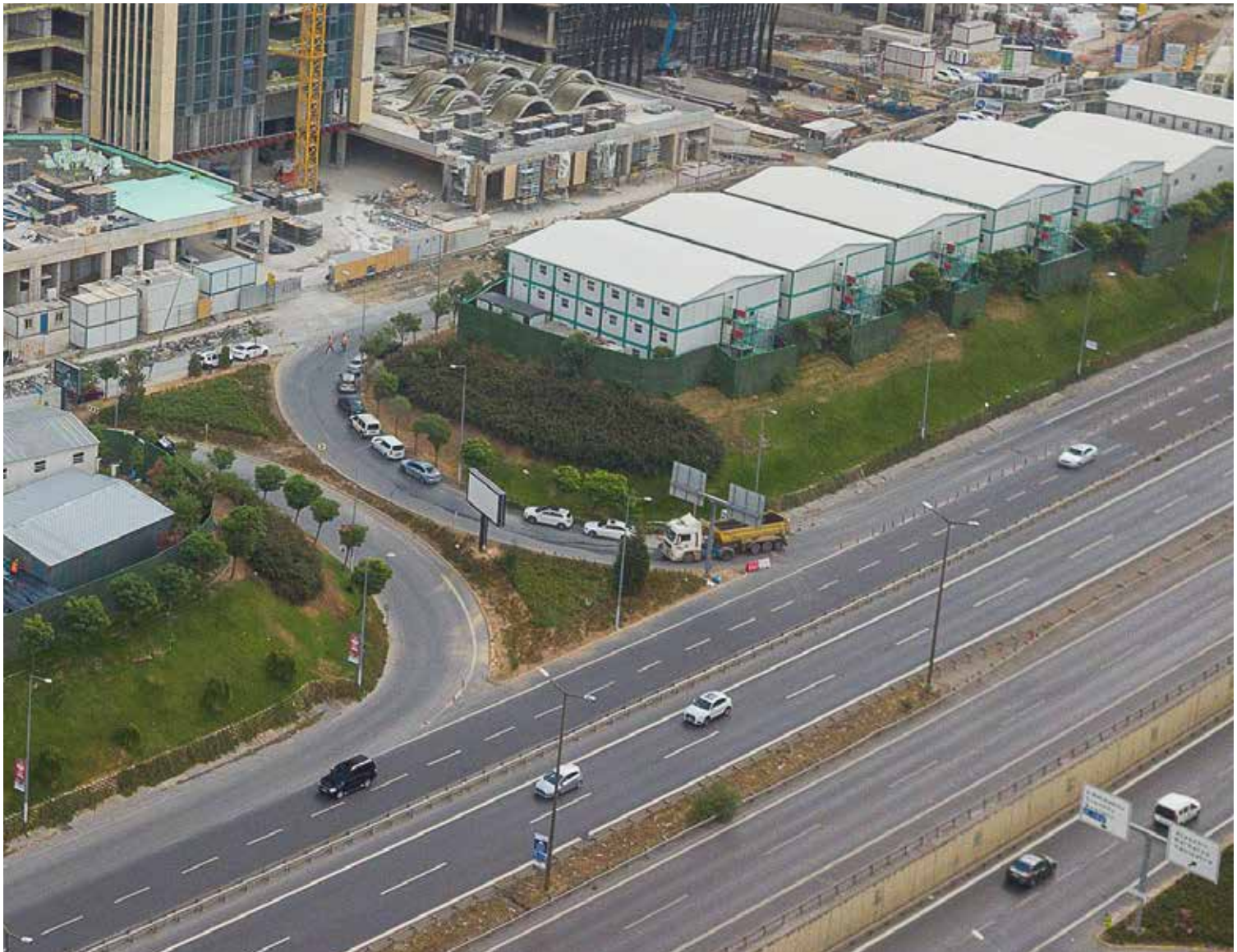
**MERSİN**



FİNANS MERKEZİ

İSTANBUL

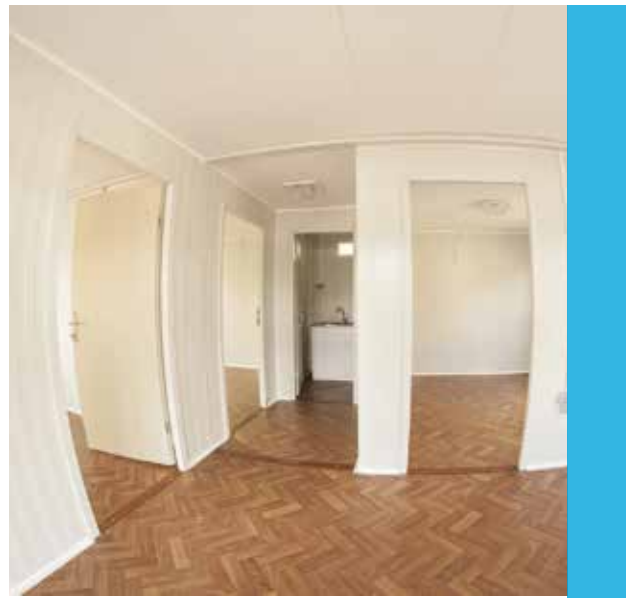






TEKNO PARK  
**GEBZE TEKNİK ÜNİ.**









INTERCITY

İSTANBUL PARK





TEMA İSTANBUL

YATAKHANE  
PROJESİ

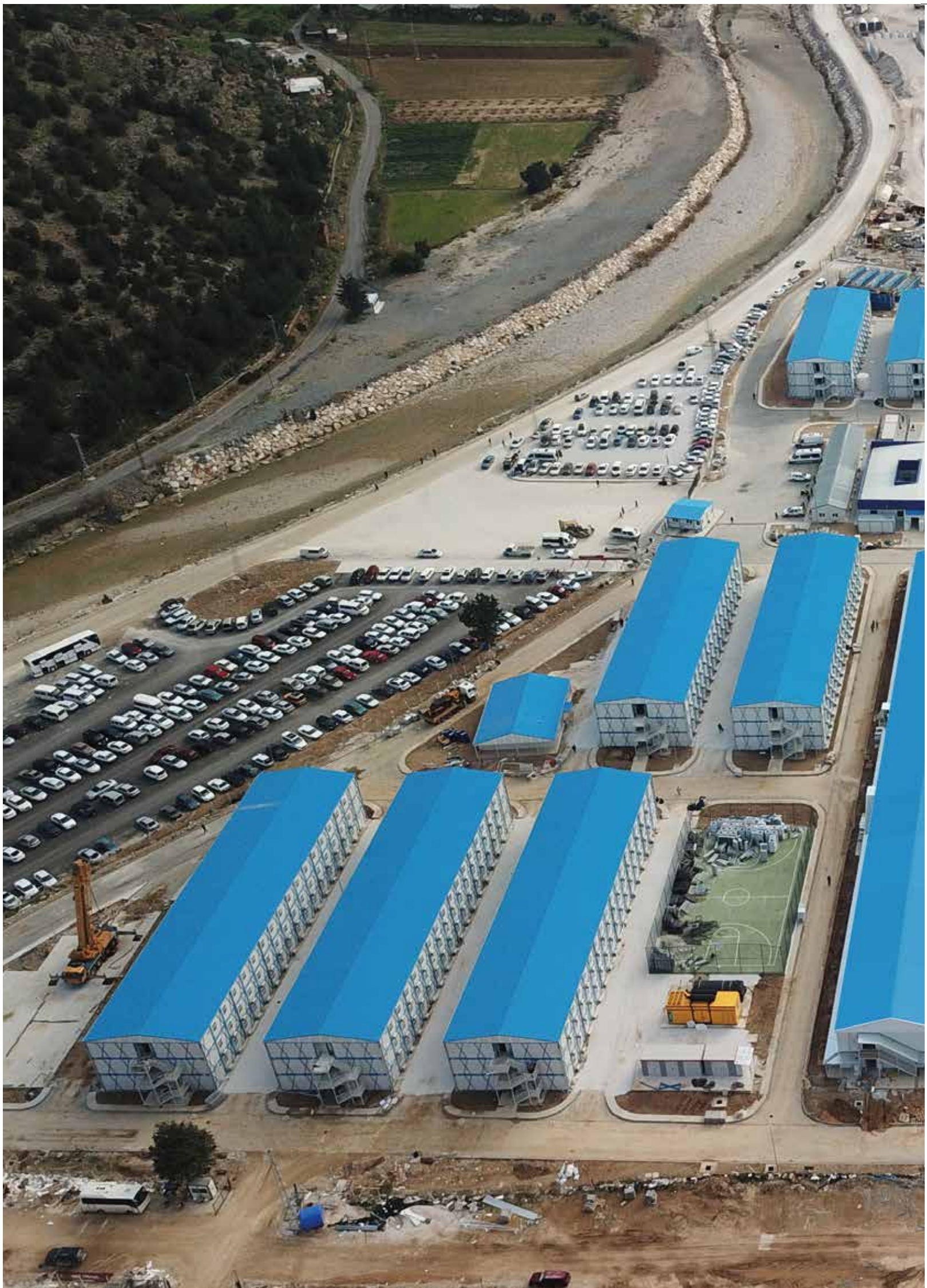




EMLAK KONUT

YATAKHANE  
PROJESİ









SARILAR VİNÇ

YEMEKHANE  
&  
YATAKHANE  
PROJESİ





DKY İNŞAAT

YATAKHANE  
PROJESİ





MÜLTECİ KAMPI

## WC KONTEYNERLERİ



16



[www.villayapi.com](http://www.villayapi.com)





MÜLTECİ KAMPI

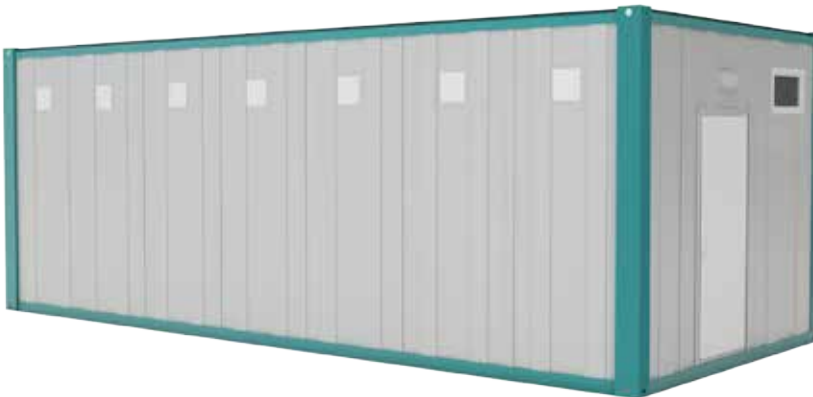
DUŞ  
KONTEYNERLERİ





3m-7m

**STANDART  
WC  
KONTEYNERİ**





3m-7m

**STANDART  
DUŞ  
KONTEYNERİ**



# KONTEYNER TEKNİK ÖZELLİKLERİ / TECHNICAL SPECIFICATIONS





- ① **Alt Şase Çerçevesi**  
2 mm Kalınlığında özel form verilmiş galvaniz kullanılarak konstrüksiyon oluşturulur.
- ①.1 **Alt Taşıma Konstrüksiyonu**  
1.5 mm Kalınlığında özel form verilmiş galvaniz "C" kullanılarak konstrüksiyon oluşturulur.
- ② **Üst Şase Çerçevesi**  
2 mm Kalınlığında özel form verilmiş galvaniz kullanılarak konstrüksiyon oluşturulur.
- ②.2 **Üst Taşıma Konstrüksiyonu**  
1.5 mm Kalınlığında özel form verilmiş galvaniz "C" kullanılarak konstrüksiyon oluşturulur.
- ③ **Köşe Direkleri**  
3 mm Kalınlığında özel form verilmiş galvaniz kullanılarak konstrüksiyon oluşturulur.
- ④ **Dış Duvarlar**  
0,50 mm kalınlığında, mikro lambri baskı, boyalı galvaniz sac arası 40 mm kalınlığında 16kg/m<sup>3</sup> yoğunluğunda polistren köpük kullanılır.
- ⑤ **İç Duvarlar**  
0,50 mm kalınlığında, mikro lambri baskı, boyalı galvaniz sac arası 40 mm kalınlığında 16kg/m<sup>3</sup> yoğunluğunda polistren köpük kullanılır.
- ⑥ **İç Yüzey Tavan Kaplama**  
10mm Beyaz, yüksek kalitede Pvc lambri kullanılır.
- ⑦ **Zemin Kaplama**  
16 mm Kalınlığında betopan levhalar.
- ⑧ **Çatı İzolasyon**  
80mm 14 kg/m<sup>3</sup> Kalınlığında şilte cam yünü kullanılır.
- ⑨ **Çatı Kaplama**  
0.50mm kalınlığında natural galvaniz trapez sac kullanılır.
- ⑩ **Zemin Kaplama**  
2 mm Kalınlığında PVC mineflo,
- ⑪ **İç Kapılar**  
80 x 198 ebatında olup,kanatları çift taraflı md f kapıdır.
- ⑫ **Pencereler**  
95 / 100 Ölçülerinde PVC Pencere PAKPEN Marka,
- ⑬ **"H" Direk**  
Özel form verilmiş boyalı galvaniz sac kullanılır.
- ⑭ **Menfez (WC ve Banyo ünitelerinde, havalandırma maksatlı**  
30x20 cm ebatlarında kullanılır.

- ① **Lower Chassis**  
2 mm Thickness using galvanized special shaped construction is formed
- ①.1 **The Lower Transport Construction**  
1.5 mm galvanized omega special form provided in the thickness construction created using
- ② **Upper Chassis**  
2 mm in thickness galvanized given a specific form construction is formed using
- ②.2 **Transport construction the top**  
1.5 mm galvanized omega special form provided in the thickness construction created using
- ③ **Corner Posts**  
Specially molded 3mm in thickness construction is created using galvanized
- ④ **Exterior Walls**  
0,50 mm thick, cross-painted galvanized trapezoidal sheet 40 mm in thickness foam polir
- ⑤ **Interior Walls**  
0,50 mm thick, cross-painted galvanized trapezoidal sheet 40 mm in thickness foam polir
- ⑥ **Internal Surface Coating Ceiling**  
10mm White, PVC panels used in high quality.
- ⑦ **Flooring**  
16 mm Thickness Cement chipboard Sheets
- ⑧ **Roof Insulation**  
80mm 14 kg / m<sup>3</sup> used for glass wool mat thickness.
- ⑨ **Roofing**  
Natural galvanized steel used in 0.50mm thickness.
- ⑩ **Flooring**  
2 mm Thickness PVC Mineflo
- ⑪ **Interior Doors**  
The dimensions of 80 x 198, MDF door wings are double sided.
- ⑫ **Windows**  
95/100 PAKPEN brand in PVC Window Size
- ⑬ **HR Direct**  
Special shaped created using galvanized
- ⑭ **Culvert**

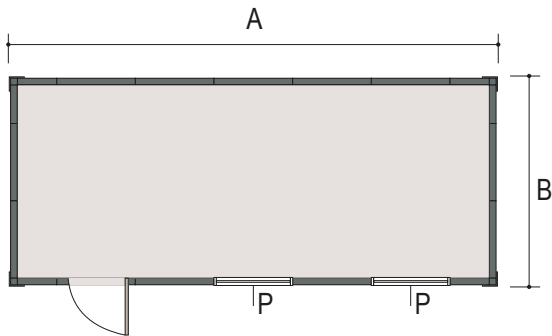
## RANZA DETAYLARI

### BUNK SECTIONS

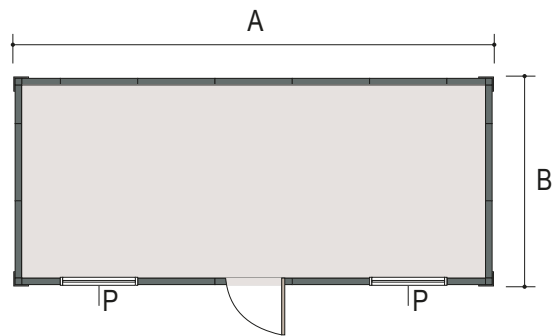
- ① **PVC Profil Kapağı**  
PVC Profile Cover
- ② **30x40 Kutu Profil**  
30x40 Box Profile
- ③ **2 mm Özel Bükümlü Sac**  
2 mm Special Bended Sheet
- ④ **0,80 mm Omega Sac**  
0.80 mm Omega Sheet

## KONTEYNERLER / CONTAINERS

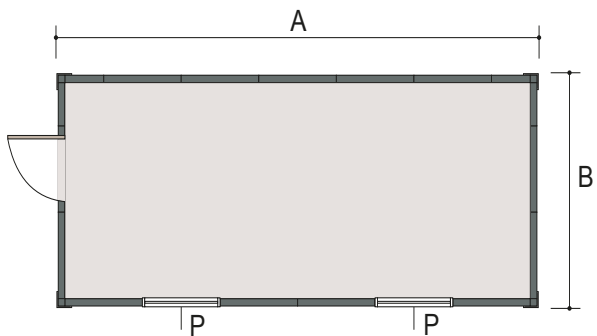




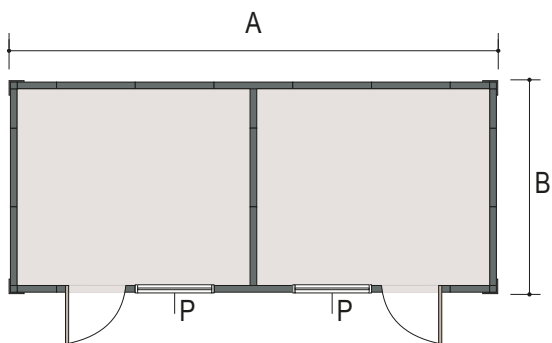
**VK 101** ▀



**VK 102** ▀

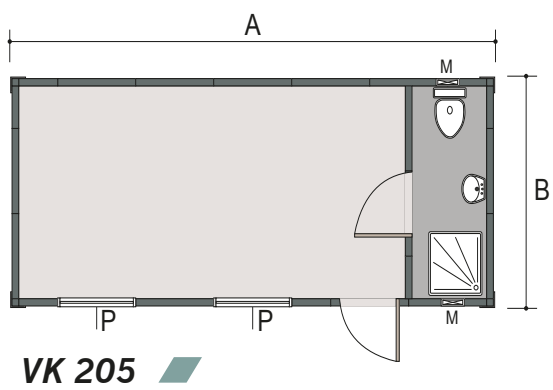
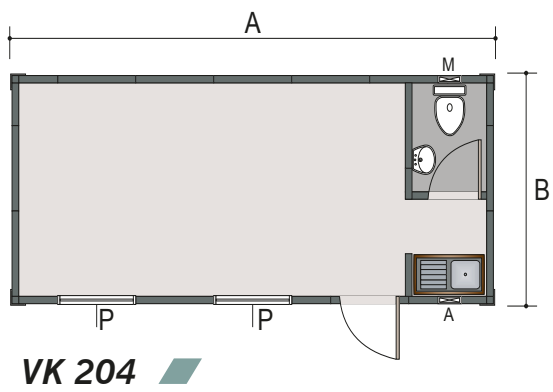
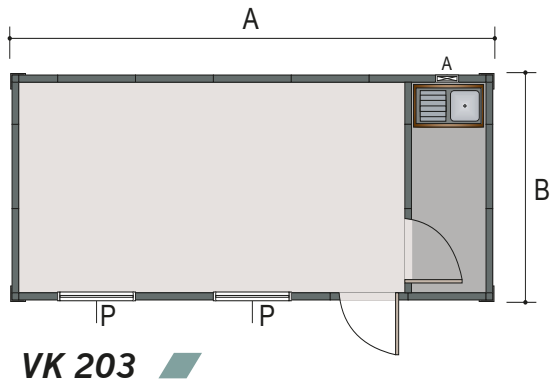
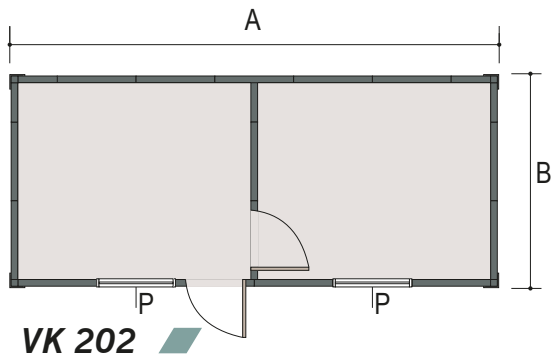


**VK 103** ▀

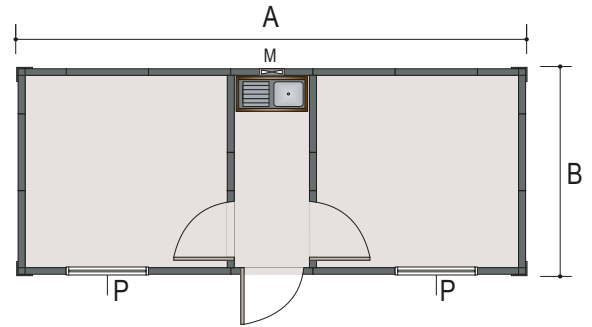


**VK 201** ▀

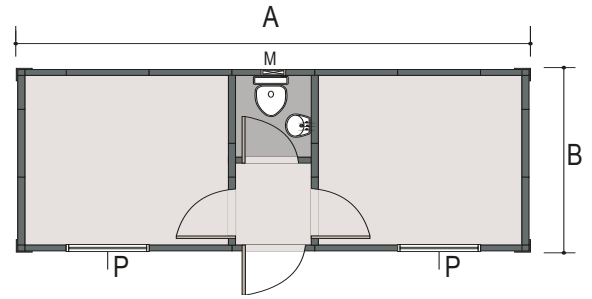
<b>A</b>	7m	6m
<b>B</b>	3m	2,4m



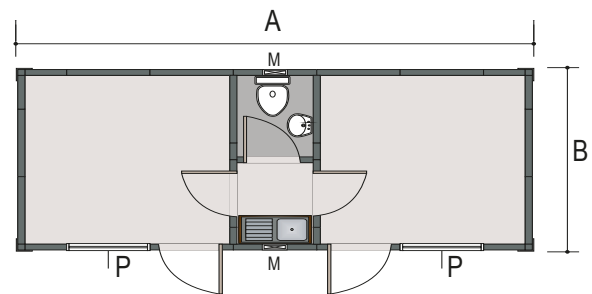




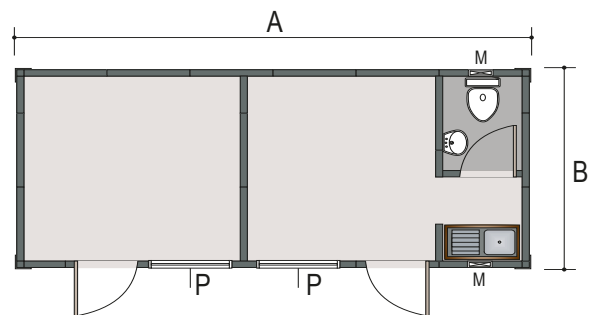
VK 301



VK 302



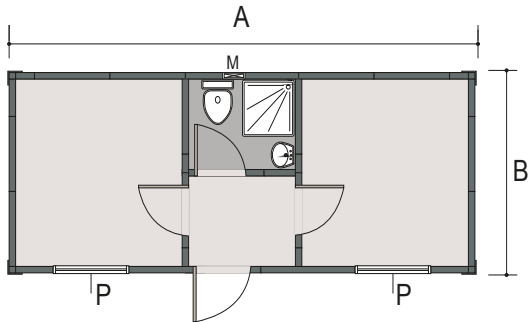
VK 303



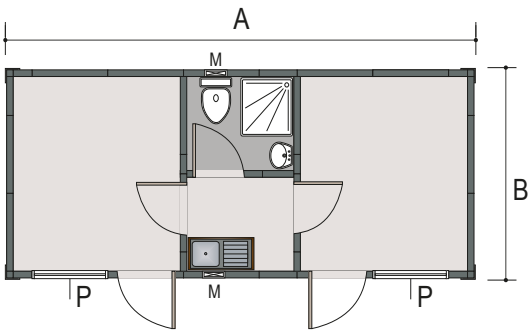
VK 304

<b>A</b>	7m	6m
<b>B</b>	3m	2,4m

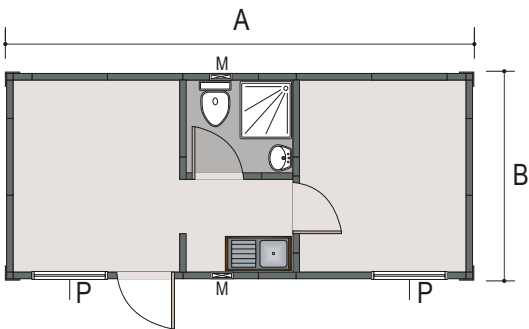
# KONTEYNER PLANLARI / CONTAINER PLANS



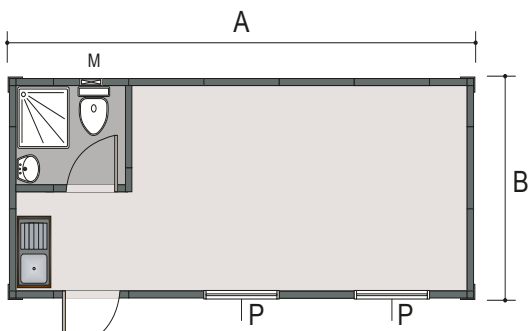
**VK 305** ▀



**VK 306** ▀



**VK 701** ▀



**VK 801** ▀



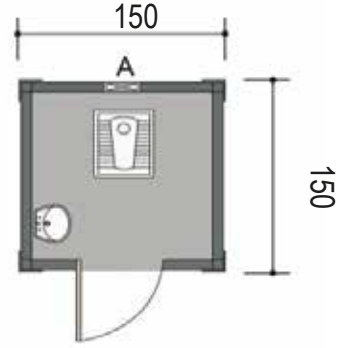
<b>A</b>	7m	6m
<b>B</b>	3m	2,4m



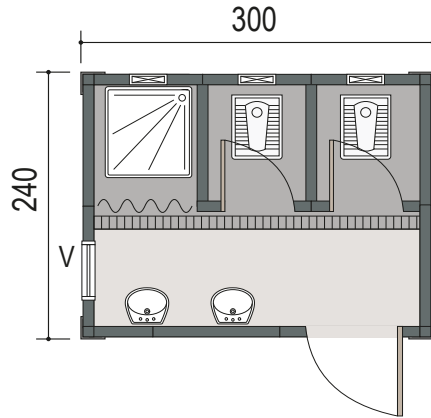
# WC-DUŞ KONTEYNER PLANLARI / WC SHOWER CONTAINER PLANS



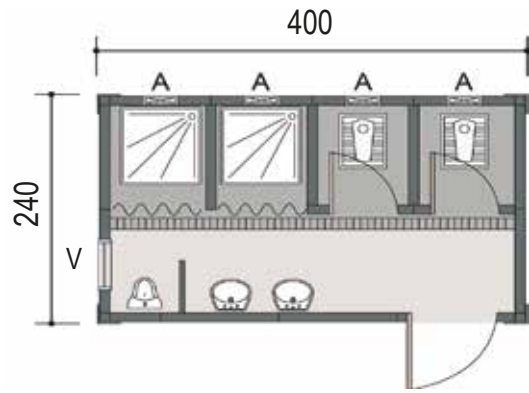
VKW 01

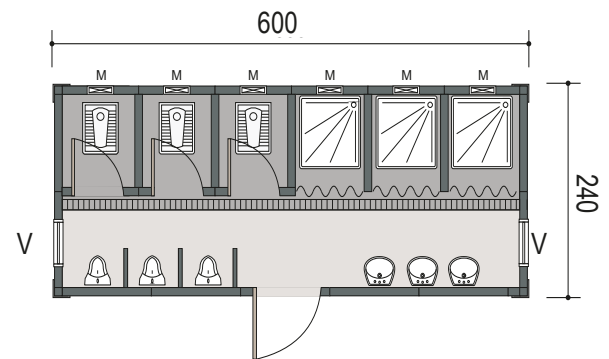


VKW 03

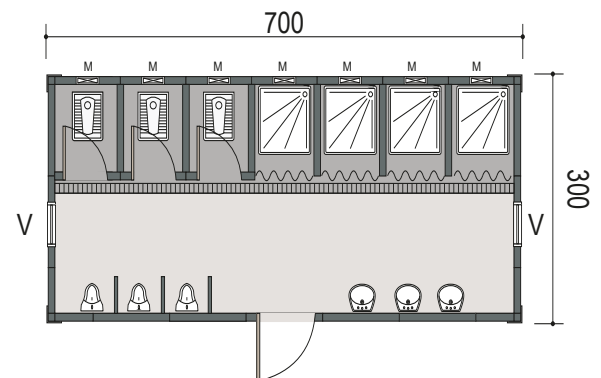


VKW 04

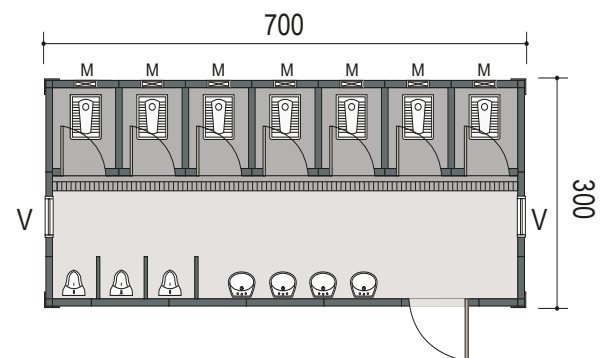




**VKW 06**



**VKW 07**



**VKW 10**

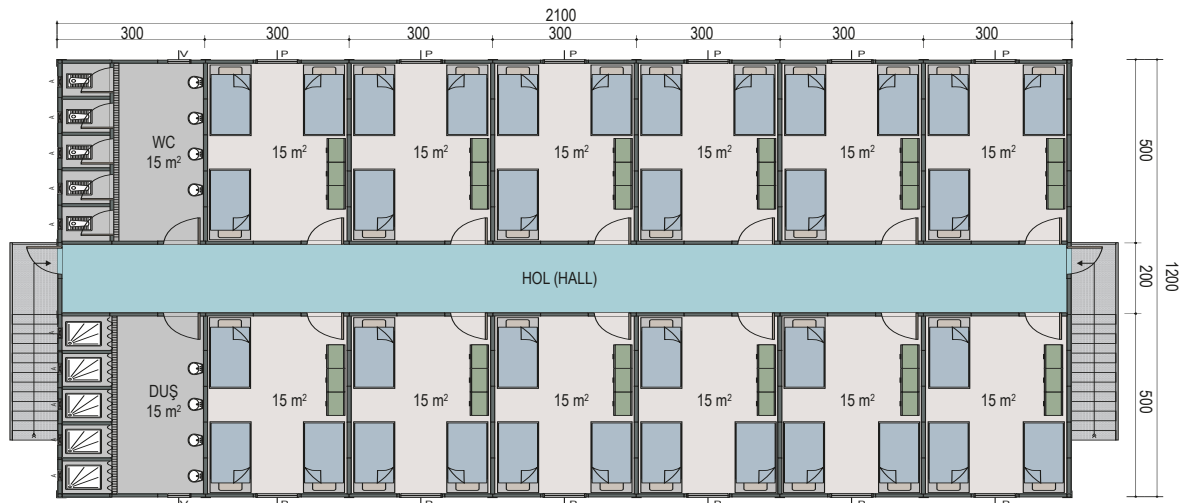




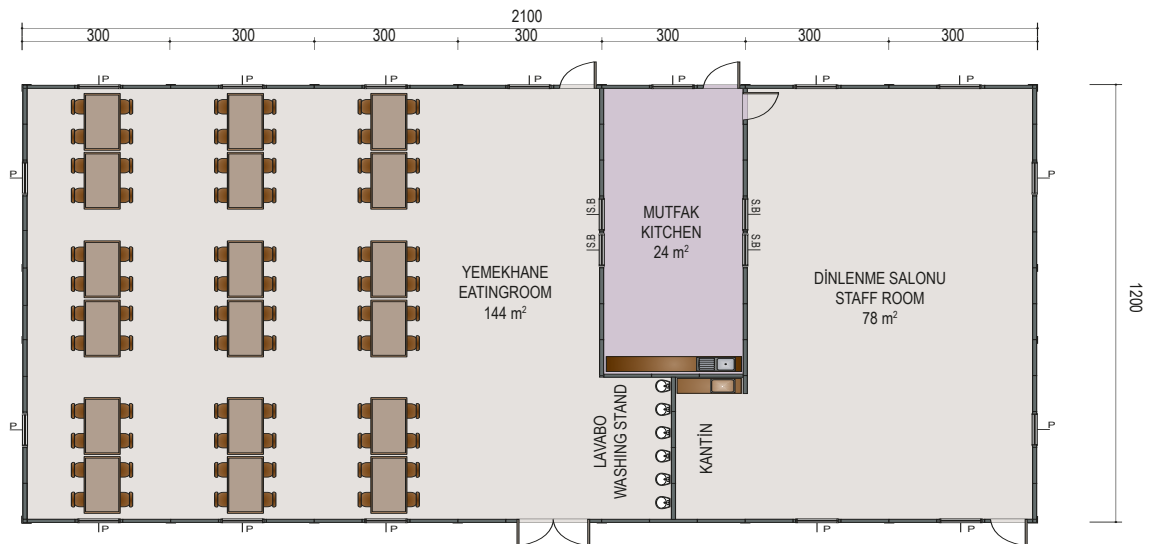
## GRUP KONTEYNERLER / GROUP CONTAINERS



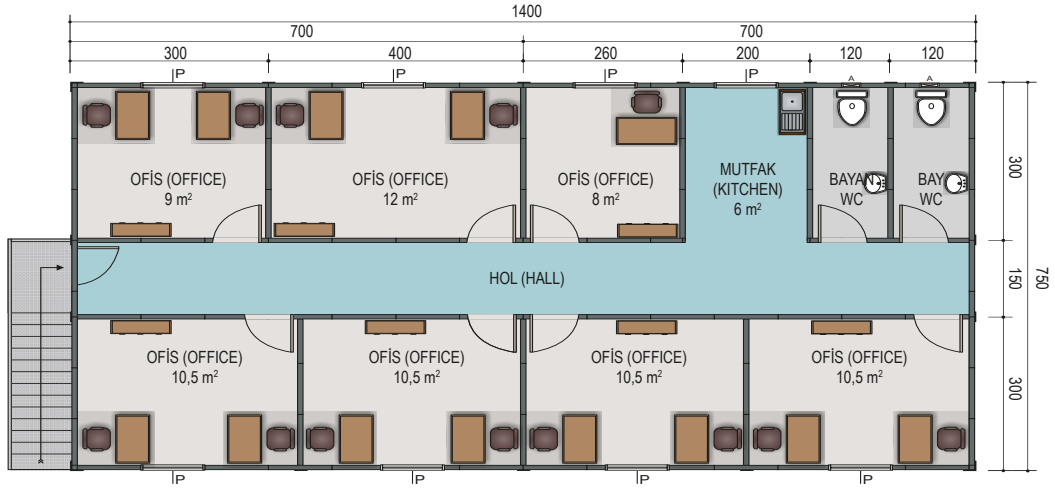




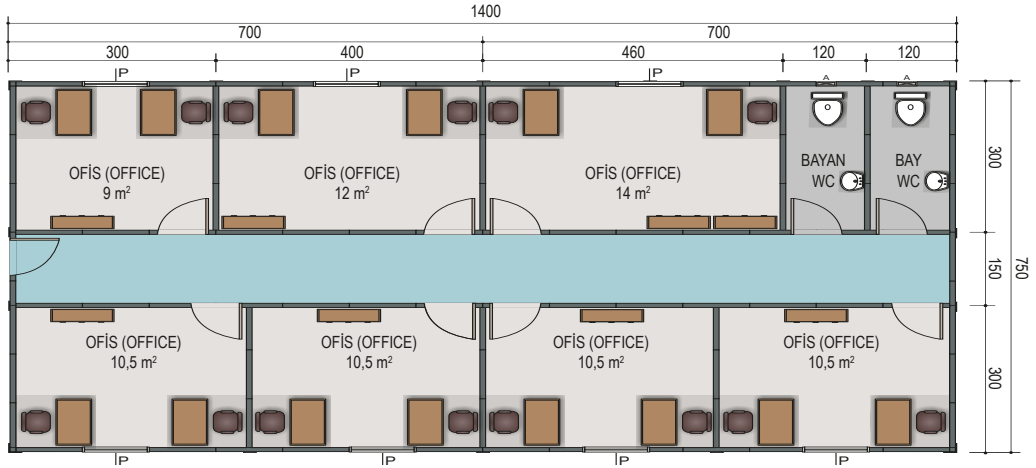
■ Üst Kat Planı - First Floor (252m<sup>2</sup>)



■ Zemin kat - Ground Floor (252m<sup>2</sup>)

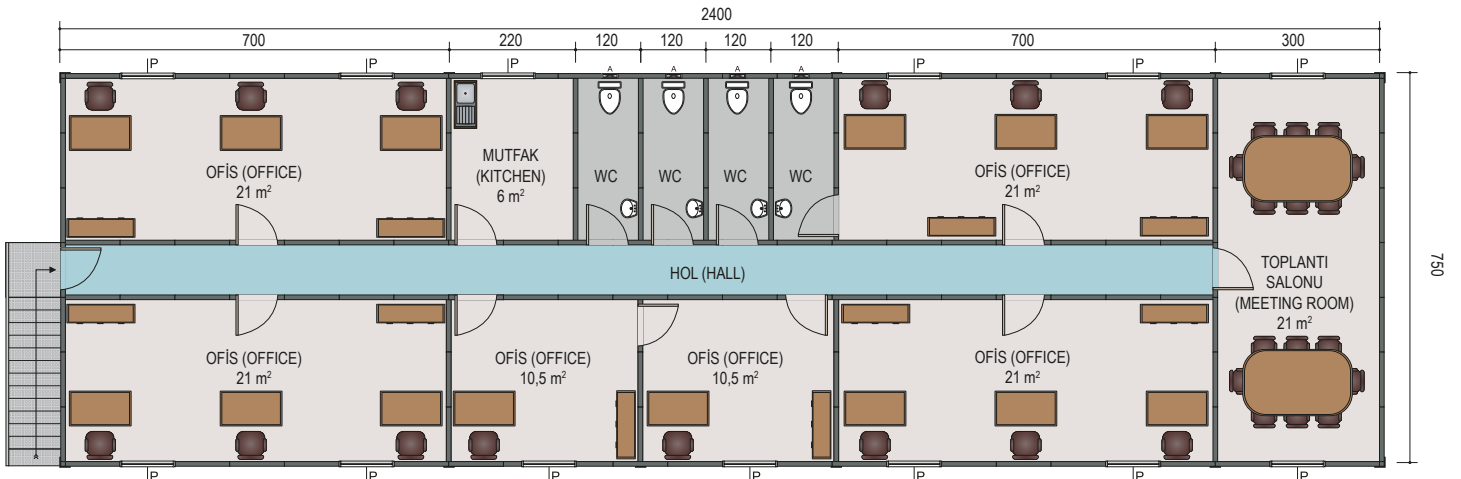


■ Üst Kat - First Floor (105m<sup>2</sup>)

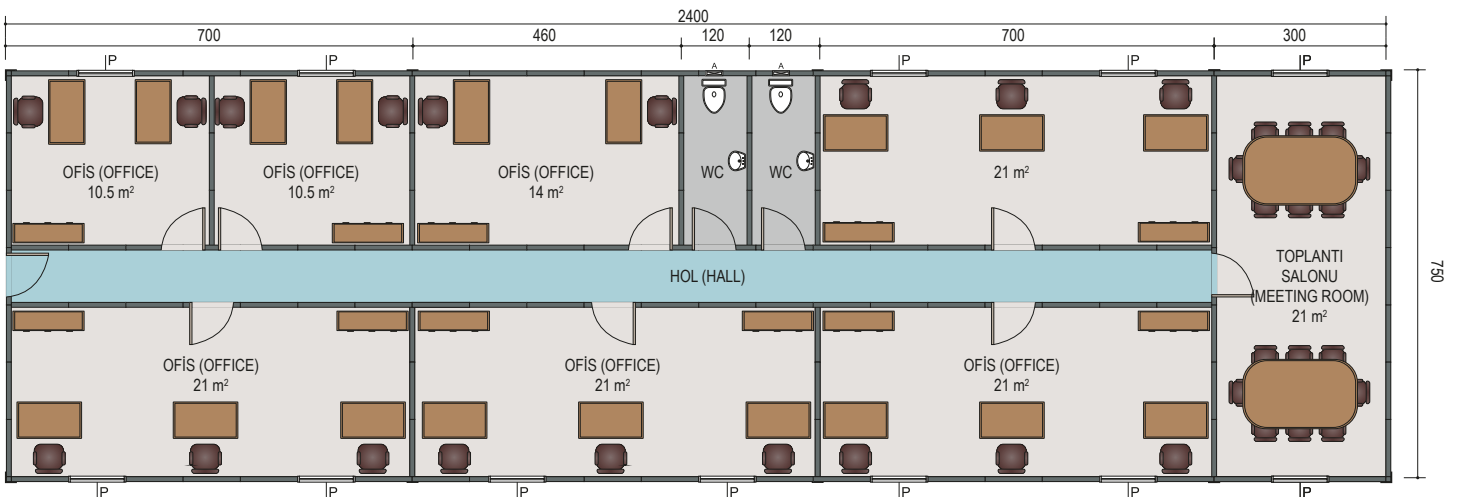


■ Zemin Kat - Ground Floor (105m<sup>2</sup>)

**210 m<sup>2</sup> Ofis**

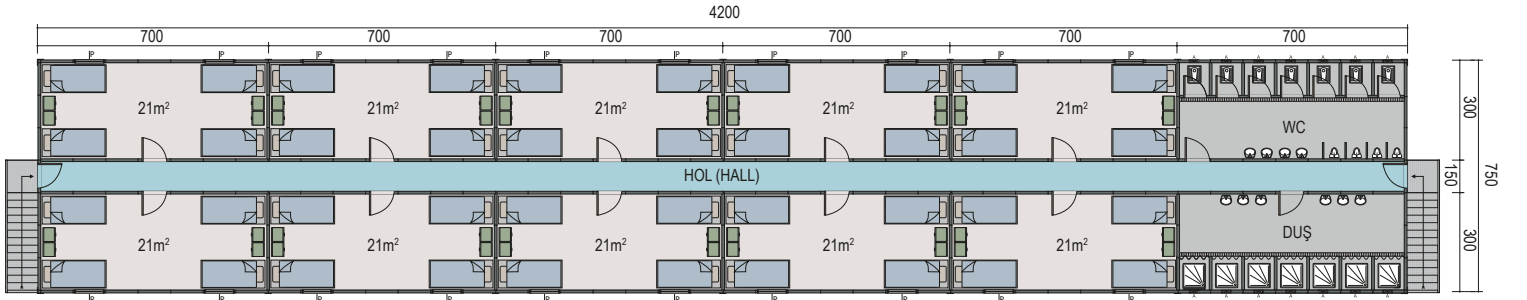


■ Üst Kat Planı - First Floor (180m<sup>2</sup>)

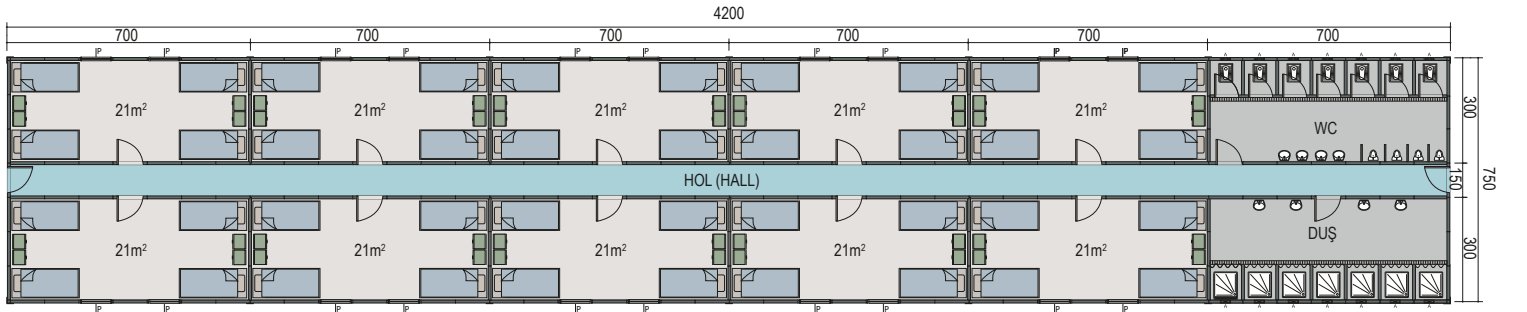


360 m<sup>2</sup> Grup Yatakhane

■ Zemin kat - Ground Floor (180m<sup>2</sup>)

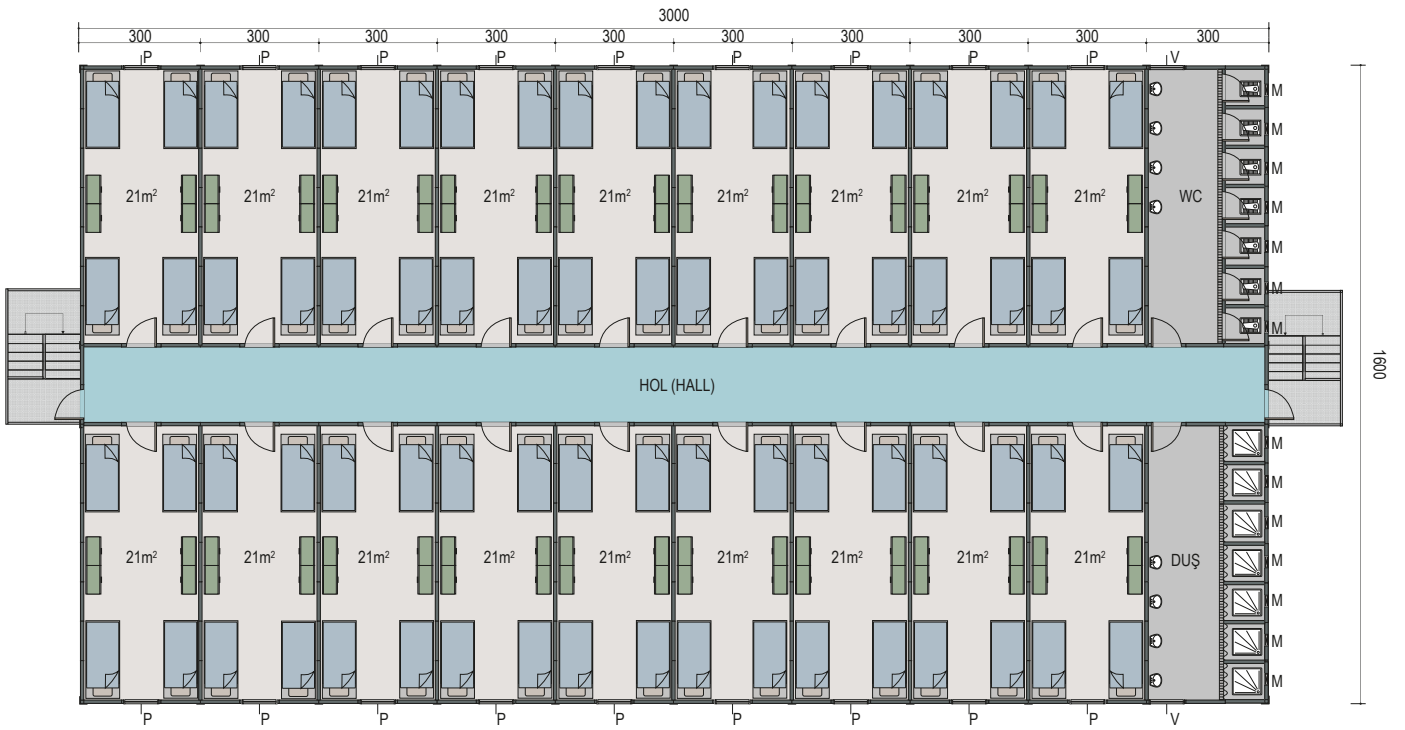


■ Üst Kat Planı - First Floor (315m<sup>2</sup>)



■ Zemin kat - Ground Floor (315m<sup>2</sup>)

630m<sup>2</sup> Grup Yatakhane



1. 2. ve 3.kat - 1. 2. ve 3. Floor (3x480m<sup>2</sup>)

1440m<sup>2</sup> Grup Yatakhane

## DEMONTAJ KONTAYNERLER/DEMONTABLE CONTAINER

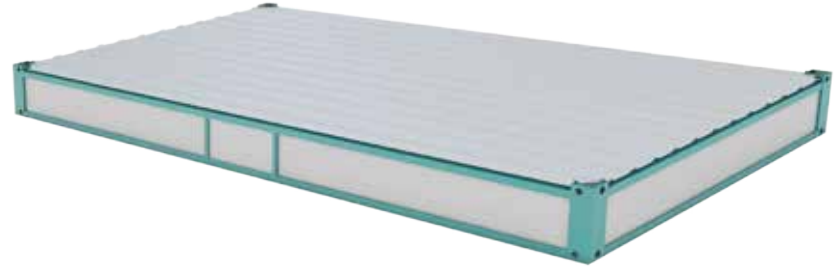




Demonte Konteyner  
Demountable Container

**3m x 7m, 2.4m x 6m ve İsteğe Bağlı Ölçüler**  
3m x 7m, 2.4m x 6m and Optional Sizes

**Hızlı Kurulum**  
Quick Assembly



Demonte Konteyner Paket  
Demountable Container Package



**Tek Seferde**  
**8 Konteyner Taşıma**  
8 containers at one time  
can be transported









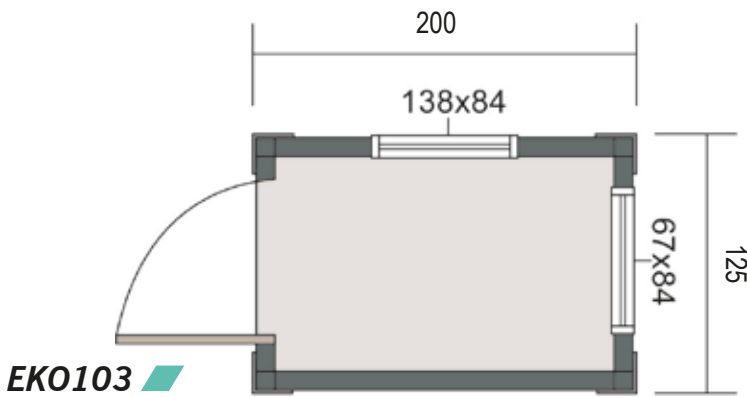
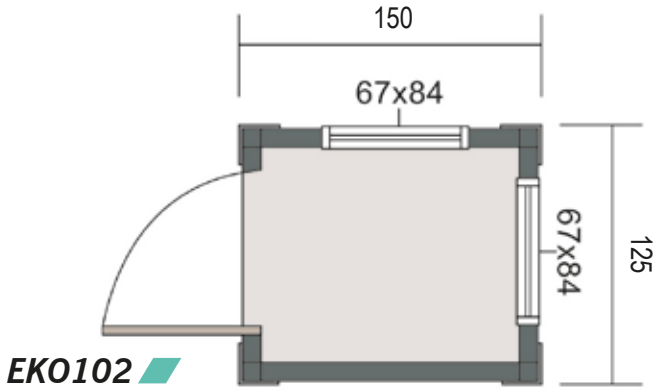
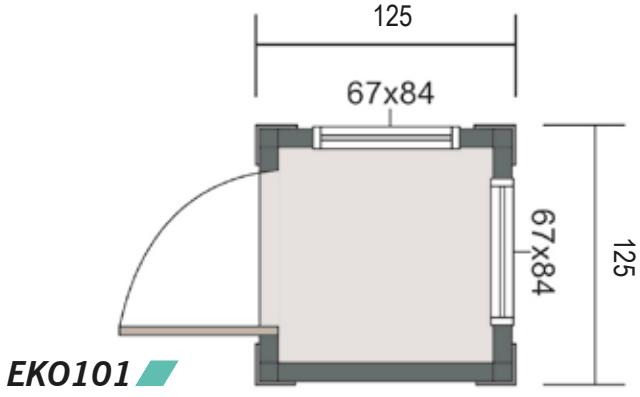
## KABİNLER / CABINS





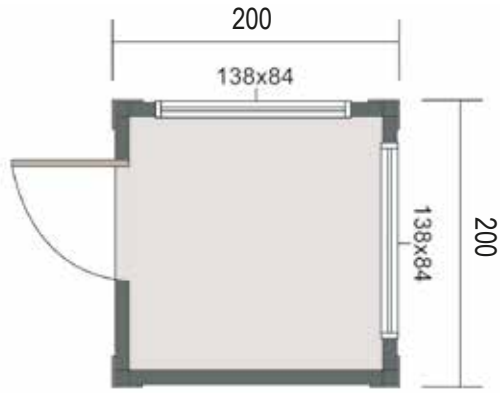
GÜVENLİK KABİN PLANLARI

SECURITY CABINS PLANS

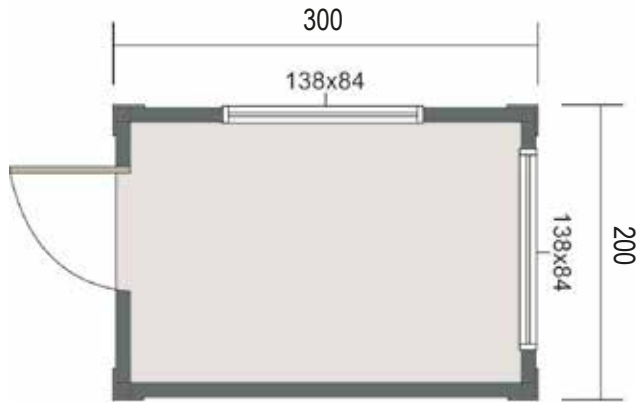


## GÜVENLİK KABİN PLANLARI

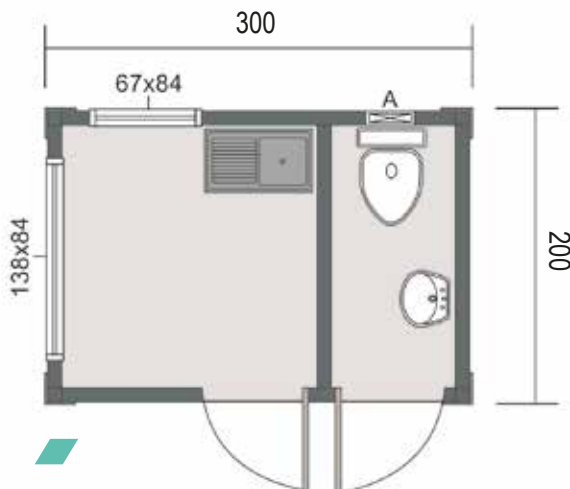
## SECURITY CABINET PLANS



**EKO104**



**EKO105**



**EKO106**

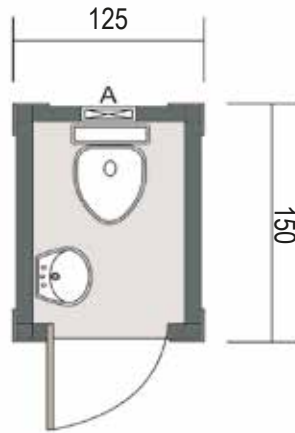




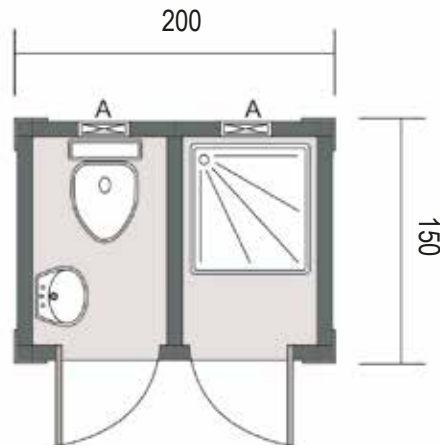
WC DUŞ KABİN PLANLARI

WC SHOWER CABINET PLANS

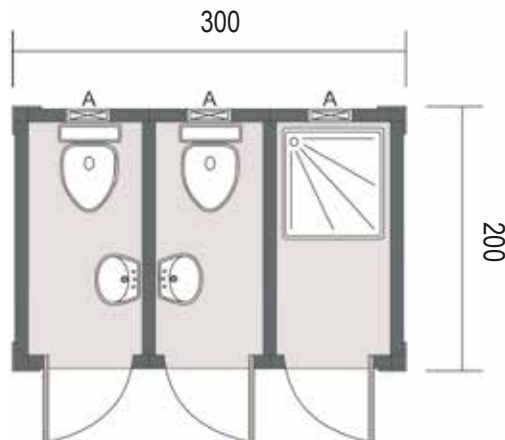
EKOW101



EKOW102



EKOW103

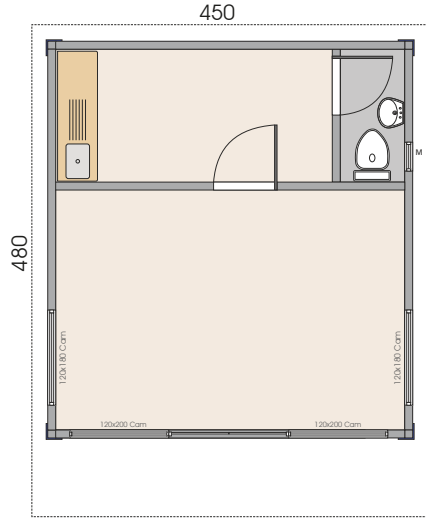


## METROPOL KONTEYNER / COMMERCIAL PRODUCTS

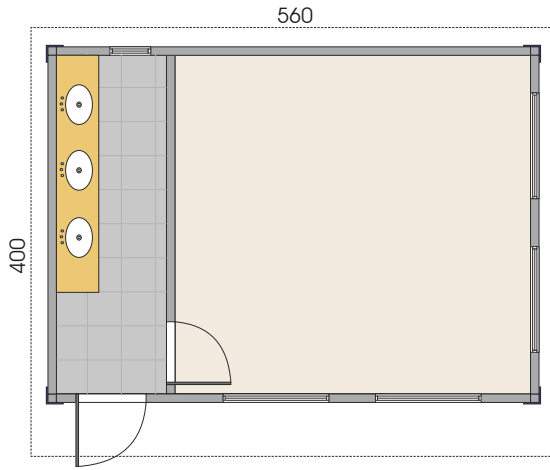




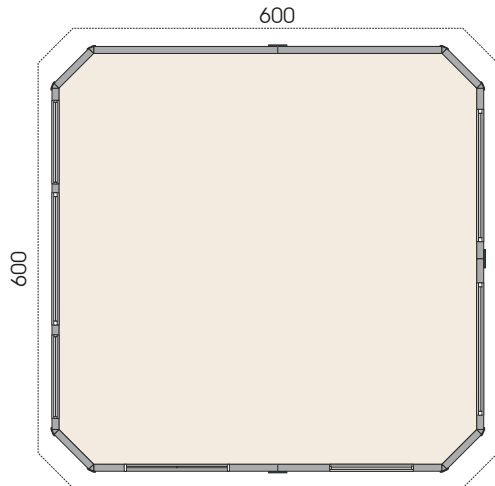
**ÇAO-1** 21,6 m<sup>2</sup>



**ÇAO-2** 22,4 m<sup>2</sup>



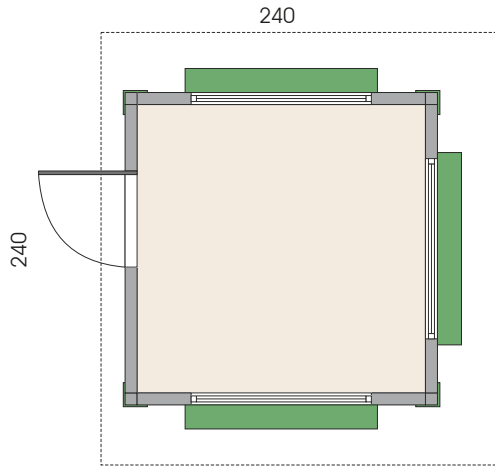
**ÇAO-3** 36 m<sup>2</sup>



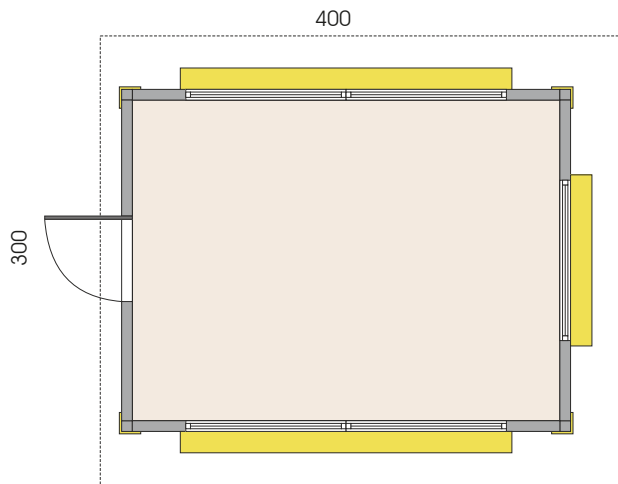




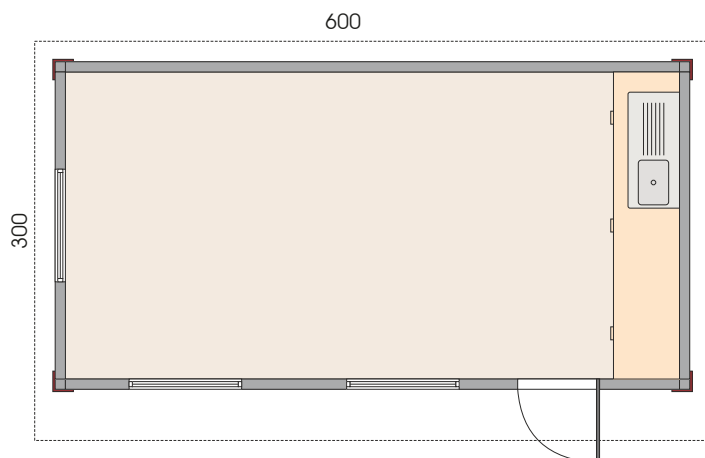
**GK-3** 5.75 m<sup>2</sup>



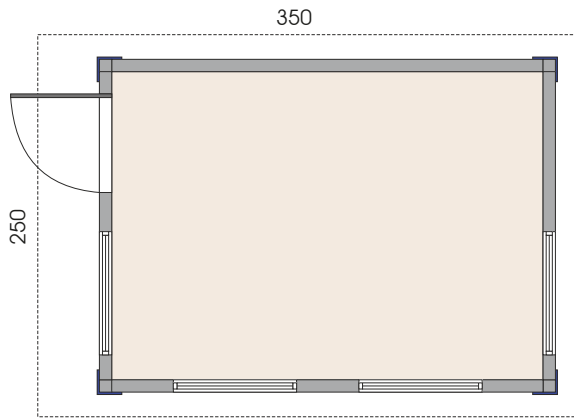
**GK-4** 12 m<sup>2</sup>



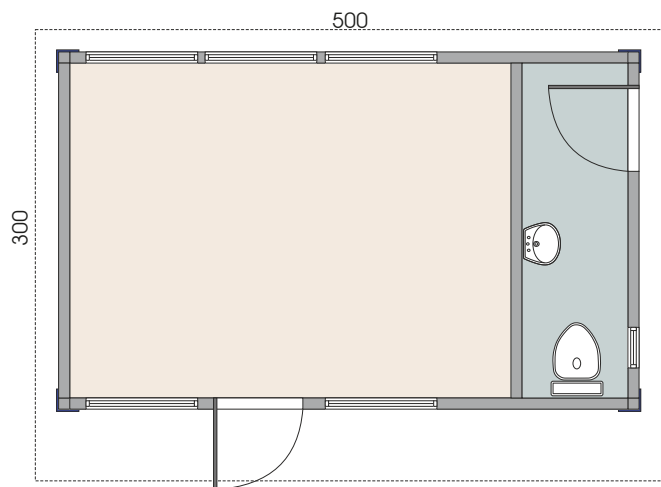
**GK-5** 18 m<sup>2</sup>



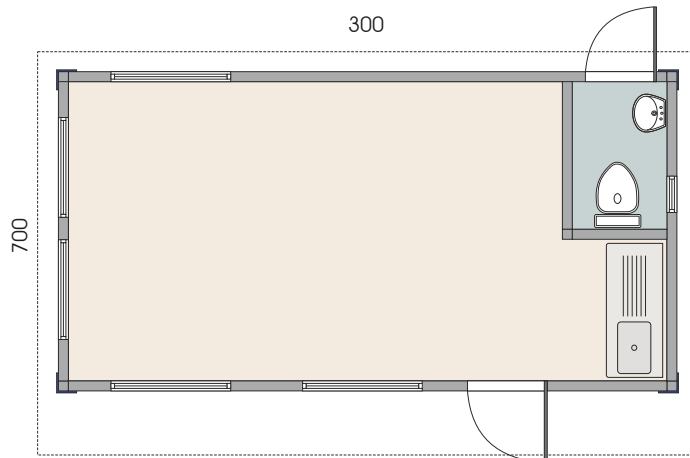
**TD-1** 8,75 m<sup>2</sup>



**TD-3** 15 m<sup>2</sup>

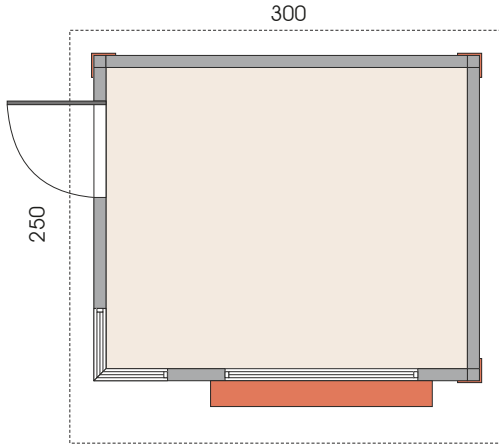


**TD-5** 21 m<sup>2</sup>

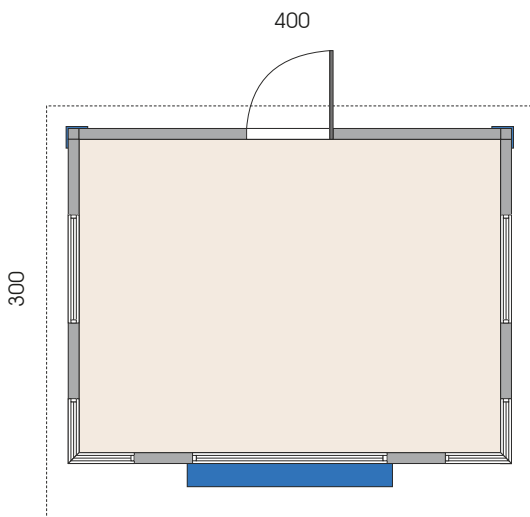




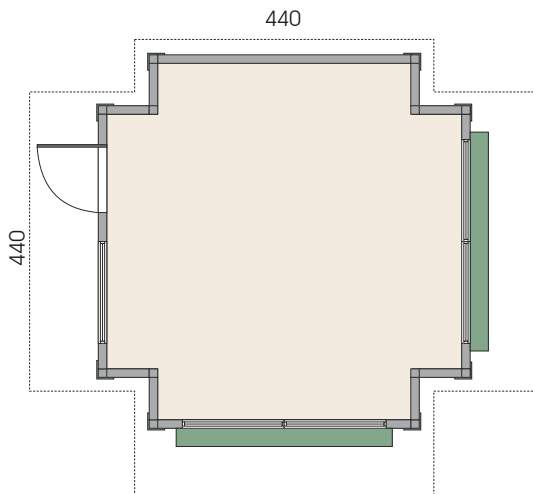
**SB-1** 7,5 m<sup>2</sup>



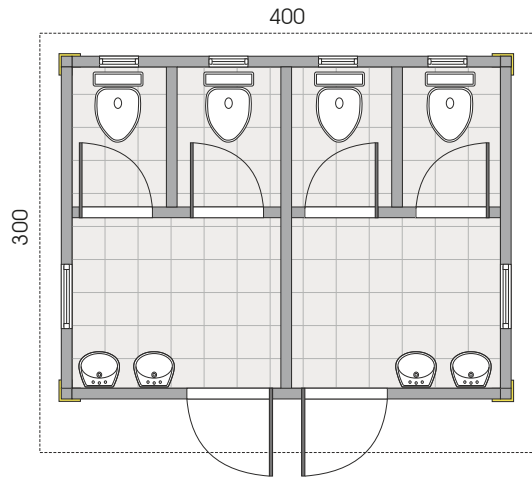
**SB-2** 12 m<sup>2</sup>



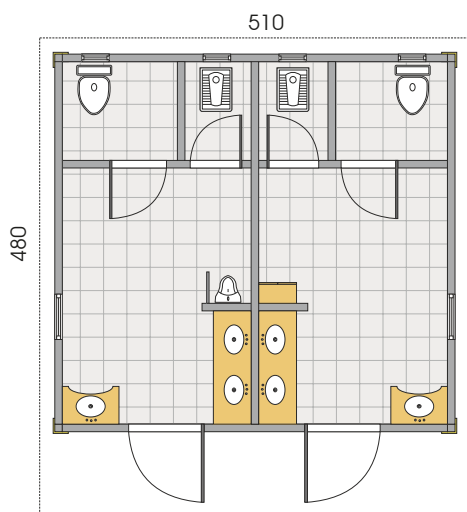
**SB-3** 19 m<sup>2</sup>



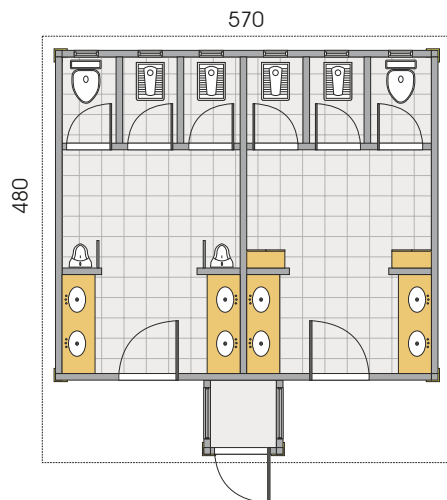
**WC-1** 12 m<sup>2</sup>



**WC-2** 24,5 m<sup>2</sup>



**WC-3** 29 m<sup>2</sup>

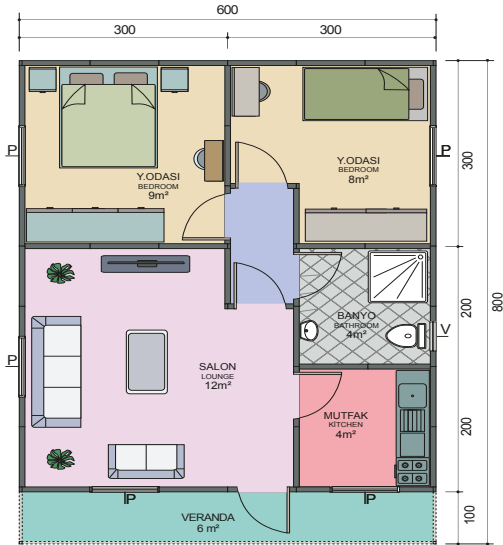




<p><b>EBATLAR</b> DIMENSIONS</p>	<p>İsteğe Bağlı Özel Üretim Yapılır. Birleşimli ve Çok Katlı Konteynerler Üretimi Yapılır. Tailor made production is available. Combination and multistorey containers can also be manufactured.</p>	<p><b>STANDARTLAR</b> STANDARDS</p>	<p>Çelik Malzeme Steel St 37 Betopan TSE 634-2 Cam Yünü Glasswool TS 901 Polistren Köpük Polystrene TS 7316</p>
<p><b>LÜKS KABİN</b> <b>DIŞ DUVARI</b> POSTS-FLOOR</p>	<p>Dış Yüzey Kaplama</p>	<p>12 mm Kalınlığında Çimentolu Yonga Levha (Ahşap Desenli Betopan)</p>	
	<p>Dış Duvar İzolasyonu Galvanised Construction</p>	<p>40 mm Kalınlığında polistiren köpük kullanılır. 2 mm thickness specially formed omegas and profiles from steel are used.</p>	
	<p>İç Kaplama Floor Covering</p>	<p>8 mm Kalınlığında Çimentolu Yonga Levha (Betopan) 16 mm thickness cemented board and over pvc mineflo are laid.</p>	
<p><b>İÇ DUVAR</b> INTERIOR WALL</p>	<p>İç Yüzey Surface</p>	<p>İç yüzeyde 2 mm hadve derinliğinde 0,50mm kalınlığında COİL COATING boyalı galvaniz sac kullanılır. Lux cabin:8mm cement board/ Security cabin: 0,50mm painted steel sheet.</p>	
	<p>İç Duvar İzolasyonu Insulation</p>	<p>40 mm Kalınlığında polistiren köpük kullanılır. 40 mm thickness polystrene.</p>	
	<p>İç Yüzey Surface</p>	<p>2 mm hadve derinliğinde 0,50mm kalınlığında COİL COATING boyalı galvaniz sac kullanılır. 2 mm cement board/ Security cabin 0,50mm painted steel sheet.</p>	
<p><b>KAPILAR</b> DOORS</p>	<p>Dış Kapılar Exterior Door</p>	<p>90*195 ebatlarında izoleli Sac Kapı 0.50 mm Kalınlığında Ral 9002 boyalı galvaniz sacdan imal edilir. 90*195 in dimension - insulated steel door 0.50 mm thickness Ral 9002 painted galvanized steel sheet.</p>	
	<p>İç Kapılar Interior Door</p>	<p>80*198 ebatında olup, kanatları çift taraflı MDF kapıdır. Kapı kasası özel form verilmiş, COİL COATING boyalı galvaniz sac kullanılır. 80*198 in dimension - two sides covered with MDF Frame is COILCOATING painted galvanized steel sheet.</p>	
<p><b>PENCERELER</b> WINDOWS</p>	<p>Pencereler Windows</p>	<p>95 / 100 Ölçülerinde PVC Pencere PAKPEN Marka. 95/100 in dimension PVC PAKPEN- Brand.</p>	
	<p>Pencere Karkası Window Frame</p>	<p>0.60 mm kalınlığında COİL COATING boyalı galvaniz trapez sac kullanılır. 0,60 mm thickness naturel galvanized steel sheet.</p>	
<p><b>CAM</b> GLASS</p>	<p>Çift Cam Double Glass</p>	<p>4+12+4 mm kalınlığında kullanılır. 4+12+4mm</p>	

## PAKET EVLER / CONTAINER HOUSES

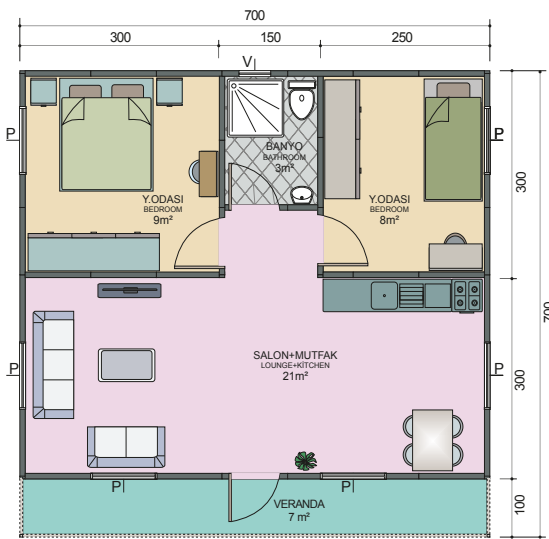




VKP1



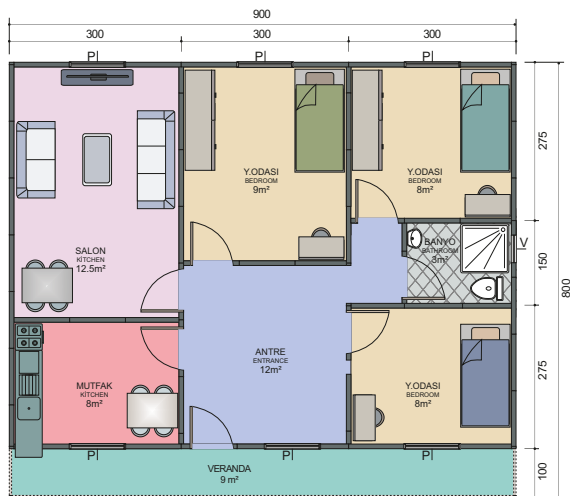
42 m<sup>2</sup>



VKP2



49 m<sup>2</sup>



VKP3



72 m<sup>2</sup>

## RÖMÖRKLÜ KONTEYNERLER / CONTAINER WITH TRAILER







