



Şantiye Katalođu  
Site Catalogue





**vILLA**  
PREFABRIK

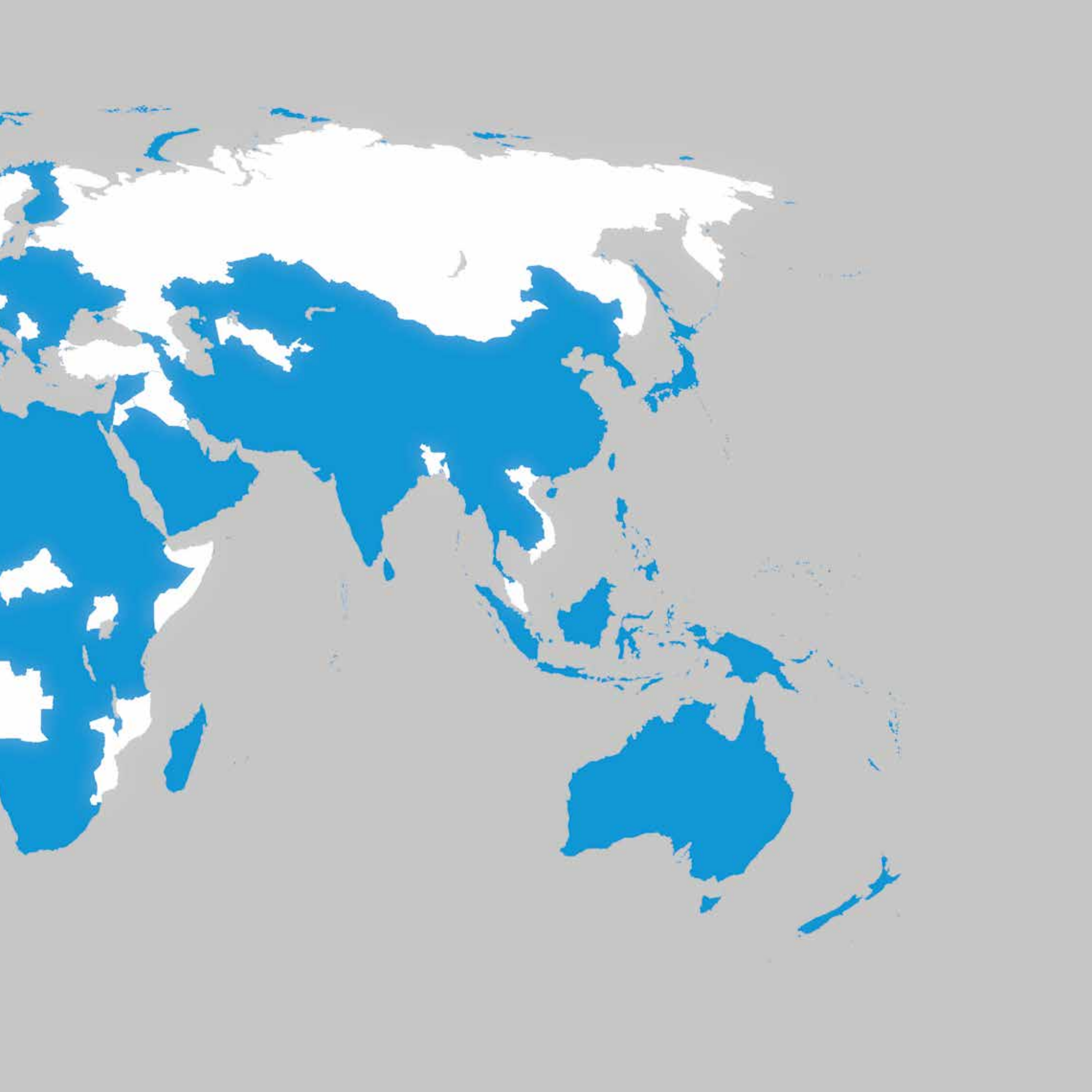



25 Ülke

158 Şantiye

ile Villa Yapı 4 kıtada

Villa Yapı is on 4 continents with 25 country and 158 building site





Villa Yapı; prefabrike konutlar, ofis binaları, sosyal tesisler, deprem evleri ve hafif çelik yapılar ile zamanla üretim ağını genişleterek, çelik konstrüksiyon yapılar ve konteyner imalatıyla birlikte sektörün lider firmaları arasına girmeyi başarmıştır.

Villa Yapı has managed to become one of the industry's leading companies by expanding its manufacturing prefabricated houses, office buildings, recreational facilities, earthquake houses, containers and light steel structure buildings.



1999 yılında üç girişimcinin büyük hedeflerle yola çıkarak kurduğu Villa Yapı; üretimine ilk olarak prefabrik konutlar, ofis binaları, sosyal tesisler, deprem evleri ve hafif çelik yapılar ile başlamıştır. Sürekli büyümeyi kendine hedef olarak belirleyen Villa Yapı, zamanla üretim ağını genişleterek, çelik konstrüksiyon yapılar ve konteyner imalatıyla birlikte sektörün lider firmaları arasına girmeyi başarmıştır.

Firmamız; Prefabrik konutlar, şantiye binaları, sosyal tesisler, hastaneler, okullar, ofis ve yaşam konteynerleri, çelik konstrüksiyon yapılar üretmektedir. Yurtiçi ve yurtdışında müşterilerine, 16 yılı aşkın süredir başarıyla hizmet vermektedir. Müşteri memnuniyetini esas alarak çalışan teknik ve idari personel, müşteri ihtiyaçları doğrultusunda hızlı ve kaliteli çözümler sunmaktadır.

Villa Yapı, İstanbul Tuzla'daki 1500 m<sup>2</sup> showroomu ve Kocaeli Gebze'deki 20.000 m<sup>2</sup> fabrikasında 300'ü aşkın çalışanıyla ülke ekonomisine ve istihdamına katkı sağlamaktadır.

In 1999 three young businessman established Villa Yapı with a grand vision and a goal to build quality prefabric houses, office buildings, social and community facilities, earth quake houses and light steel structures. The continous growth enabled Villa Yapı to expand their core business in to steel construction and Container production to be one of the leaders in the industry.

Our company; Various sizes of prefabricated homes, work site buildings, social and community facilities, hospitals, Schools, Office and living containers, steel structures are build for domestic and International customers, successfully, for the past 16 years. Customer satisfaction being the main goal, technical and administrative staff can offer fast and quality solutions to customers projects.

With Tuzla-Istanbul 1500 m<sup>2</sup> showroom Gebze-Kocaeli 20.000 m<sup>2</sup> manufacturing facility with over 300 qualified associates Villa yapı is proud to contribute to Turkish economy.





## Vizyonumuz;

Türkiye'nin prefabrik algısını değiştirecek kaliteli üretim anlayışını sürdürmek.

## Our Vision;

Is to continue with high level quality manufacturing that may change Turkey's prefabricated house perception.

## Hedeflerimiz;

Ürünlerimizi müsterilerimiz için maksimum fayda sağlayacak şekilde tasarlayıp üretmek, müşteri memnuniyetini faaliyetimizin temel taşı olarak kabul ederek satış sonrası hizmetleriyle farklılaşmak, lüks olarak görülen hizmetleri standartlaştırarak müşterilerimize, kaliteli ve güler yüzlü hizmet sunmak, Türkiye ve Dünya'nın farklı bölgelerinde ağır ve sağlam adımlar atarak hedef pazarlara kalite farklılığımızı göstermektir.

## Our Target;

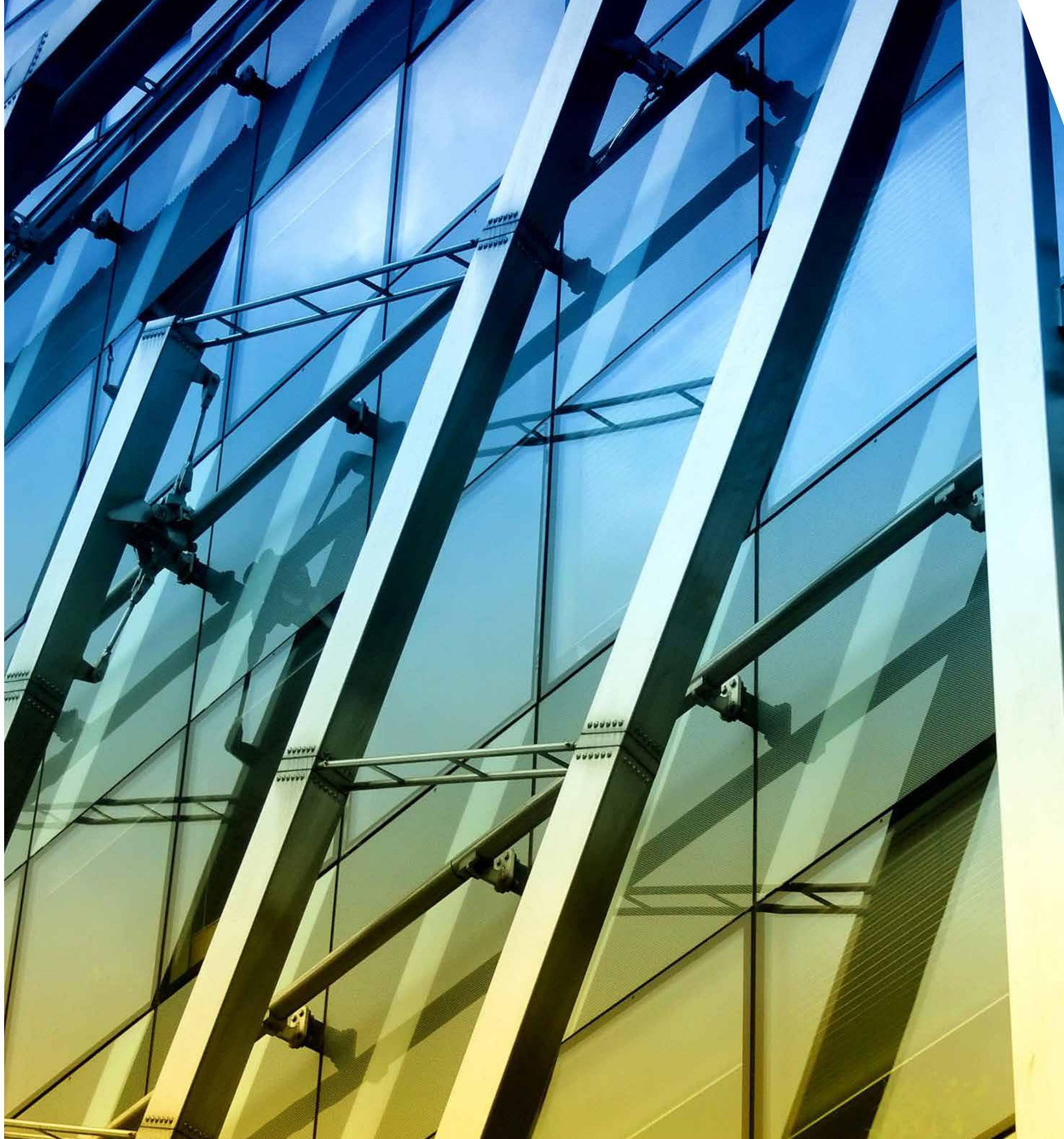
Is to design and manufacture such a way that customer can get maximum usage. Customer satisfaction is our main global by providing them after sale service and quality and show Turkish and World market that we are different then others.

## Kapasite;

Villa Yapı, Kocaeli Gebze'de 10.000m<sup>2</sup> kapalı, 10.000m<sup>2</sup> açık, ön üretimli prefabrik yapılarda 30.000m<sup>2</sup>, depo, hangar yapılarında 10.000m<sup>2</sup>, konteyner üretiminde ise aylık 300 adet kapasitesiyle faaliyetlerini sürdürmektedir.

## Our Capacity;

Having a 10.000 sqm closed and 10.000 sqm open area, our monthly prefabricated building capacity is 30.000 sqm, container capacity is 300 pieces and Steel construction capacity is 10.000 sqm.



# Kalite Belgelerimiz

## Quality Certificates





## Ön Üretimli Prefabrik Yapı Üretim Tesisimiz

20.000 m<sup>2</sup> Alan Gebze/Kocaeli

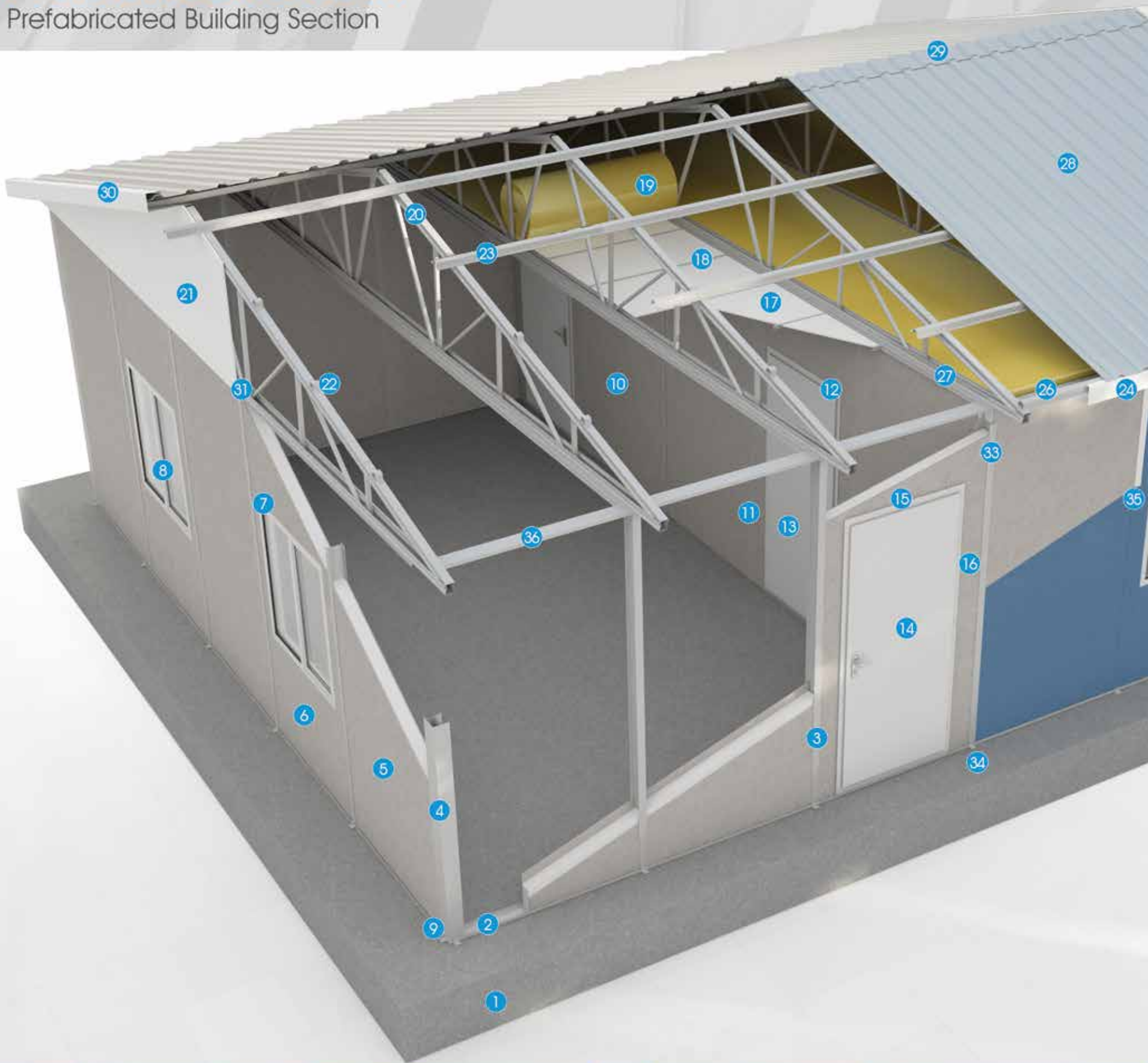
## Prefabricated Building Manufacturing Facilities

20.000 m<sup>2</sup> area Gebze/Kocaeli



# Prefabrik Bina Kesiti

Prefabricated Building Section





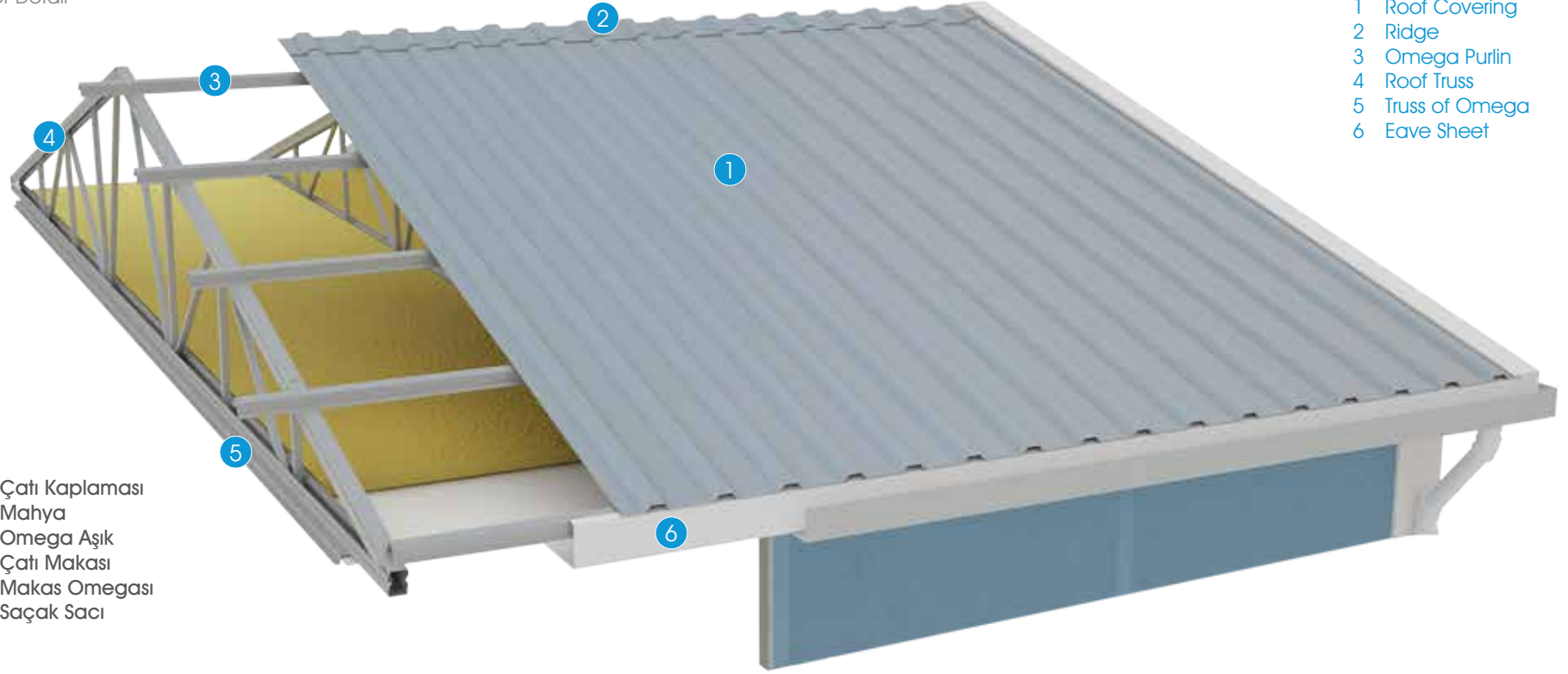
- 1 Zemin Betonu
- 2 Alt Çerçeve
- 3 "H" Direk
- 4 Köşe Direği
- 5 Dış Duvar Panosu
- 6 Pencere Paneli
- 7 Pencere Çerçevesi
- 8 PVC Pencere
- 9 Köşe Direği Kulağı
- 10 İç Duvar Panosu
- 11 İç Kapı Panosu
- 12 İç Kapı Kasası
- 13 İç Kapı / MDF Lam
- 14 Dış Kapı
- 15 Dış Kapı Kasası
- 16 Dış Kapı Panosu
- 17 Asma Tavan Alçıpanı
- 18 Tavan Birleştirme "H"si
- 19 Cam Yünü İzolasyonu
- 20 Çelik Makas
- 21 Baş Makas
- 22 Aşık Kulağı
- 23 Omega Aşık
- 24 Saçak Omegası
- 25 PVC Dere
- 26 Omega Aşık
- 27 Makas Omegası
- 28 0,50 mm Galvaniz Sac / Boyalı Galvaniz Sac
- 29 Mahya
- 30 Baş Makas "V"si
- 31 Baş Makas Omegası
- 32 Dere İnşi
- 33 Üçlü "H"
- 34 "H" Kulağı
- 35 PVC "H" Kapağı
- 36 Saçak Sacı

- 1 Ground Concrete
- 2 Bottom Frame
- 3 "H" Post
- 4 Corner Post
- 5 External Wall Panel
- 6 Panel with window
- 7 Window frame
- 8 PVC Window
- 9 Ear of Corner post
- 10 Internal Wall Panel
- 11 Interior Door Panel
- 12 Interior Door Frame
- 13 Interior Door / MDF LAM
- 14 Exterior Door
- 15 Exterior Door Frame
- 16 External Wall Panel
- 17 Suspended ceiling gypsumboard
- 18 "H" joint profile for ceiling
- 19 Glass wool insulation
- 20 Steel truss
- 21 Head truss
- 22 Ear of Purlin
- 23 Omega Purlin
- 24 Eave Omega Profile
- 25 PVC Gutter
- 26 Omega Purlin
- 27 Truss Omega Profile
- 28 0,50 mm Galvanized Sheet / Painted Galvanized Sheet
- 29 Ridge
- 30 "V" profile for Head Truss
- 31 Head Truss omega profile
- 32 Gutter landing
- 33 Triple "H" Profile
- 34 Ear Of "H" Profile
- 35 PVC "H" Cover
- 36 Eave sheet

# Prefabrike Yapı Duvar ve Çatı Detayları

Prefabricated Structure Wall and Roof Details

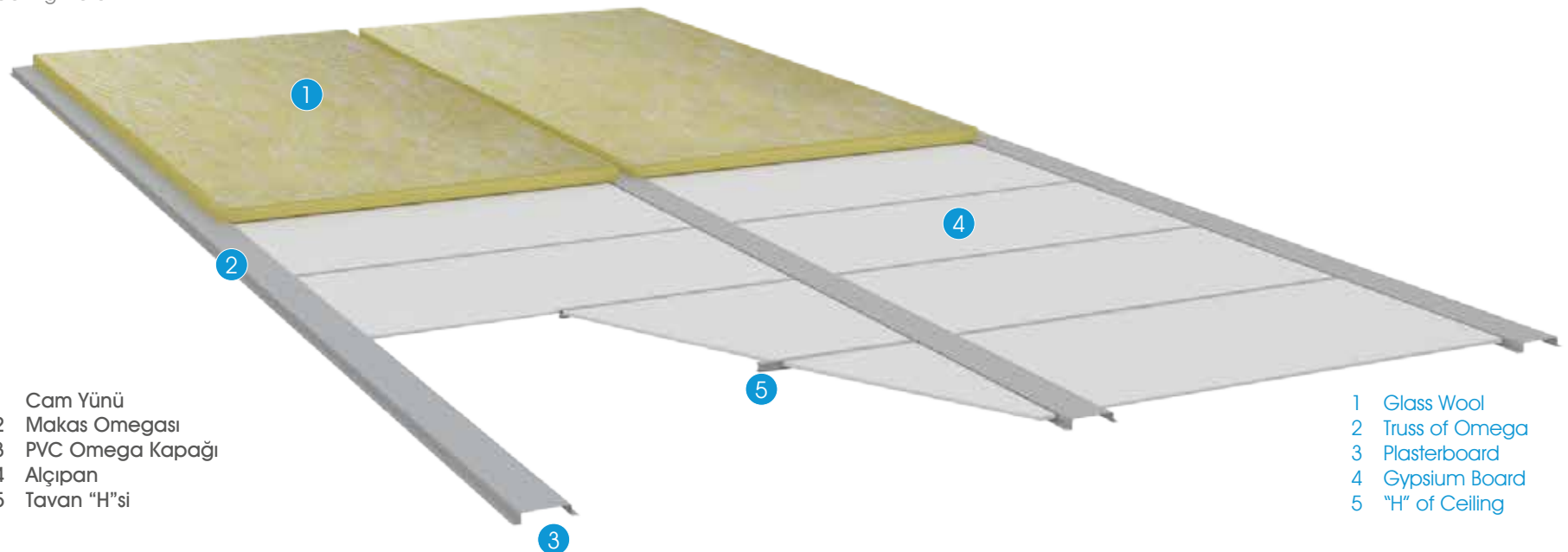
Çatı Detayı  
Roof Detail



- 1 Roof Covering
- 2 Ridge
- 3 Omega Purlin
- 4 Roof Truss
- 5 Truss of Omega
- 6 Eave Sheet

- 1 Çatı Kaplaması
- 2 Mahya
- 3 Omega Aşık
- 4 Çatı Makası
- 5 Makas Omegası
- 6 Saçak Sacı

Tavan Detayı  
Ceiling Detail

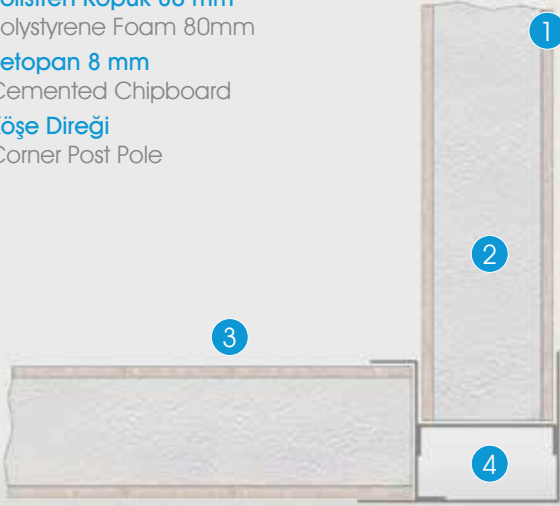


- 1 Glass Wool
- 2 Truss of Omega
- 3 Plasterboard
- 4 Gypsum Board
- 5 "H" of Ceiling

- 1 Cam Yünü
- 2 Makas Omegası
- 3 PVC Omega Kapağı
- 4 Alçıpan
- 5 Tavan "H"si

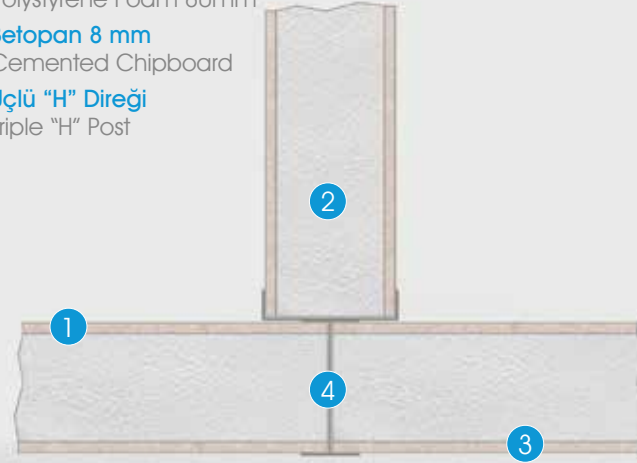


- 1 **Betopan 8 mm**  
Cemented Chipboard
- 2 **Polistren Köpük 80 mm**  
Polystyrene Foam 80mm
- 3 **Betopan 8 mm**  
Cemented Chipboard
- 4 **Köşe Direği**  
Corner Post Pole



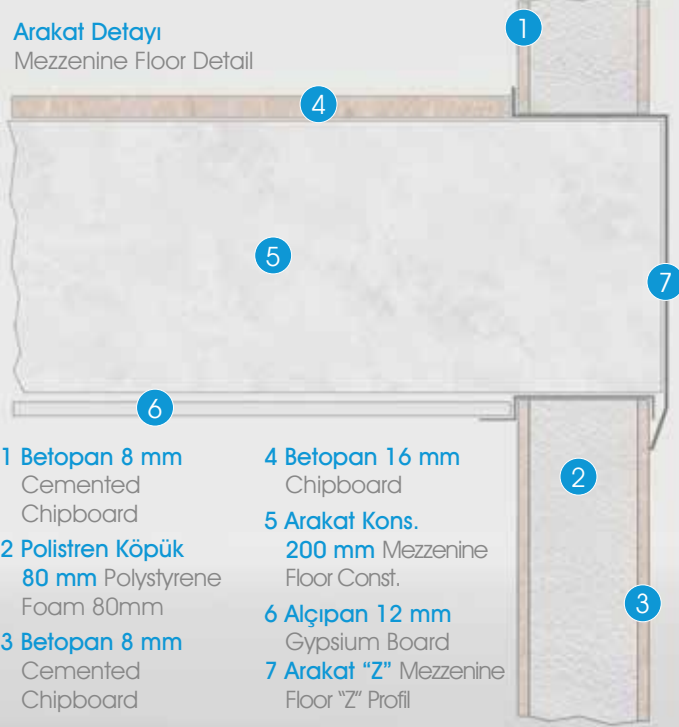
**Köşe Birleşim Detayı**  
Corner Junction Detail

- 1 **Betopan 8 mm**  
Cemented Chipboard
- 2 **Polistren Köpük 80 mm**  
Polystyrene Foam 80mm
- 3 **Betopan 8 mm**  
Cemented Chipboard
- 4 **Üçlü "H" Direği**  
Triple "H" Post



**Duvar Bölme Detayı**  
Wall Division Detail

**Arakat Detayı**  
Mezzanine Floor Detail



- 1 **Betopan 8 mm**  
Cemented Chipboard
- 2 **Polistren Köpük 80 mm**  
Polystyrene Foam 80mm
- 3 **Betopan 8 mm**  
Cemented Chipboard
- 4 **Betopan 16 mm**  
Chipboard
- 5 **Arakat Kons.**  
200 mm Mezzanine Floor Const.
- 6 **Alçıpan 12 mm**  
Gypsum Board
- 7 **Arakat "Z" Mezzanine**  
Floor "Z" Profil

- 1 **Betopan 8 mm**  
Cemented Chipboard
- 2 **Polistren Köpük 80 mm**  
Polystyrene Foam 80mm
- 3 **Betopan 8 mm**  
Cemented Chipboard
- 4 **"H" Direği**  
"H" Post

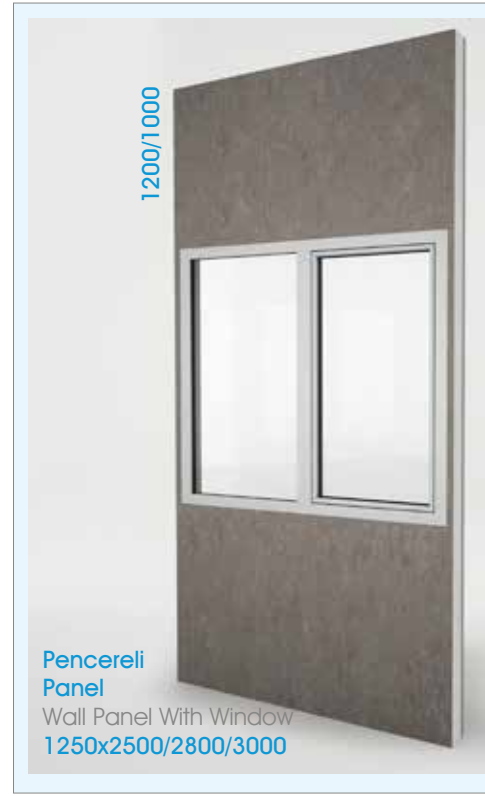


**"H" Birleşim Detayı**  
"H" Junction Detail

# Prefabrik Bina Duvar Paneli 60&100mm

Prefabricated Wall Building Panel







# Geleceğimiz için; estetik ve çevre dostu yapılar üretiyoruz.

We manufacture esthetic and eco-friendly buildings for our future





# Projelerimiz

Our Projects



# Projelerimiz

Our Projects

## Yenişehir Gayrimenkul / Konya

Yenişehir Gayrimenkul / Konya





## Dağ Mühendislik / Konya

Dağ Mühendislik / Konya







# Projelerimiz

Our Projects

## Çağdaş Kent / Kocaeli

Çağdaş Kent / Kocaeli



## Haruniye Kaplıcaları / Osmaniye

Haruniye Thermal Spring Facilities / Osmaniye



# Projelerimiz

Our Projects

## Aşçıođlu İnşaat Ofis Binası / İstanbul

Aşçıođlu Construction Office Building / İstanbul



## Maltepe Belediyesi Park ve Bahçeler Müdürlüğü / İstanbul

Maltepe Municipality Parks and Garden Management / İstanbul



## DMS Metal / Dilovası

DMS Metal Office Building / Dilovası



## Akas Tarım / Afyon

Akas Tarım / Afyon









# Projelerimiz

Our Projects

## Eren Enerji Şantiye Binaları / Zonguldak

Eren Energy Construction Site Buildings / Zonguldak



## Özmetal Ofis Binası / İstanbul

Özmetal Office Building / İstanbul



## Set Lojistik / Gebze

Set Logistic / Gebze



# Projelerimiz

Our Projects

## Dost İnşaat / Isparta

Dost Construction / Isparta



## Vadi İstanbul / İstanbul

Vadi İstanbul / İstanbul



# Projelerimiz

Our Projects

## Sabiha Gökçen Havaalanı Köpek Barınağı / İstanbul

Sabiha Gokcen Airport Dog Shelter / İstanbul



## Taisei Corporation Marmaray Ek Hizmet Binası / İstanbul

Taisei Corporation Marmaray Additional Service Building / İstanbul



## İz Gaz Ofis Binası / Kocaeli

İz Gaz Office Building / Kocaeli



## Ofis Binası / Uşak

Office Building / Uşak









# Projelerimiz

Our Projects

## Türkiye Kömür İşletmeleri Ofis Binası / Zonguldak

Turkey Coal Mining Office Building / Zonguldak



## Makro İnşaat Ofis Binası / İstanbul

Makro Construction Office Building / İstanbul



# Projelerimiz

Our Projects

## Osmaniye Mülteci Kampı / Osmaniye

Osmaniye Refugee Camp / Kocaeli





# Projelerimiz

Our Projects

## Best Makina / İstanbul

Best Makina / İstanbul



## Atek / İzmir

Atek / İzmir



## I.H.I. / Dilovasi

I.H.I. / Dilovasi









# Projelerimiz

Our Projects

## Özderici GYO Yemekhane Binası / İstanbul

Özderici GYO Mess Hall Building / İstanbul



## Özderici GYO Satış Ofisi / İstanbul

Özderici GYO Sales Office Building / İstanbul



## Gürkan Nakliyat Ofis Binası / Kocaeli

Gürkan Transport Office Building / Kocaeli



## Hakan Plastik Ofis Binası / İstanbul

Hakan Plastic Office Building / İstanbul



# Projelerimiz

Our Projects

## Prefabrik Konut / Giresun

Prefabricated House / Giresun



## Eren Enerji / Zonguldak

Eren Energy / Zonguldak



# Projelerimiz

Our Projects

## Güner Metal / Kocaeli

Güner Metal / Kocaeli



## Teknik Yapı - Evora / Tuzla

Teknik Yapı - Evora / Tuzla



# Projelerimiz

Our Projects

## Zonguldak Ro Ro Limanı Ofisler / Zonguldak

Zonguldak Ro Ro Port Offices / Zonguldak



## Nurol İnşaat / İstanbul

Nurol Construction / Kocaeli





## RZK Makina / Dilovası

RZK Makina / Dilovası



## Yol Turizm Terminal Ek Binası / İstanbul

Yol Turizm Terminal Annex Building / İstanbul







WVILLA  
0212 494 49 49

WVILLA  
0212 494 49 49

WKS

WVILLA  
0212 494 49 49

WVILLA  
0212 494 49 49

BAHA SEFI

# Projelerimiz

Our Projects

## Rüya Anaokulu / İstanbul

Rüya Kindergarten / İstanbul



## Atatürk İlköğretim Okulu / İstanbul

Atatürk Primary School / İstanbul



## Cemil Türker İlköğretim Okulu / İstanbul

Cemil Türker Primary School / İstanbul



## Villa Yapı Anasınıfı / Osmaniye

Villa Yapı Kindergarten / Osmaniye



# Projelerimiz

Our Projects

## Gençlik Spor İl Müdürlüğü / Samsun

Provincial Directorate of Youth and Sport / Samsun



## Perfetti Gıda Yemekhane / İstanbul

Perfetti Food Mess Hall / İstanbul



## RZK Makina / Kocaeli

RZK Makina / Kocaeli



# Projelerimiz

Our Projects

## Tema İstanbul Şantiyesi / İstanbul

Tema İstanbul Construction Site / İstanbul







# Projelerimiz

Our Projects

## Onna Yapı (Digiturk) Şantiye Yapıları / İstanbul

Onna Building (Digiturk) Site Structure / İstanbul



## Semay Tarım / Afyon

Semay Tarım / Afyon







# Projelerimiz

Our Projects

## Fi Yapı / GOSB Gebze

Fi Yapı / GOSB Gebze



## Maksem İnşaat Toki Şantiyesi / İstanbul

Maksem Construction Toki Worksite / İstanbul



## Türkiye Hudut ve Sahiller Sağlık Gen. Müd.lüğü / Rumeli Feneri

Genral Directorate of Health Proteciton of Borders and Coast / Rumeli Feneri



# Projelerimiz

Our Projects

## Kızılay Kan Bağış Merkezi / Kadıköy

Kızılay Blood Donation Center / Kadıköy





## Cevizli Hizmet Binası / İstanbul

Cevizli Service Center / İstanbul



# Projelerimiz

Our Projects

## Gedik Üniversitesi Spor Bilimleri Fakültesi / İstanbul

Gedik University Faculty of Sport Sciences / İstanbul



## Şile Belediyesi Sosyal Tesisleri / İstanbul

Şile Municipality Social Facilities / İstanbul





KEMA

Kahve Dükkanı

KURU SABUN İSTASYONU



# Projelerimiz

Our Projects

## Dost İnşaat / Isparta

Dost Construction / Isparta





# Projelerimiz

Our Projects

## Osmanlı Makina / İstanbul

Osmanlı Makina / İstanbul



## Kalyon İnşaat Şantiye

Kalyon Construction Site





## Alemdağ Sağlık Ocağı / İstanbul

Alemdağ Health Center / İstanbul



## Marmara Hastanesi / Marmara Adası

Marmara Hospital / Marmara Island





# Prefabrik Ofis Planları

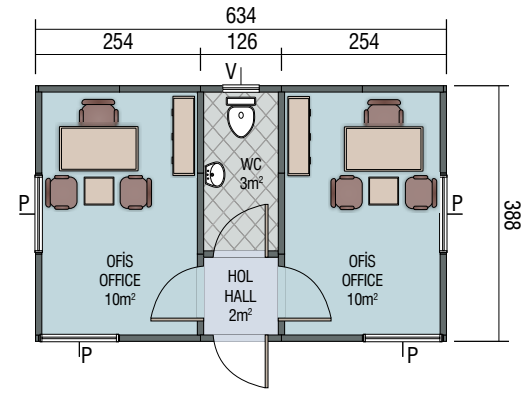
Prefabricated Office Plans



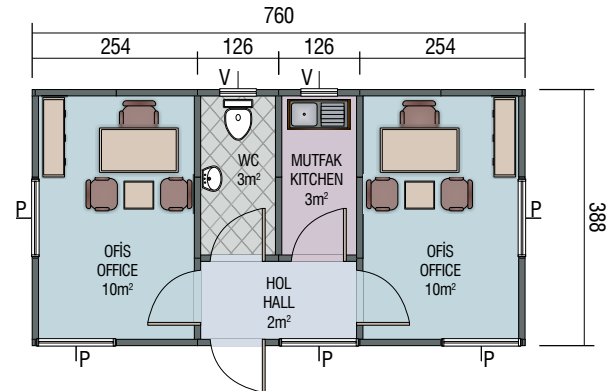
# Prefabrik Ofis Planları

Prefabricated Office Plans

VPO-01 Prefabrik Ofis 25 m<sup>2</sup>  
Prefabricated Office 25 m<sup>2</sup>

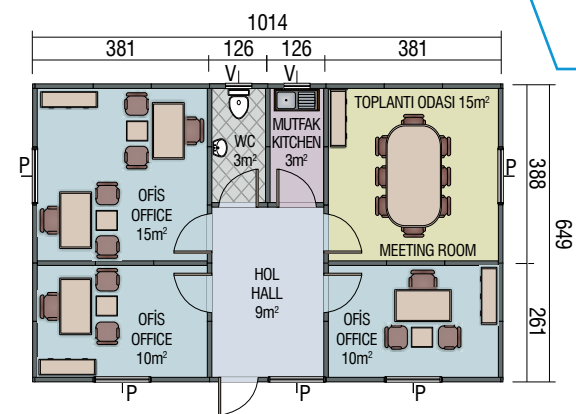


VPO-02 Prefabrik Ofis 30 m<sup>2</sup>  
Prefabricated Office 30 m<sup>2</sup>



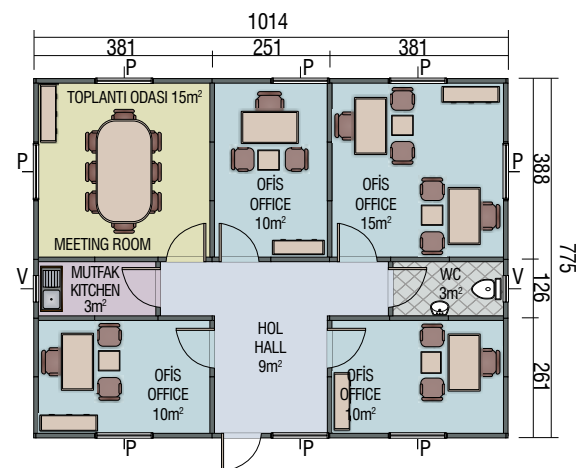
## VPO-03 Prefabrik Ofis 65 m<sup>2</sup>

Prefabricated Office 65 m<sup>2</sup>



## VPO-04 Prefabrik Ofis 79 m<sup>2</sup>

Prefabricated Office 79 m<sup>2</sup>

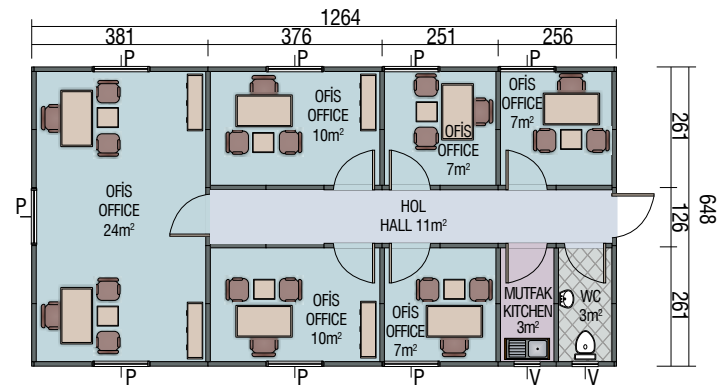


# Prefabrik Ofis Planları

Prefabricated Office Plans

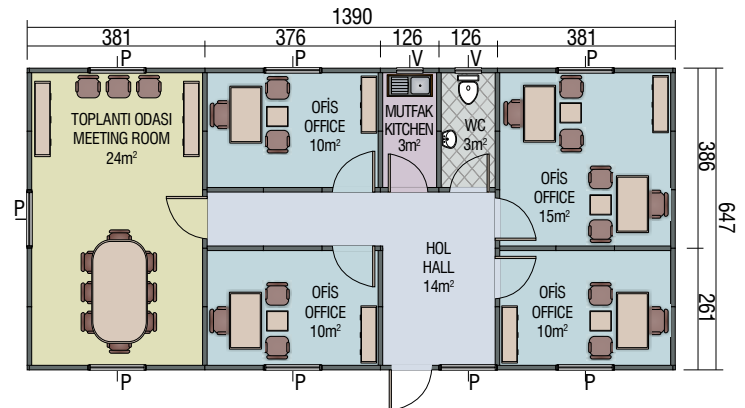
## VPO-05 Prefabrik Ofis 82 m<sup>2</sup>

Prefabricated Office 82 m<sup>2</sup>



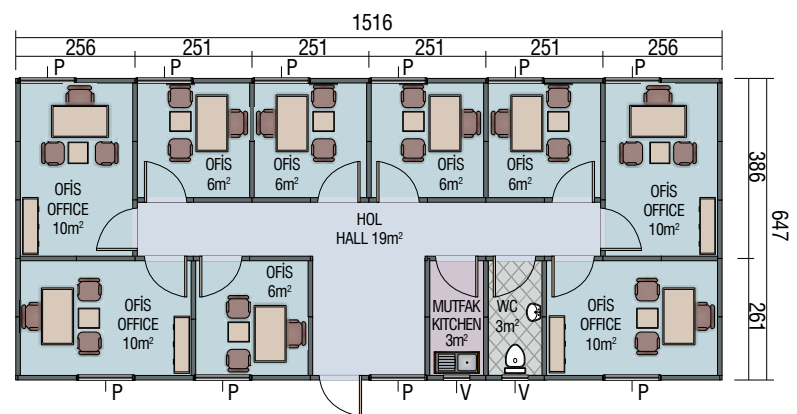
## VPO-06 Prefabrik Ofis 89 m<sup>2</sup>

Prefabricated Office 89 m<sup>2</sup>



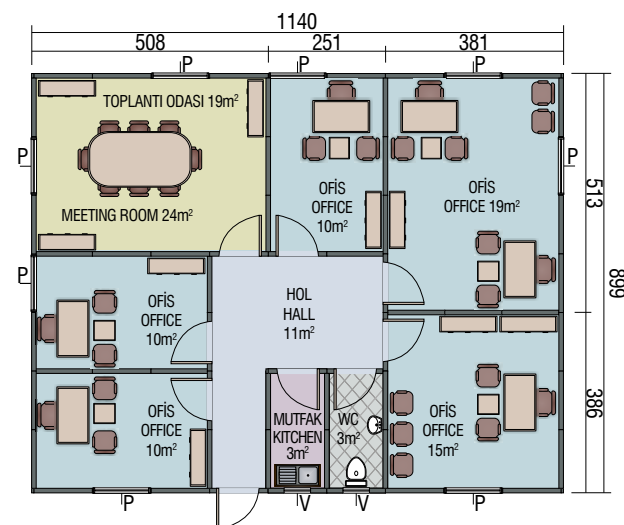
## VPO-07 Prefabrik Ofis 98 m<sup>2</sup>

Prefabricated Office 98 m<sup>2</sup>



## VPO-08 Prefabrik Ofis 102 m<sup>2</sup>

Prefabricated Office 102 m<sup>2</sup>

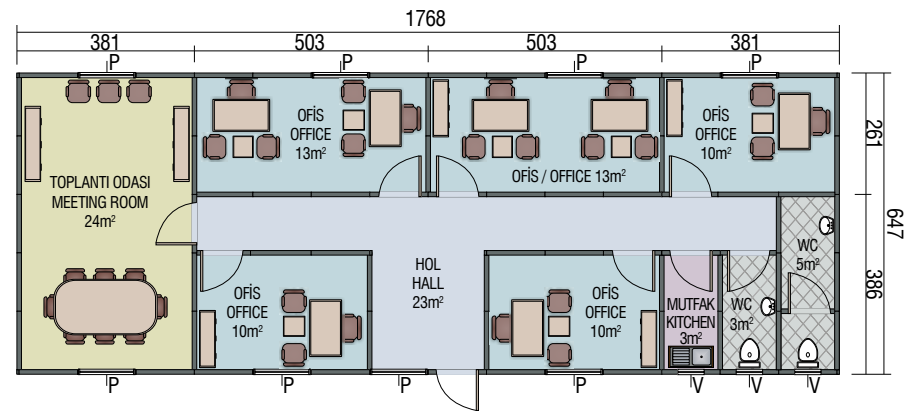


# Prefabrik Ofis Planları

Prefabricated Office Plans

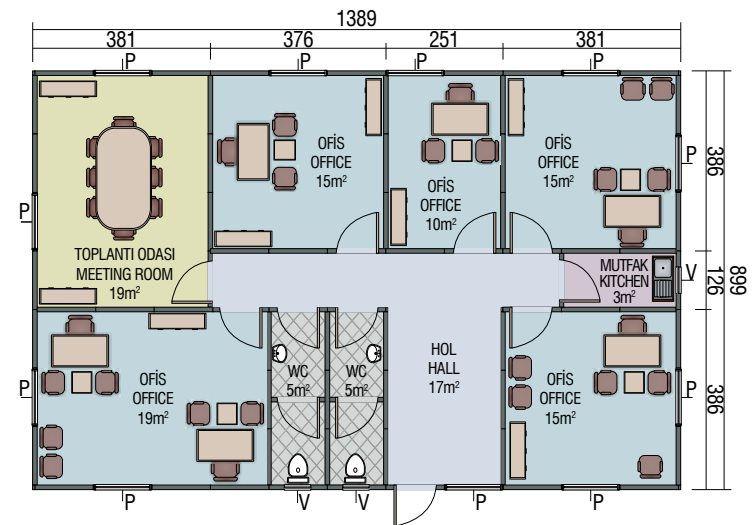
## VPO-09 Prefabrik Ofis 114 m<sup>2</sup>

Prefabricated Office 114 m<sup>2</sup>



## VPO-10 Prefabrik Ofis 125 m<sup>2</sup>

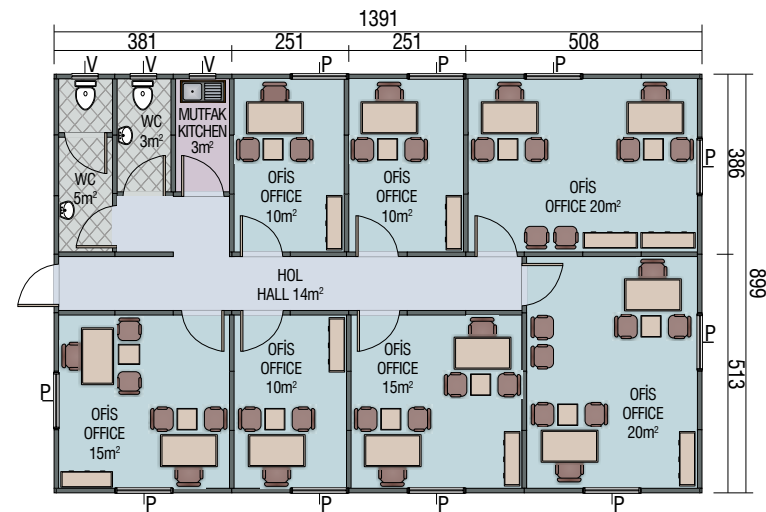
Prefabricated Office 125 m<sup>2</sup>





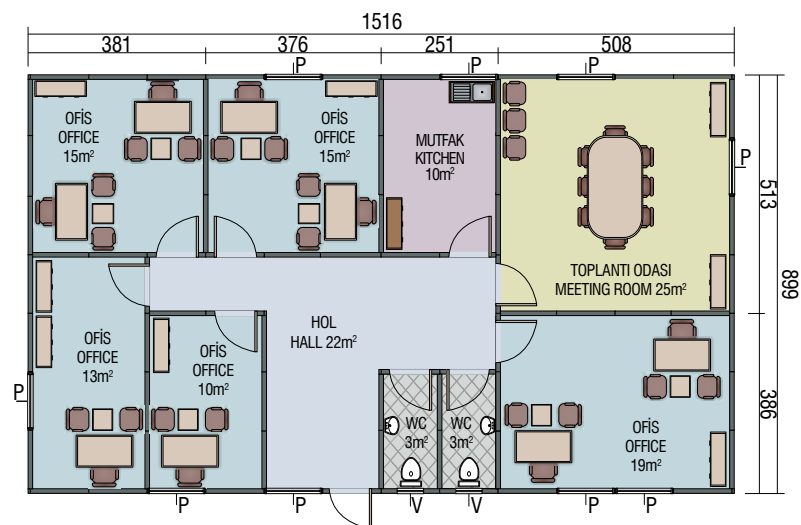
## VPO-11 Prefabrik Ofis 125 m<sup>2</sup>

Prefabricated Office 125 m<sup>2</sup>



## VPO-12 Prefabrik Ofis 136 m<sup>2</sup>

Prefabricated Office 136 m<sup>2</sup>



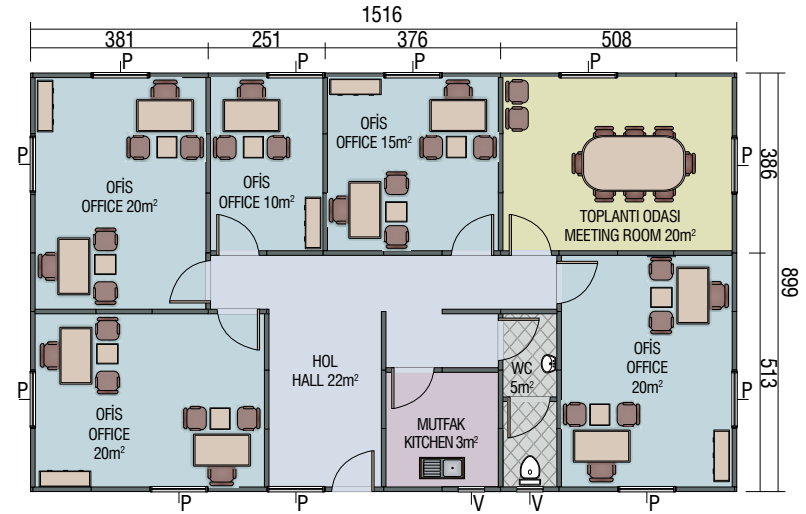




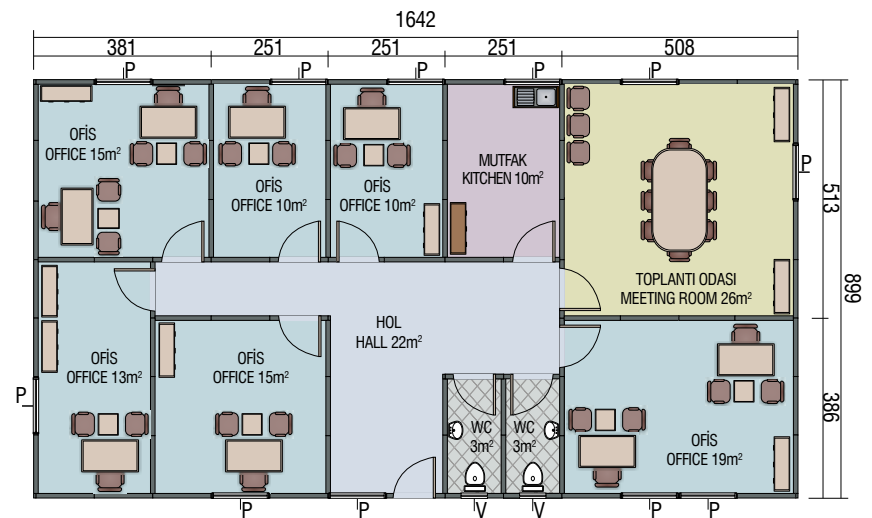
# Prefabrik Ofis Planları

## Prefabricated Office Plans

**VPO-13 Prefabrik Ofis 136 m<sup>2</sup>**  
 Prefabricated Office 136 m<sup>2</sup>

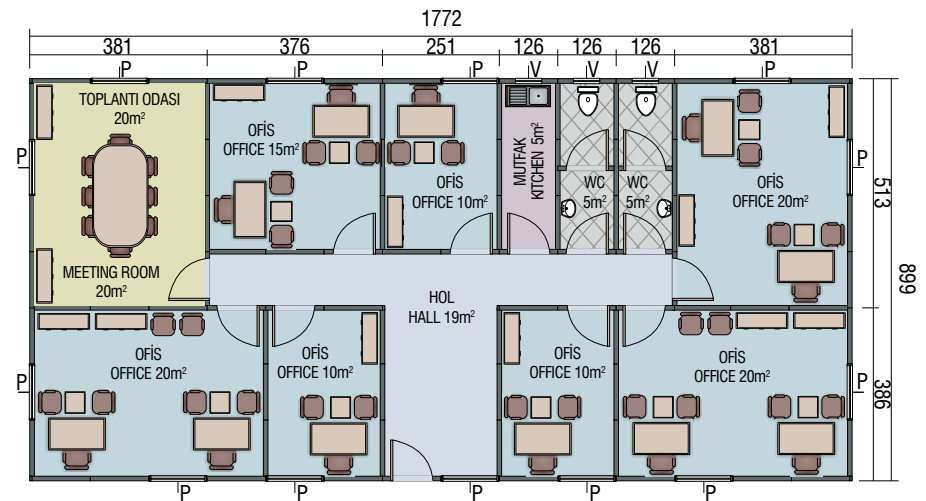


**VPO-14 Prefabrik Ofis 148 m<sup>2</sup>**  
 Prefabricated Office 148 m<sup>2</sup>



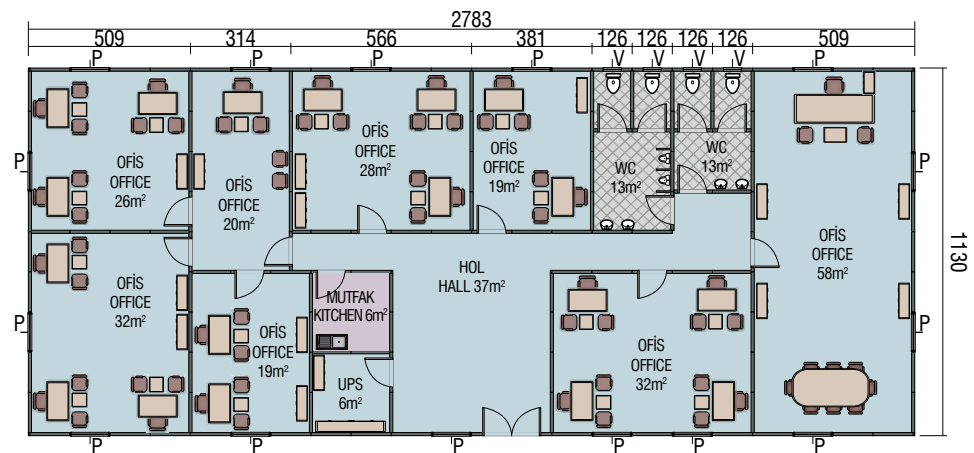
## VPO-15 Prefabrik Ofis 159 m<sup>2</sup>

Prefabricated Office 159 m<sup>2</sup>



## VPO-18 Prefabrik Ofis 315m<sup>2</sup>

Prefabricated Office 315 m<sup>2</sup>

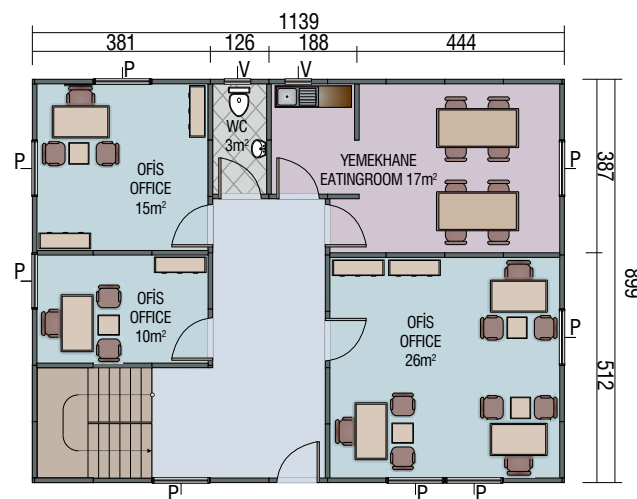


# Prefabrik Ofis Planları

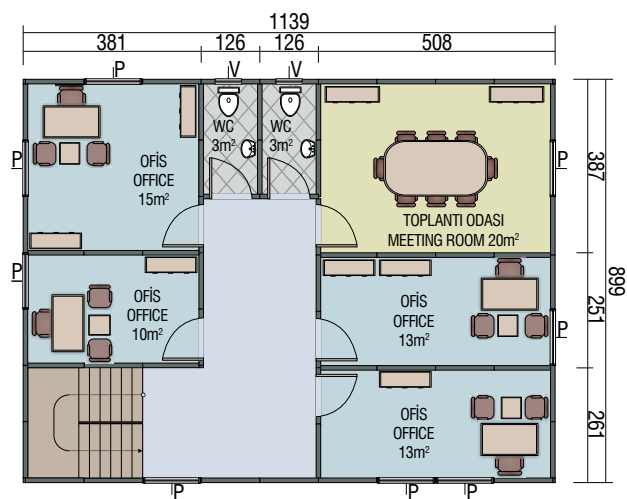
## Prefabricated Office Plans

### VPO-16 Prefabrik Ofis 204 m<sup>2</sup>

Prefabricated Office 204 m<sup>2</sup>



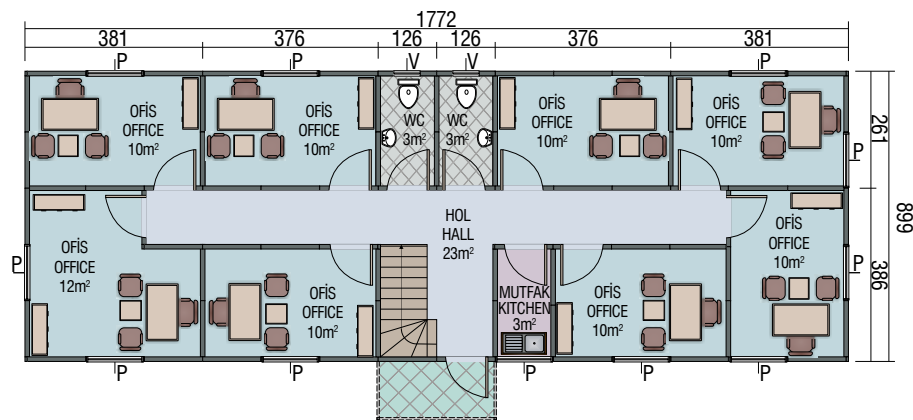
Zemin Kat Planı (102 m<sup>2</sup>)  
Ground Floor



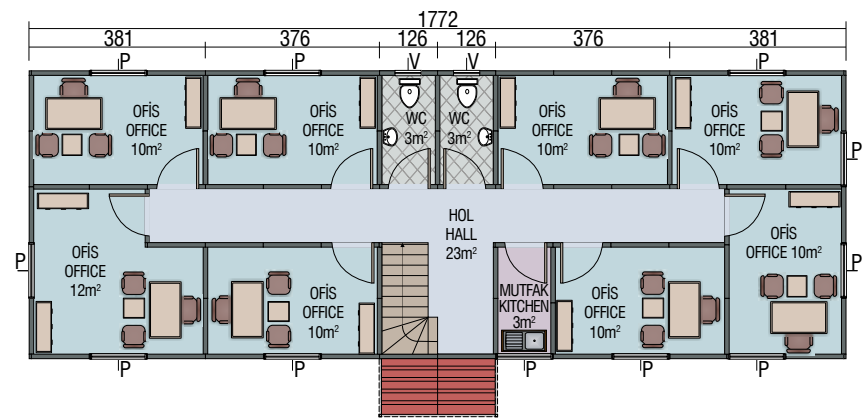
1. Kat Planı (102 m<sup>2</sup>)  
First Floor

## VPO-17 Prefabrik Ofis 318 m<sup>2</sup>

Prefabricated Office 318 m<sup>2</sup>



Zemin Kat Planı (159 m<sup>2</sup>)  
Ground Floor



1. Kat Planı (159 m<sup>2</sup>)  
First Floor

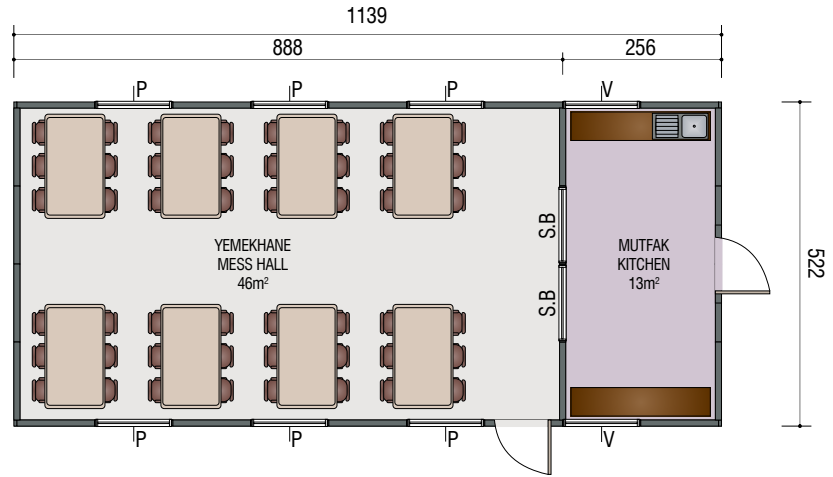
# Prefabrik Yemekhane Planları

Prefabricated Mess Hall Plans

## VPYMH-01

Prefabric Yemekhane Planları 59 m<sup>2</sup>

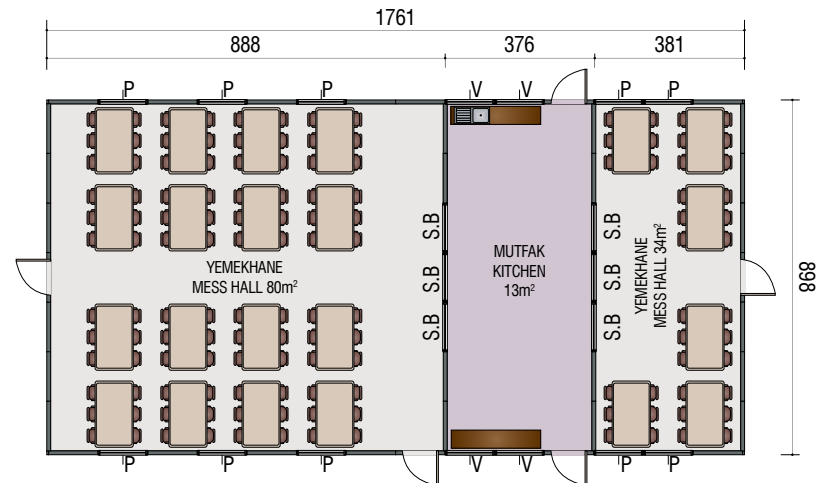
Prefabricated Mess Hall Plans 59 m<sup>2</sup>



## VPYMH-02

Prefabrik Yemekhane Planları 158 m<sup>2</sup>

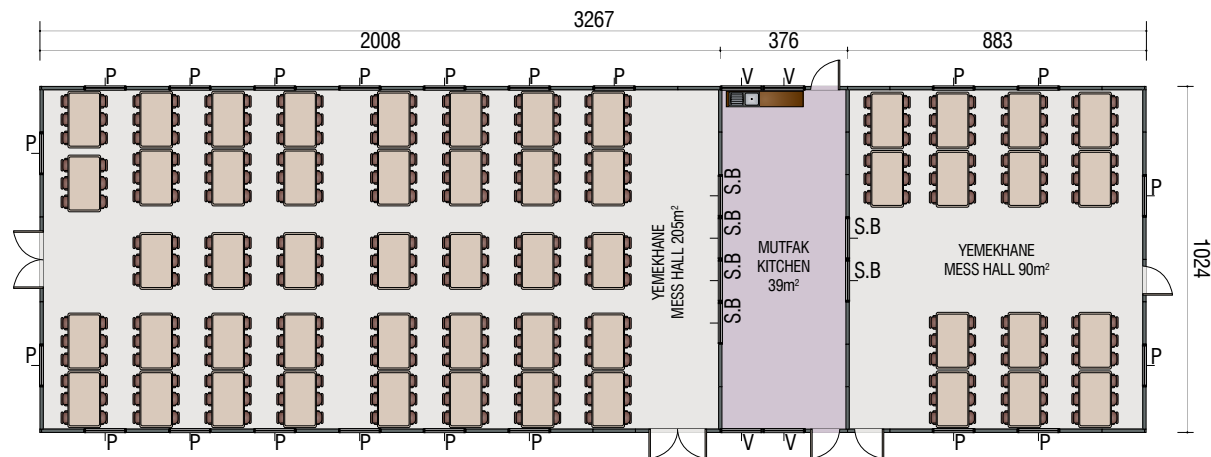
Prefabricated Mess Hall Plans 158 m<sup>2</sup>





## VPYMH-03 Prefabrik Yemekhane Planları 335 m<sup>2</sup>

Prefabricated Mess Hall Plans 335 m<sup>2</sup>





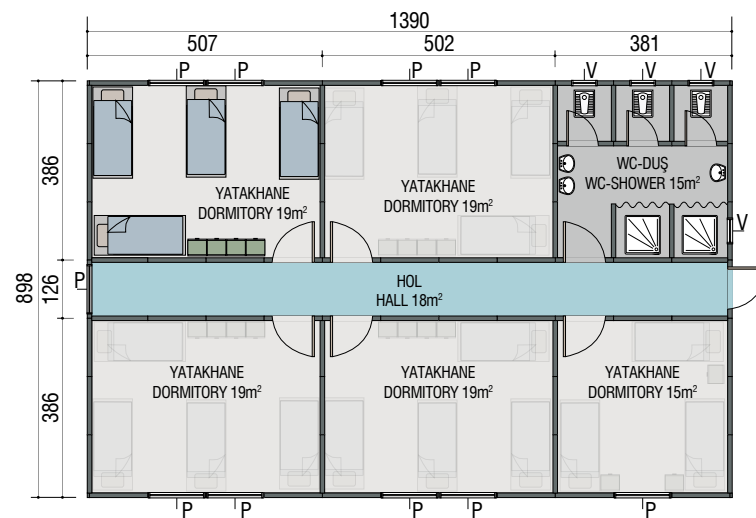


# Prefabrik Yatakhane Planları

Prefabricated Dormitory Plans

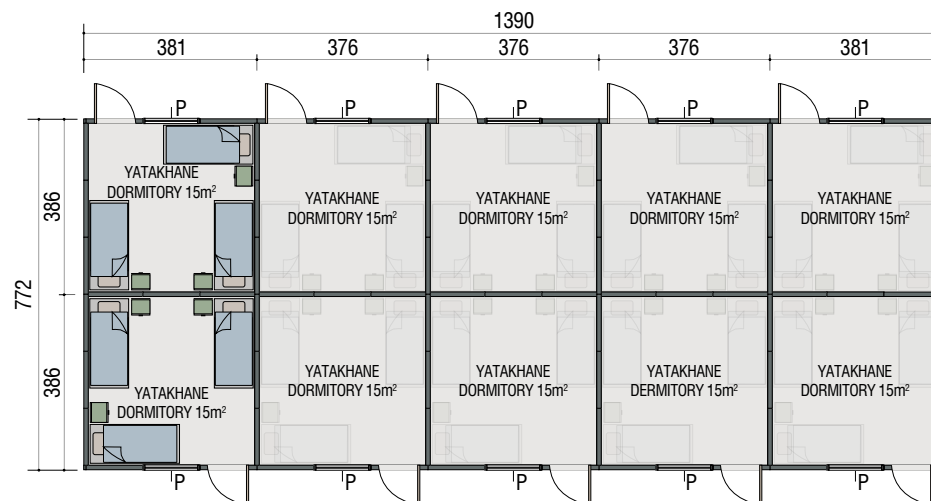
## VPYTH-01 Prefabrik Yatakhane Planları 124 m<sup>2</sup>

Prefabricated Dormitory Plans 124 m<sup>2</sup>



## VPYTH-02 Prefabrik Yatakhane Planları 107 m<sup>2</sup>

Prefabricated Dormitory Plans 107 m<sup>2</sup>

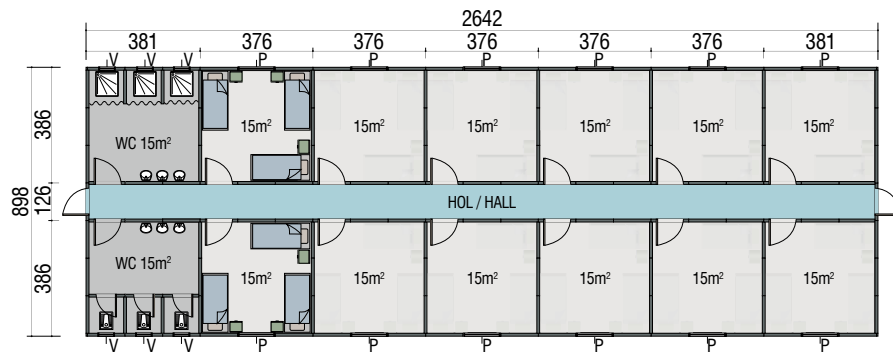


# Prefabrik Yatakhane Planları

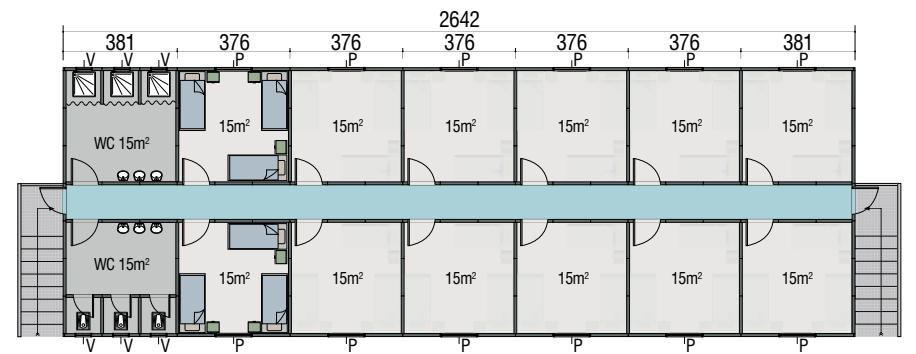
Prefabricated Dormitory Plans

## VPYTH-03 Prefabrik Yatakhane Planları 474 m<sup>2</sup>

Prefabricated Dormitory Plans 474 m<sup>2</sup>



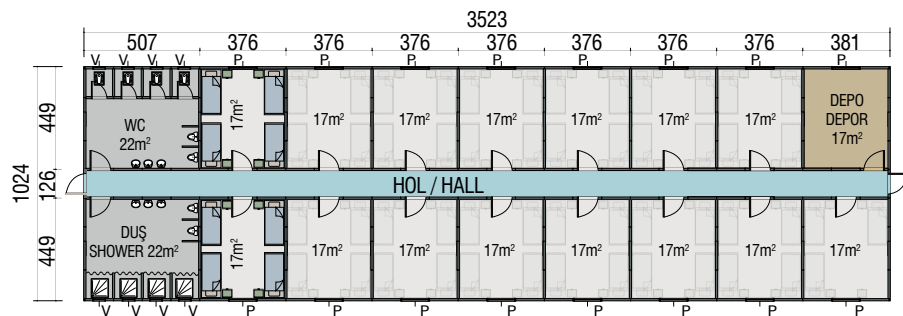
Zemin Kat Planı (237 m<sup>2</sup>)  
Ground Floor



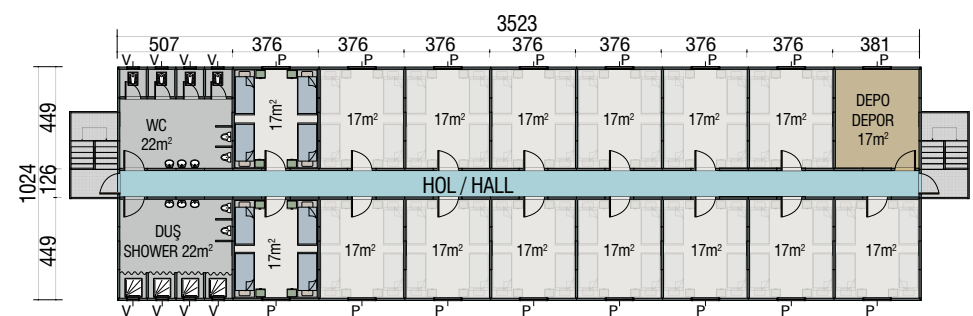
1. Kat Planı (237 m<sup>2</sup>)  
First Floor

## VPYTH-04 Prefabrik Yatakhane Planları 1080 m<sup>2</sup>

Prefabricated Dormitory Plans 360m<sup>2</sup>



Zemin Kat Planı (360 m<sup>2</sup>)  
Ground Floor

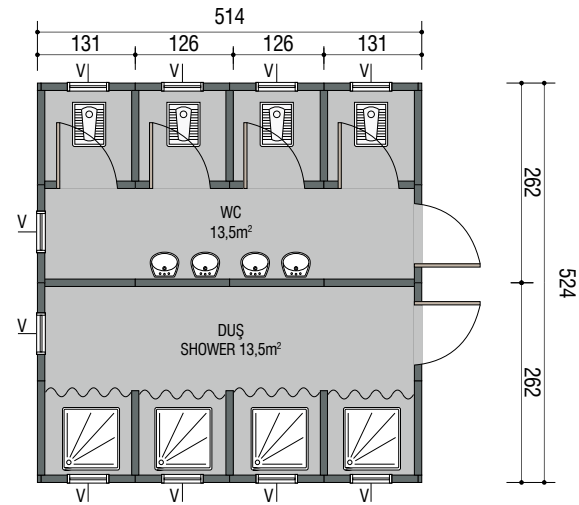


1. ve 2. Kat Planı (360 m<sup>2</sup>)  
First and Second Floor

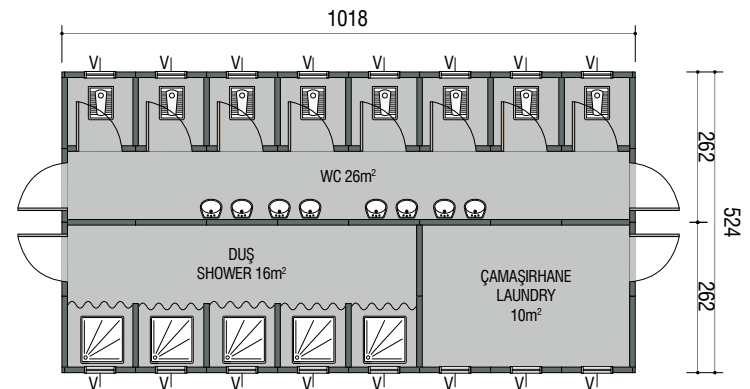
# Prefabrik WC-Duş Planları

Prefabricated WC-Shower Plans

**VPWCD-02 Prefabrik WC-Duş Planları 27 m<sup>2</sup>**  
Prefabricated WC-Shower Plans 27m<sup>2</sup>

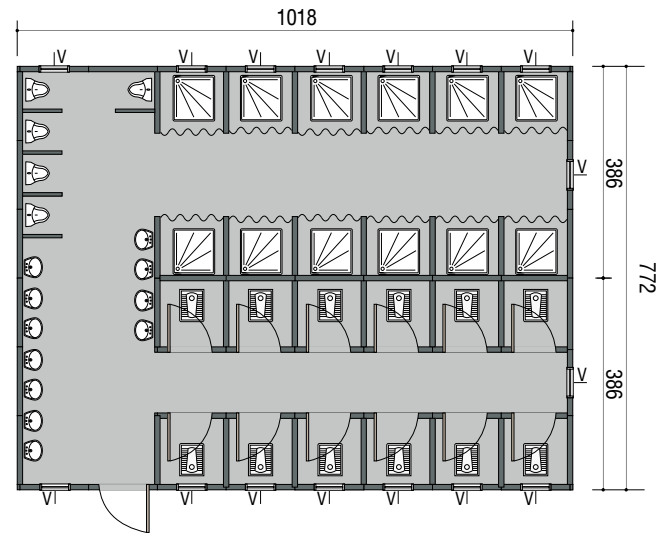


**VPWCD-03 Prefabrik WC-Duş Planları 53 m<sup>2</sup>**  
Prefabricated WC-Shower Plans 53m<sup>2</sup>

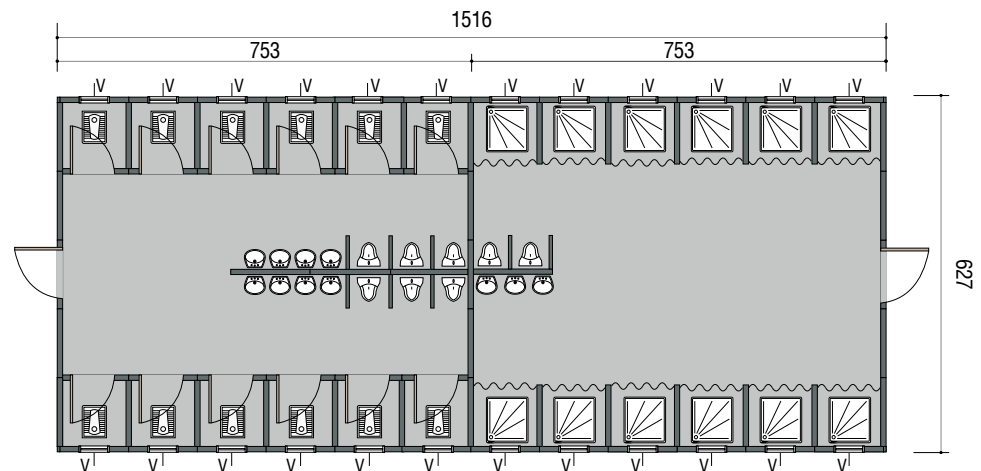




**VPWC-04 Prefabrik  
WC-Duş Planları 78 m<sup>2</sup>**  
Prefabricated WC-Shower Plans 78m<sup>2</sup>



**VPWCD-05 Prefabrik  
WC-Duş Planları 95 m<sup>2</sup>**  
Prefabricated WC-Shower Plans 95 m<sup>2</sup>



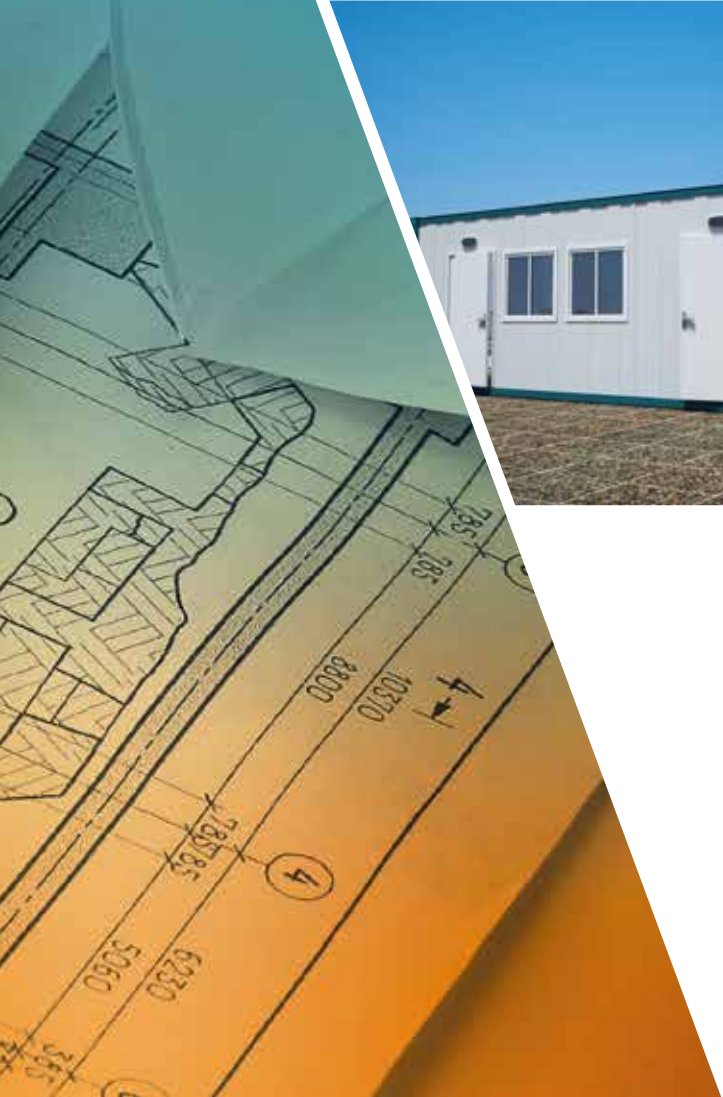






# Yaşam Konteyner Planları

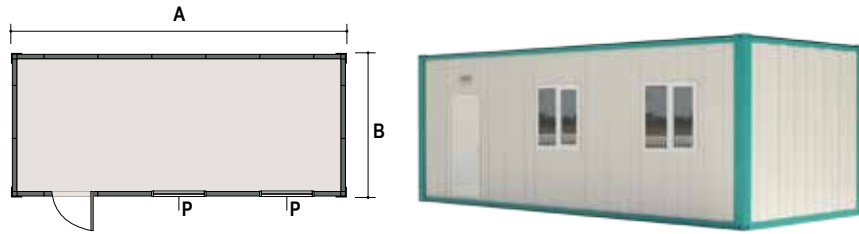
Living Containers Life Plans



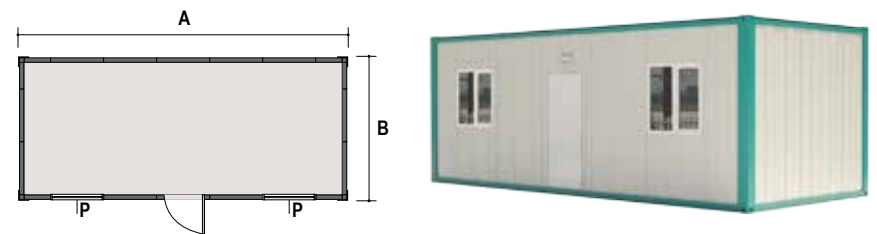
# Konteyner Planları

## Container Plans

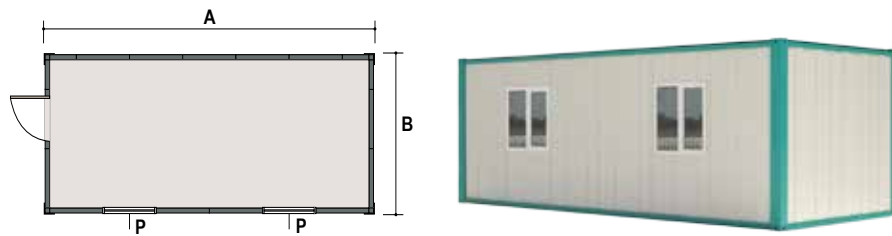
VK-101



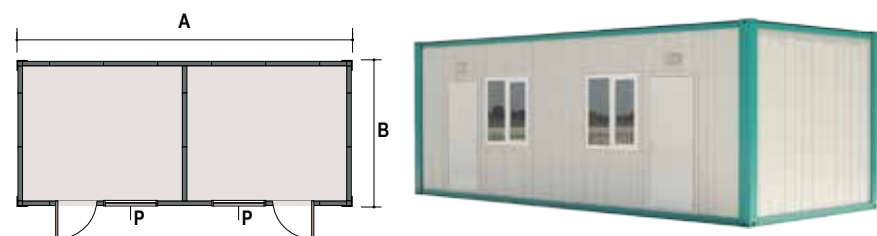
VK-102



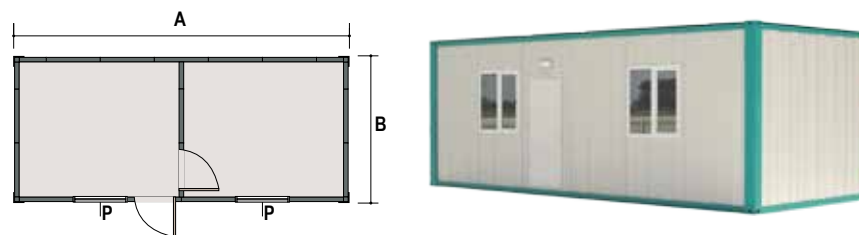
VK-103



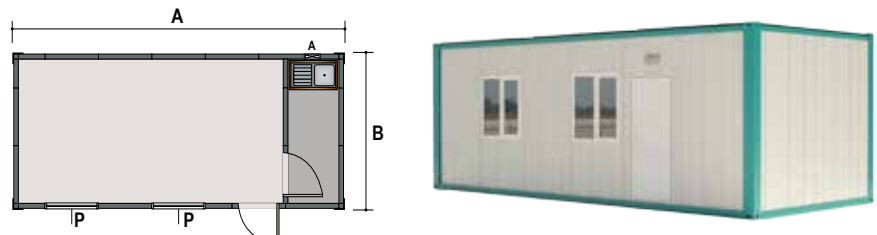
VK-104



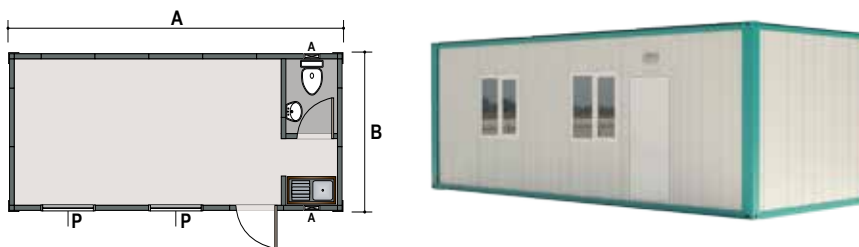
VK-202



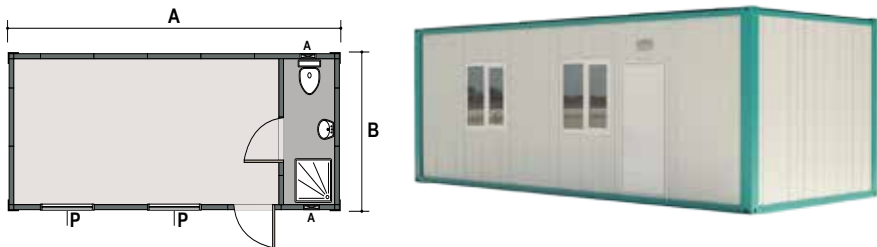
VK-203



VK-204

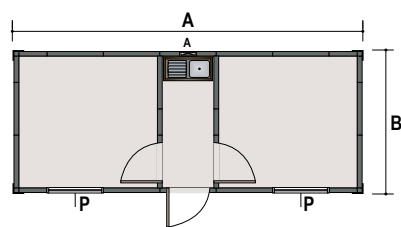


VK-205

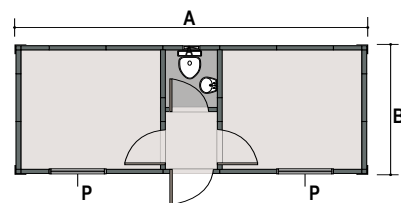


A 7m 6m B 3m 2.4m

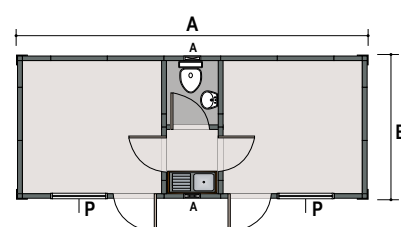
VK-301



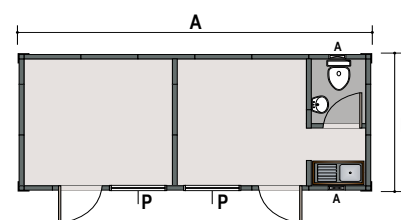
VK-302



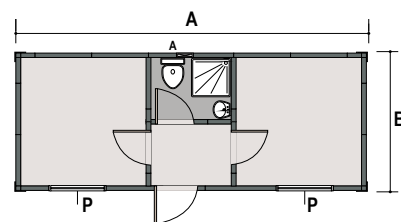
VK-303



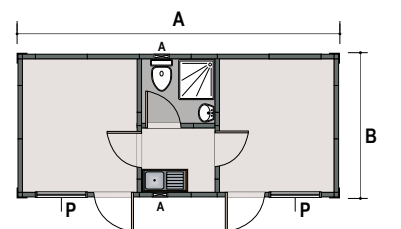
VK-304



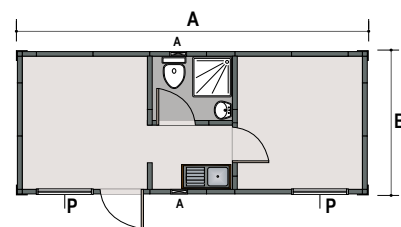
VK-305



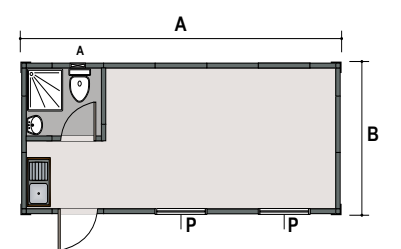
VK-306



VK-701



VK-801

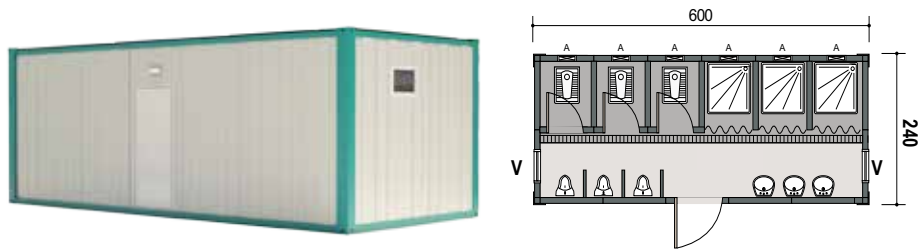


A 7m 6m B 3m 2.4m

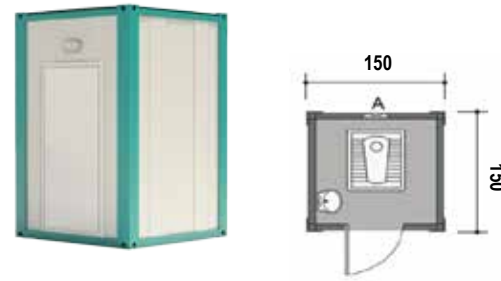
# WC Duş Konteyner Planları

WC Shower Container Plans

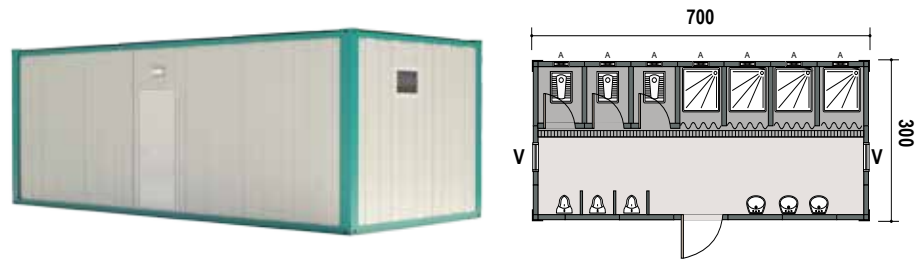
VKW 06



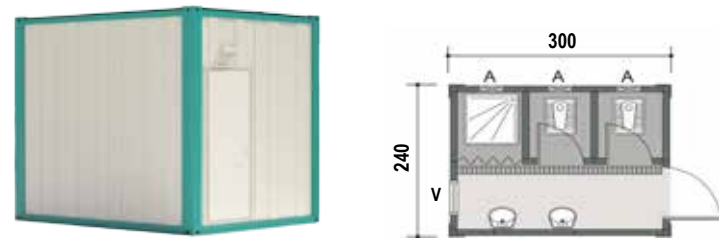
VKW 01



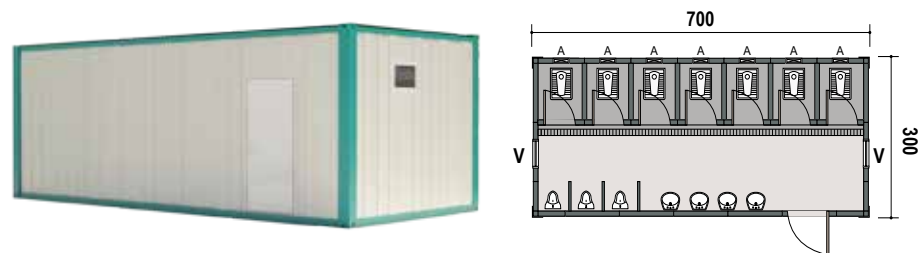
VKW 07



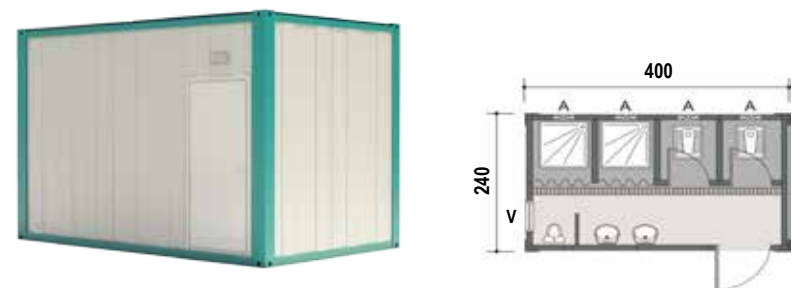
VKW 03



VKW 10



VKW 04

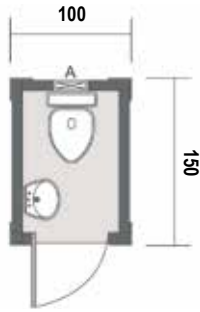




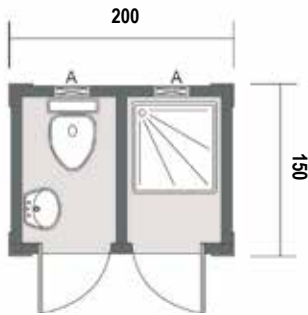
# WC Duş Kabin Planları

WC Shower Cabinet Plans

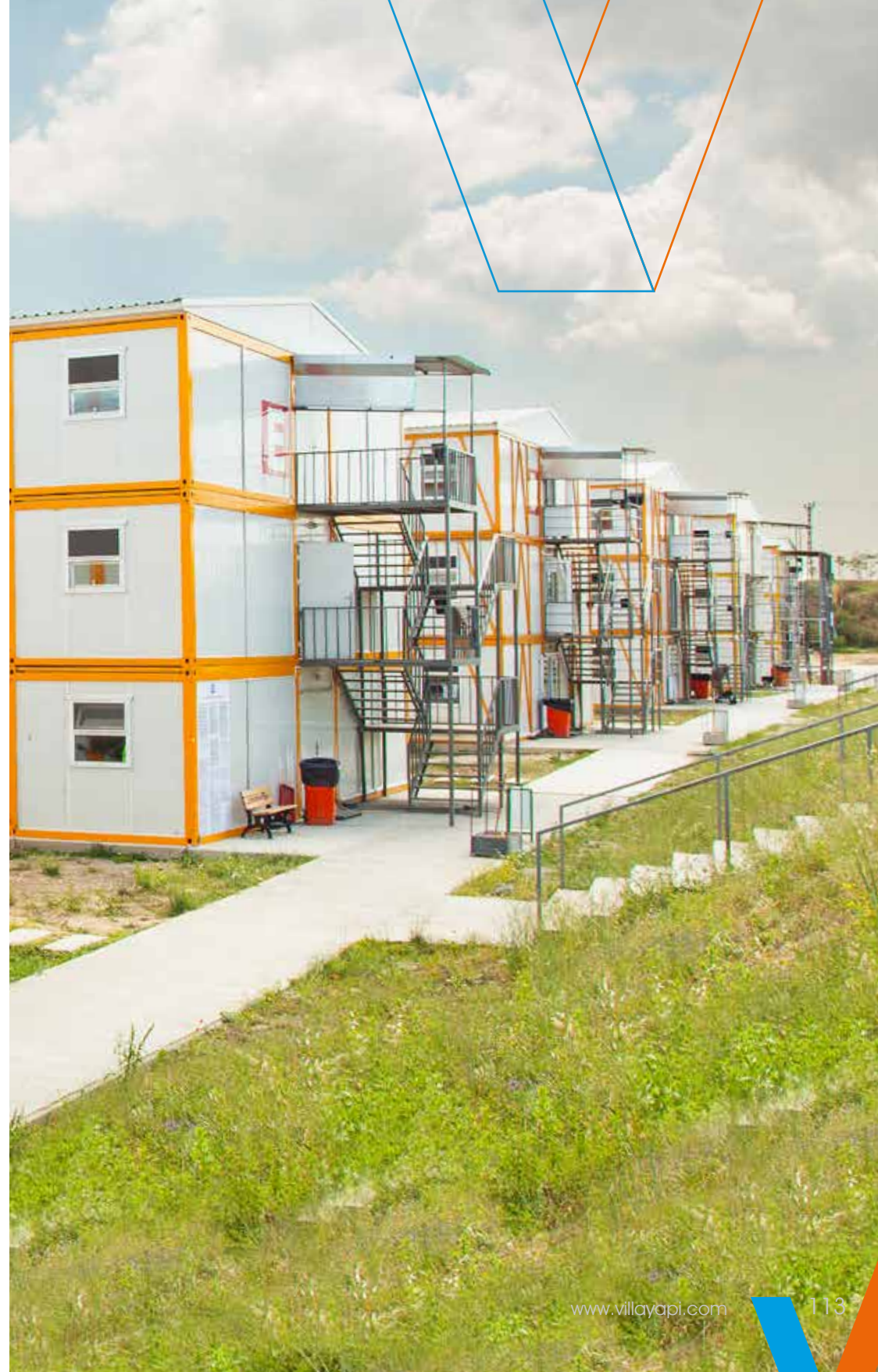
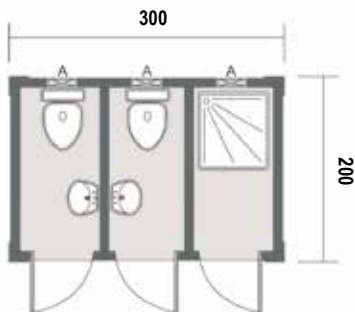
## EKOW101



## EKOW102



## EKOW103



# Konteyner ve Ranza Kesiti

Container & Bunk Section



- 1 PVC Profil Kapağı  
PVC Profile Cover
- 2 30x40 Kutu Profil  
30x40 Box Profile
- 3 2 mm Özel Bükümlü Sac  
2 mm Special Bended Sheet
- 4 0,80 mm Omega Sac  
0.80 mm Omega Sheet

- 1 **Alt Taşıma Konstrüksiyonu**  
1,5 mm Kalınlığında özel form verilmiş galvaniz "C" kullanılarak konstrüksiyon oluşturulur.
- 2 **Üst Taşıma Konstrüksiyonu**  
1,5 mm Kalınlığında özel form verilmiş galvaniz "C" kullanılarak konstrüksiyon oluşturulur.
- 3 **Alt Şase**  
2 mm Kalınlığında özel form verilmiş galvaniz kullanılarak konstrüksiyon oluşturulur.
- 4 **Üst Şase**  
2 mm Kalınlığında özel form verilmiş galvaniz kullanılarak konstrüksiyon oluşturulur.
- 5 **Köşe Direkleri**  
3 mm Kalınlığında özel form verilmiş galvaniz kullanılarak konstrüksiyon oluşturulur.
- 6 **Dış Duvarlar**  
0,50 mm kalınlığında, mikro lambri baskı, boyalı galvaniz sac arası 40 mm kalınlığında 16kg/m<sup>3</sup> yoğunluğunda polistren köpük kullanılır.
- 7 **İç Duvarlar**  
0,50 mm kalınlığında, mikro lambri baskı, boyalı galvaniz sac arası 40 mm kalınlığında 16kg/m<sup>3</sup> yoğunluğunda polistren köpük kullanılır.
- 8 **İç Yüzey Tavan Kaplama**  
10mm Beyaz, yüksek kalitede Pvc lambri kullanılır.
- 9 **Zemin Kaplama**  
16 mm Kalınlığında betopan levhalar.
- 10 **Çatı İzolasyon**  
80mm 14 kg/m<sup>3</sup> Kalınlığında şilte cam yünü kullanılır.
- 11 **Çatı Kaplama**  
0.50mm kalınlığında natural galvaniz trapez sac kullanılır.
- 12 **Zemin Kaplama**  
2 mm Kalınlığında PVC mineflo,
- 13 **İç Kapılar**  
80 x 198 ebatında olup,kanatları çift taraflı md f kapıdır.
- 14 **Pencereler**  
95 / 100 Ölçülerinde PVC Pencere PAKPEN Marka,
- 15 **"H" Direk**  
Özel form verilmiş boyalı galvaniz sac kullanılır.
- 16 **Menfez** (WC ve Banyo ünitelerinde, havalandırma maksatlı 30x20 cm ebatlarında kullanılır.

- 1 **Bottom Bearer**  
The bottom bearer is produced using 1.5 mm thick specially formed galvanised "C" profiles.
- 2 **Top Bearer**  
The top bearer is produced using 1.5 mm thick specially formed galvanised "C" profiles.
- 3 **Bottom Chassis**  
Bottom chassis is produced using 2 mm thick specially formed galvanised sheet.
- 4 **Top Chassis**  
Top chassis is produced using 2 mm thick specially formed galvanised sheet.
- 5 **Corner Posts**  
Corner posts are produced using 3 mm thick specially formed galvanised sheet.
- 6 **External Walls**  
Between 0,50 mm thick,micro pressed,painted galvanised sheets, 40 mm thick 16 kg/m<sup>3</sup> density Polystyrene Foam is used.
- 7 **Internal Walls**  
Between 0,50 mm thick,micro pressed,painted galvanised sheets, 40 mm thick 16 kg/m<sup>3</sup> density Polystyrene Foam is used.
- 8 **Inner Surface Ceiling Covering**  
10mm thick, high quality white pvc wainscots are used.
- 9 **Floor Covering**  
First 16 mm thick cemented chipboards (Betopan) are applied and then 2 mm thick PVC covering material
- 10 **Roof Insulation**  
80 mm thick, 16 kg/m<sup>3</sup> density glass wool blanket is used
- 11 **Roof Covering**  
0,50 mm thick natural galvanised trapezoidal sheets are used
- 12 **Flooring**  
2 mm Thickness PVC Mineflo
- 13 **Interior Doors**  
80x198 sized ,wings are double-sided MDF door.
- 14 **Windows**  
95/100 sized PVC Windows (Pakpen)
- 15 **"H" Post**  
Specially formed galvanised sheet is used.
- 16 **Culvert**  
30x20 sized air ventilation culverts are used at WC and shower units

# Grup Yemekhane Planları

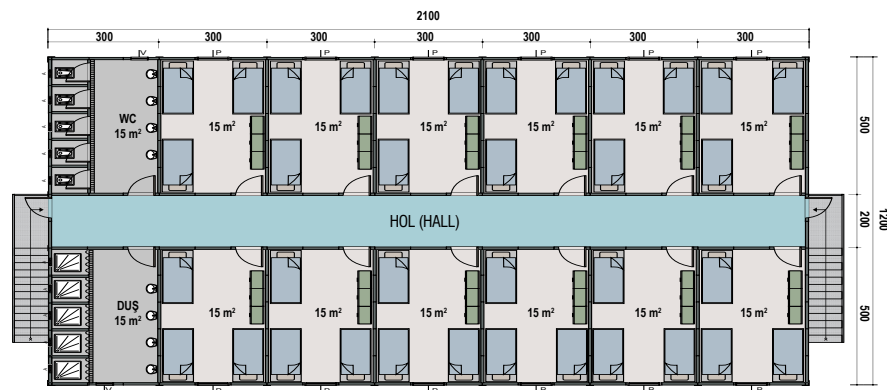
Group Mess Hall Plans

## Grup Yemekhane ve Yatakhane 504 m<sup>2</sup>

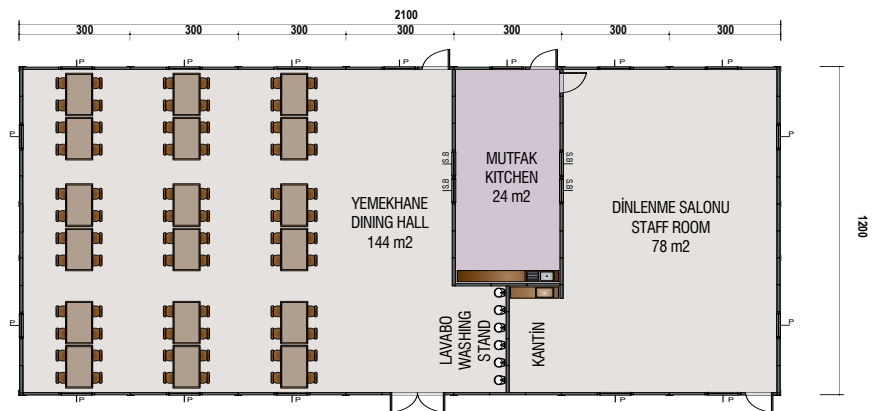
Prefabricated Mess Hall and Dormitory Plans 504 m<sup>2</sup>



Üst Kat Planı / First Floor (252m<sup>2</sup>)



Zemin kat / Ground Floor (252m<sup>2</sup>)



# Grup Ofis Planları

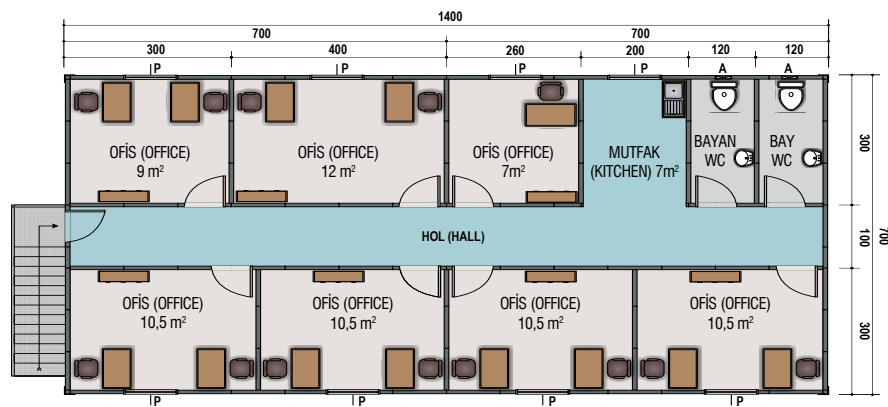
Group Office Plans

## Grup Ofis Planı 196 m<sup>2</sup>

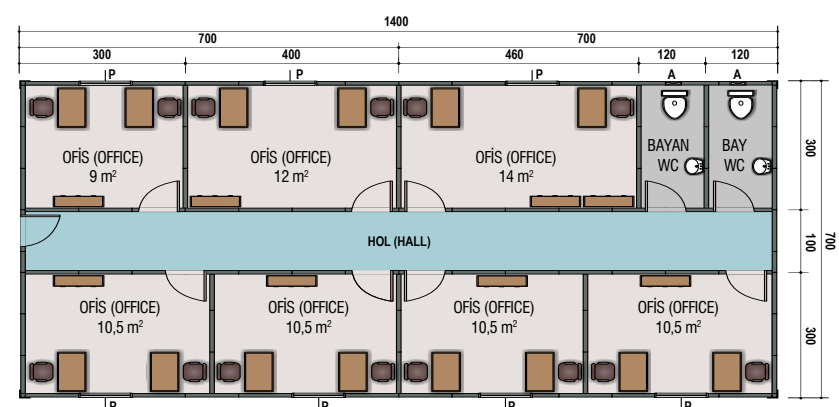
Prefabricated Office Plans 196 m<sup>2</sup>



Üst Kat Planı / First Floor (98m<sup>2</sup>)



Zemin kat / Ground Floor (98m<sup>2</sup>)



# Grup Ofis Planları

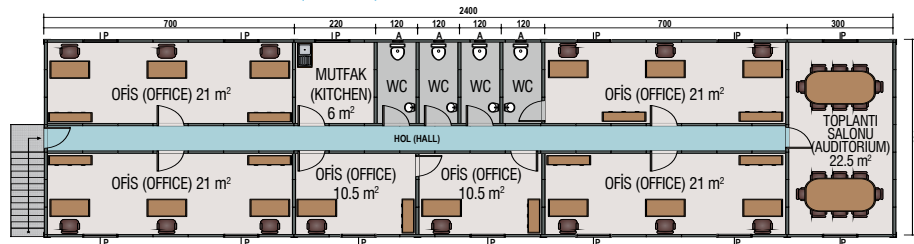
Group Office Plans

## Grup Ofis Planı 360 m<sup>2</sup>

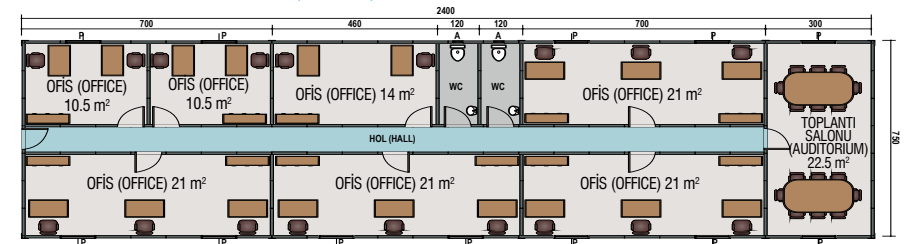
Prefabricated Office Plans 360 m<sup>2</sup>



Üst Kat Planı / First Floor (180m<sup>2</sup>)



Zemin kat / Ground Floor (180m<sup>2</sup>)



# Grup Yatakhane Planları

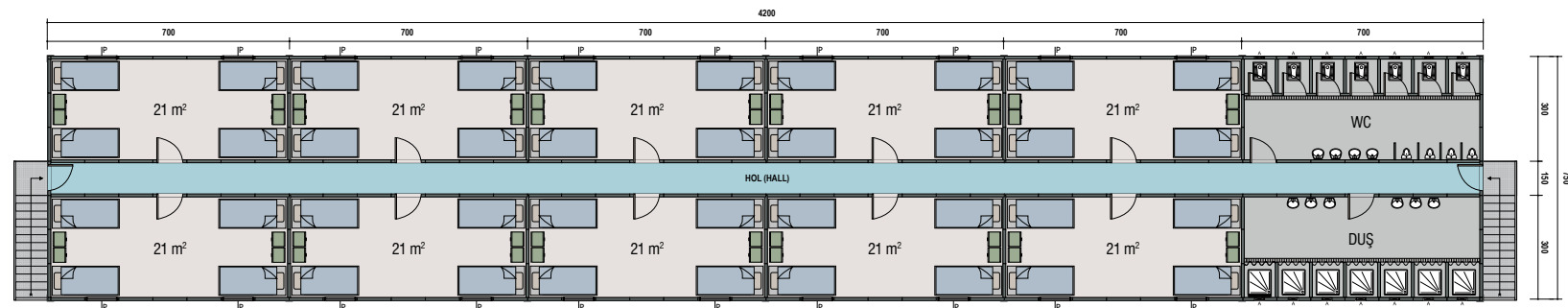
Group Dormitory Plans

## Grup Yatakhane Planı 630 m<sup>2</sup>

Prefabricated Dormitory Plans 630 m<sup>2</sup>



Üst Kat Planı / First Floor (315m<sup>2</sup>) Zemin kat / Ground Floor (315m<sup>2</sup>)







# Demonte Konteyner

Demountable Container







# Demonte Konteyner

Demountable Container

3m x 7m, 2.4m x 6m ve İsteğe Bağlı Ölçüler

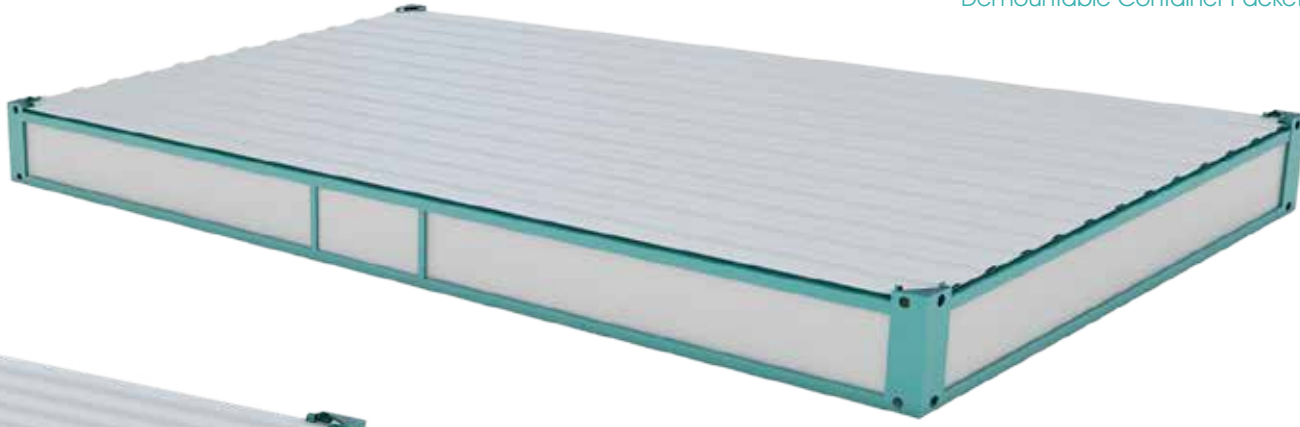
3m x 7m, 2.4m x 6m and Optional Sizes



Tek Seferde  
**8 Konteyner**

8 Containers at one time

Demonte Konteyner Paket  
Demountable Container Packet



Demonte Konteyner  
Demountable Container



Hızlı  
Kurulum  
Quick Assembling



# Römorklu Konteyner

Trailer Container







# Lüks Kabinler

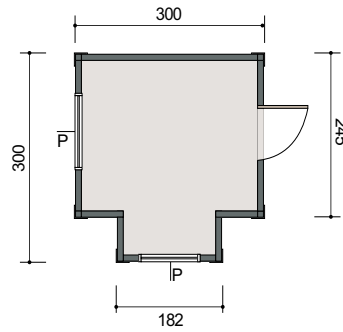
Luxury Cabins



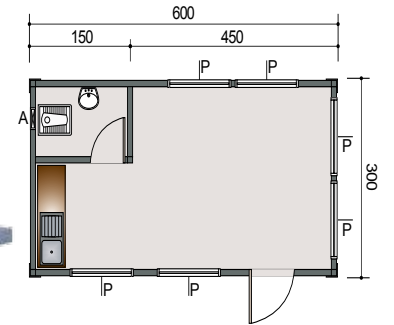
# Lüks Kabin Planları

Luxury Cabinet Plans

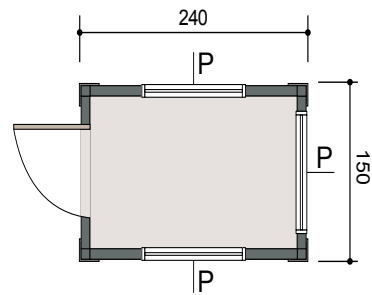
VKK010



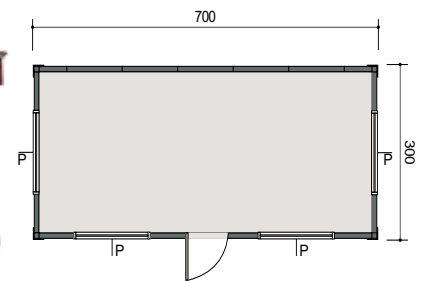
VKK011



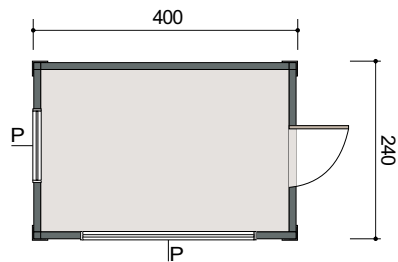
VKK012



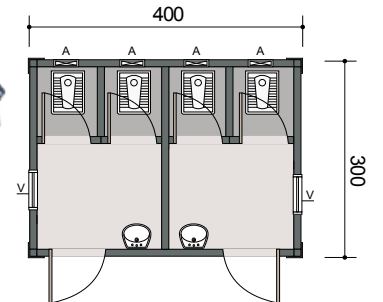
VKK013



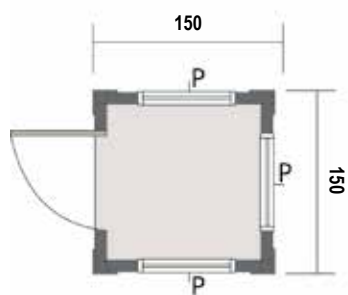
VKK014



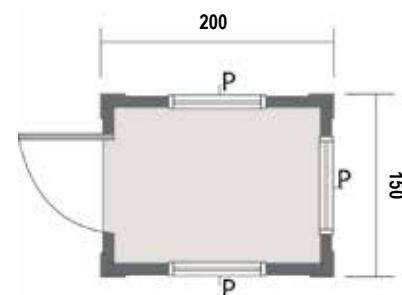
VKK015



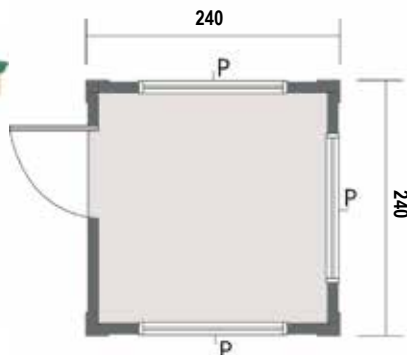
VLK101



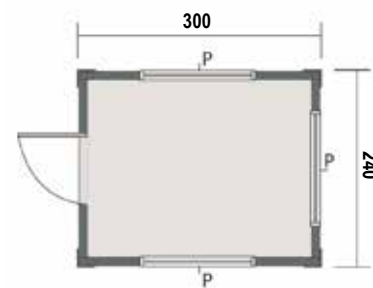
VLK102



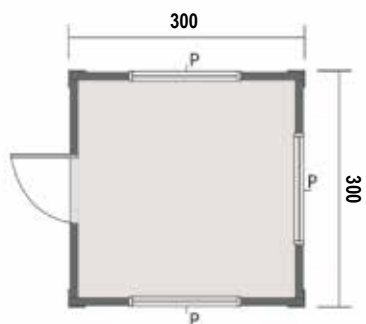
VLK103



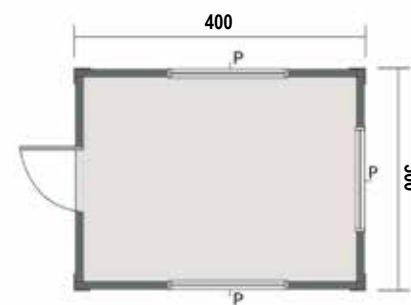
VLK104



VLK105



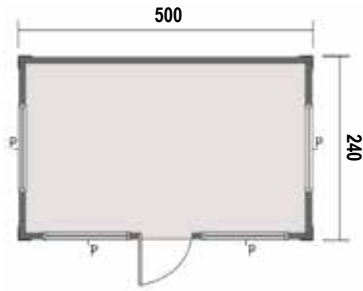
VLK106



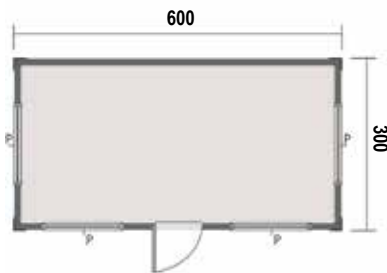
# Lüks Kabin Planları

Luxury Cabinet Plans

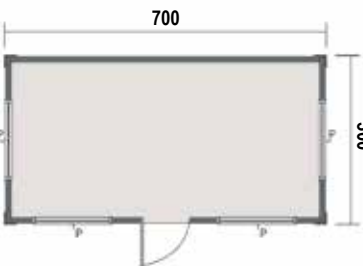
## VLK107



## VLK108



## VLK109







# Güvenlik Kabinleri

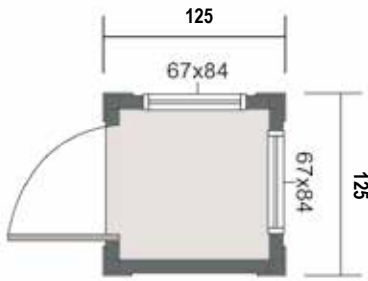
Security Cabins



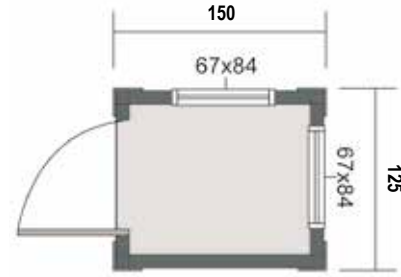
# Güvenlik Kabin Planları

Security Cabinet Plans

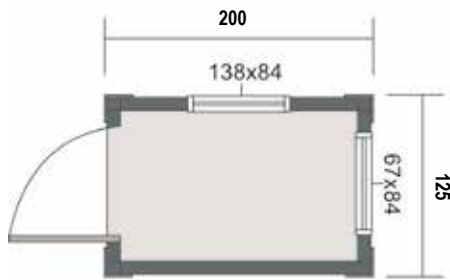
EKO101



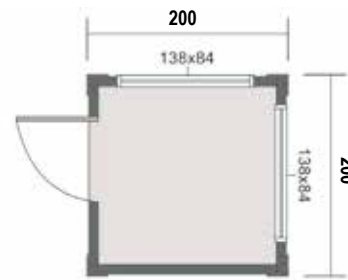
EKO102



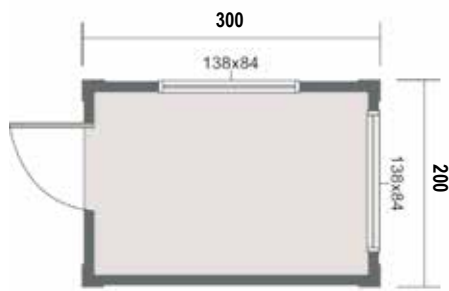
EKO103



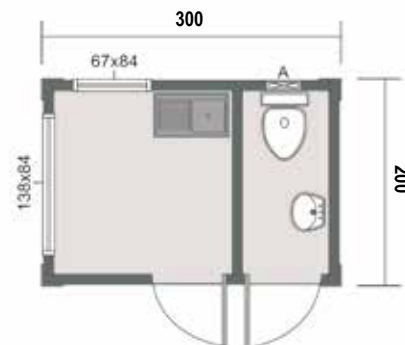
EKO104



EKO105

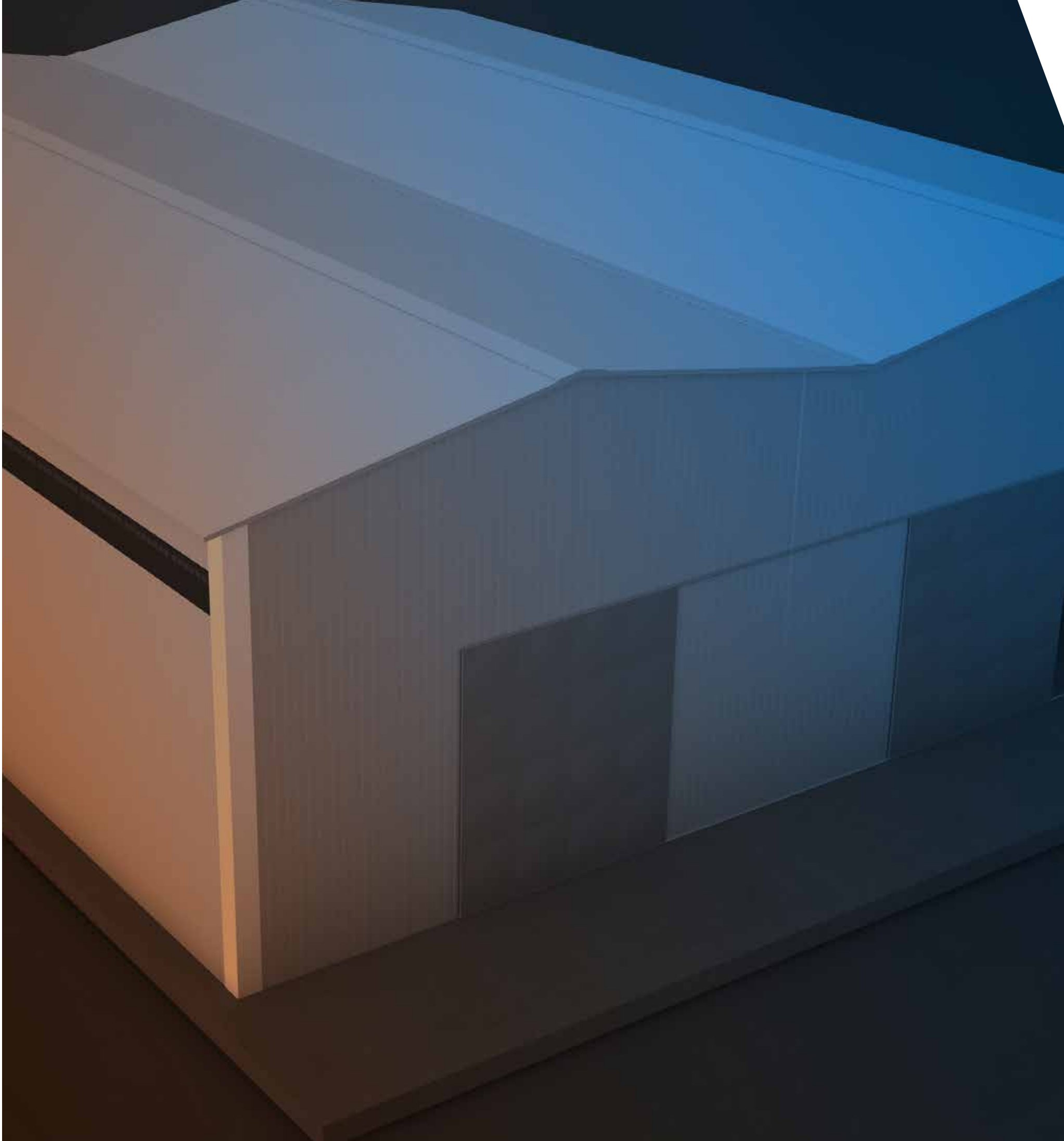


EKO106









# Depo Hangar Binaları

Storage Buildings and Sheds



# Hangar Bina Kesiti

Shed Buildings Section

## İzoleli Çatı ve Cephelerde, Sandviç Panel Kaplama

Isolated Roof and Fronts Sandwich  
Panel Covering

## İzolesiz Çatı ve Cephelerde, 0.50 mm Galvaniz Trapez Sac Kaplama

Non-insulated Roofs and Fronts,  
0.50 mm Galvanized Trapezoid  
Sheet Covering

## Defalarca Sökülüp Takılma Özelliği

Repeated Disassembly  
and Reassembly Property

## Yapısal Çelik Sistemi

Constructional  
Steel System

## İsteğe Bağlı Vinç Yolu Sistemi

Optional Crane Road System



## Her İklim için Ayrı Hesaplanan Karkas Sistemi

Carcass System that Calculated Separately  
for Each Climate Conditions



# Prefabrik Bina Teknik Özellikleri

## Prefabricated Buildings Technical Datas

<b>STANDARTLAR</b>	Çelik Malzeme Hesap Kriterleri Betopan Cam Yünü Polistren Köpük	St 37 TS 648, TS 498, TS 11372 TSEN 634-2 TS 901, DIN 18165 TS 7316		
<b>HESAP KRİTERLERİ</b>	İmalatlar 90 kg/m <sup>2</sup> karyükü, 90 km/saat rüzgar hızı, birinci derece deprem şartları ve üç iklim bölgesi esas alınarak üretilmektedir.			
<b>TAŞIYICI SİSTEM</b>	Galvaniz Sac'dan Rollform makinasıyla çekilen taşıyıcı H profiller ile makas imalatında kullanılan Rollform makinasında çekilen galvaniz U profilli binaların ana taşıyıcı iskeletini oluşturur. Makasları birbirine bağlamak ve yapıyı rijit hale getirmek için Rollform makinasında çekilmiş omega aşıklar kullanılır.			
<b>YAPISAL ÇELİK</b>	Prefabrik bina malzeme kesit tayini Sap 2000 hesap yöntemiyle yapılar Auto CAD programında çizilip resimler halinde imalata verilir. Tüm taşıyıcı sistem Rollform makinasından çekilen özel H, C ve U modellenli Galvaniz profillerinden oluşur.			
<b>PLAN</b>	Ön üretilmiş prefabrike yapılar genişlik ve uzunlukları 125 cm'nin katları olacak şekilde uygulanır. Prefabrike yapılar 4 farklı panelin modülasyonundan meydana gelmektedir. Dolu duvar paneli, pencere duvar paneli, vasistaslı duvar paneli ve kapılı duvar paneli olarak imal edilen parçalardan en ağırlı dış kapılı paneldir. (90 kg) Tüm mimari çizim ve hesaplamalar, teknik personelimiz tarafından, Autocad ve SAP 2000 programları kullanılarak yapılmaktadır.			
<b>DIŞ DUVARLAR</b> H: 2500 mm Kalınlık: 100 mm	<b>Dış Yüzey</b>	8 mm Kalınlığında Çimentolu Yonga Levha (Betopan)	<b>İÇ DUVARLAR</b> H: 2500 mm Kalınlık: 60 mm	8 mm Kalınlığında Çimentolu Yonga Levha (Betopan)
	<b>İç Yüzey</b>	8 mm Kalınlığında Çimentolu Yonga Levha (Betopan)		8 mm Kalınlığında Çimentolu Yonga Levha (Betopan)
	<b>Birleşim Elemanları</b>	Galvaniz Rollform makinası ile tek malzemeden çekilir.		Galvaniz Rollform makinası ile tek malzemeden çekilir.
	<b>İzolasyon</b>	80 mm Kalınlığında 16 kg/m <sup>3</sup> B:1 Yanmaz Polistren Köpük.		40 mm Kalınlığında 16 kg/m <sup>3</sup> B:1 Yanmaz Polistren Köpük.
<b>DUVAR BİRLEŞİMİ</b>	Birleşim elemanları özel U ve H profilleri GALVANİZ sac malzemeden bükülerek özel kenet sistemi ile birleştirilir. Kenarlarda radius oluştuğundan terleme sonucu paslanma olmaz.			
<b>TAVAN</b>	<b>Kaplama</b>	<b>Normal Mekan:</b> 12 mm Kalınlığında Alçıpan Levha <b>Islak Mekan:</b> 12 mm Kalınlığında Yeşil Alçıpan		
	<b>Birleşim Elemanları</b>	Birleşim elemanları elektrostatik boyalı galvaniz sac.		
	<b>İzolasyon</b>	80 mm Kalınlığında Rulo camyünü (TSE standartlarında).		
<b>ÇATI KAPLAMA</b>	<b>Kaplama</b>	27/200 formunda DIN EN 10142'ye göre üretilmiş 0.50 mm kalınlığında 27 mm hadveli trapez kesitli boyalı galvaniz sac.		
	<b>Makas</b>	S320 GD+Z, AZ Erdemir kalite No:1322 olan galvaniz sacdan özel olarak dizayn edilen profiller kullanılarak dizayn edilmiş makas sistemidir.		
	<b>Aşıklar</b>	Rollform Makinasında Çekilmiş Galvaniz sacdan yapılır.		
	<b>Saçaklar</b>	30 cm genişliğinde özel bükümlü galvaniz sac ile kaplanır.		
	<b>Dereler</b>	150 mm PVC Kare yağmur dereleri ve inişleri.		
<b>KAPILAR</b>	<b>İç Kapılar</b>	80x198 cm ebatında metal kasalı olup kanatları çift taraflı Amerikan Kapı yapılmaktadır.		
	<b>Dış Kapılar</b>	90x205 cm ebatında izoleli sac kapı (TSE standartlarında).		
<b>PENCERELER</b>	<b>Pencere</b>	120/120 Ölçülerinde PVC Pencere (TSE standartlarında)		
	<b>Pencere Kasası</b>	1,2 mm kalınlığında soğuk şekillenmiş galvaniz sacdan oluşturulur.		
	<b>Vasistas</b>	50/120 cm ebatlarında PVC doğrama (TSE standartlarında)		
<b>CAM</b>	<b>Pencere</b>	4+12,5+4 mm kalınlıkta ısıcam		
	<b>Vasistas</b>	Buzlu tek cam		
<b>BOYA</b>	<b>Dış Cephe</b>	Çift kat akrilik dış cephe boyası. (TSE standartlarında)		
	<b>Metal Aksam</b>	Çift kat astar ve çift kat yağlı boya. (TSE standartlarında)		
	<b>İç Cephe</b>	Çift kat plastik boya. (TSE standartlarında)		
	<b>Tavan</b>	Çift kat plastik boya. (TSE standartlarında)		
<b>ELEKTRİK TESİSATI (SIVA ALTI)</b>	<b>Kablo</b>	3*2,5 Nym TSE Standartlarında kablo kullanılır.		
	<b>Priz ve Düğmeler</b>	(TSE Belgeli)		
	<b>Aydınlatma</b>	2*40 Florasan armatür.		
	<b>WC Banyo</b>	Yuvarlak Glop aydınlatma kullanılır.		
	<b>Kapı Üstü</b>	Dış kapı üzeri Glop kullanılır		
<b>SIHHİ TESİSAT (SIVA ALTI)</b>	<b>Temiz Su Boruları</b>	PVC Boru (TSE standartlarında)		
	<b>Pis Su Boruları</b>	PVC Boru (TSE standartlarında)		
	<b>Vitrifiyeler ve Armatürler</b>	(TSE standartlarında)		

<b>MATERIAL STANDARTS</b>	Steel Material	St 37	Calculation Cryteria	TS 648, TS 498 , TS 11372	Betopan	TSEN 634-2	Glass Wool	TS 901, DIN 18165	Polystyrene Foam	TS 7316
<b>CALCULATION</b>	Products are manufactured on the basis of three climate zones,90 kg/m <sup>2</sup> snow load,90 km/h wind speed and first degree earthquake conditions.									
<b>CARRIER SYSTEM</b>	C and U profiles are selected as the carrier beam as a result of the static calculation results.By using the galvanised special omega roof profiles the structure is made a rigid form. Diyoganel links by removing braces are made with galvanized steel bolts and nuts.Structure has the ability to allow disassembly and reassembly many times.Tremors completely blocked.									
<b>STRUCTURAL STEEL</b>	Steel Hangar cross-sectional determination of material is produced using material accounting method SAP 2000 Auto CAD program structures in images drawn from the reports .Sap 2000 program will be presented to the recipient.(ALL GALVANISED MATERIALS AND PARTS ARE BOUGHT FROM ERDEMİR COMPANY.)									
<b>EXTERNAL WALLS</b> H:2500 mm Thickness: 100 mm, Press Panel	<b>Outer Surface</b>	8 mm Thickness Cemented Chipboard Plate (TEPE BETOPAN)				<b>INTERNAL WALLS</b> H:2500 mm Thickness: 60 mm, Press Panel	8 mm Thickness Cemented Chipboard Plate (TEPE BETOPAN)			
	<b>Inner Surface</b>	8 mm Thickness Cemented Chipboard Plate (TEPE BETOPAN)					8 mm Thickness Cemented Chipboard Plate (TEPE BETOPAN)			
	<b>Joint Equipments</b>	Made of galvanized steel roll former machine with a single shot.					Made of galvanized steel roll former machine with a single shot.			
	<b>Insulation</b>	80 mm Thickness 16kg/m <sup>3</sup> B1 Class Unflammable POLYSTYRENE FOAM					40 mm Thickness 16kg/m <sup>3</sup> B1 Class Unflammable POLYSTYRENE FOAM			
<b>WALL JOINTS</b>	Joint equipments,Special H and U Profiles, are twisted from Galvanised Steel Sheet and jointed with a special clamping system...Due to the radius of the edges,corrosion does not occur.									
<b>CEILING</b>	<b>Covering</b>	<b>Normal Areas:</b> 12 mm Gypsumboard <b>Wet Areas:</b> 12 mm Green Gypsumboard								
	<b>Joint Equipments</b>	Joint Equipments are electrostatically painted sheet. Among the scissors,vents will be done								
	<b>Insulation</b>	80 mm thickness Glasswool blanket (İZOCAM)								
<b>ROOF COVERING</b>	<b>Covering</b>	0.50 mm Galvanised Red Painted Trapeziodal Sheet								
	<b>Truss</b>	According to the Truss Calculation Cryteria, The H and U Profiles Which are specially formed by Rollform Machines are used (ERDEMİR)								
	<b>Lover-Profiles</b>	Galvanised sheet omega profiles, formed by rollform machine, are used (ERDEMİR)								
	<b>Eaves + Fascias</b>	Coated with 30 cm wide specially bended RAL 9002 painted galvanised sheet. (ERDEMİR)								
	<b>Gutters</b>	PVC Gutter Landing								
<b>DOORS</b>	<b>Internal Doors</b>	80x198 cm sized American Door.								
	<b>Door Frameworks</b>	90x205 cm sized izolated Sheet Door								
<b>WINDOWS</b>	<b>Windows</b>	According to the project,Wooden coloured PVC, 4+12,5+4 mm Double Glazed Windows. (ERPEN BRAND)								
	<b>Window Frames</b>	Made of 1,2 mm Thickness Cold Formed Galvanised Steel Sheet. (ERDEMİR)								
	<b>Transoms</b>	40*60 cm sized PVC, 4mm thickness frosted glass will be used. (ERPEN BRAND)								
<b>GLASS</b>	<b>Windows</b>	4+12, 5+4 mm Thickness Insulating glass								
	<b>Transom</b>	Single Frosted glass								
<b>PAINT</b>	<b>External Side</b>	Double Layer Acrylic Exterior Wall Paint (DYO BRAND)								
	<b>Metal Parts</b>	Double coat of primer and two coats of oil paint (TETRA BRAND)								
	<b>Internal Side</b>	Double layer plastic paint. (DYO BRAND)								
	<b>Roof</b>	60x60 Vinyl Gypsumboard								
<b>ELECTRICAL SYSTEM FLUSH MOUNTED (UNDER THE SURFACE)</b>	<b>Cable</b>	3x2,5 Nym Cable is used. According to T.S.E.								
	<b>Plugs Sockets</b>	T.S.E certified plugs and sockets								
	<b>Luminaires</b>	2x40 FLUORESCENT Luminaries								
	<b>Wc - Bathroom</b>	Round Shape Globe Lightings								
	<b>Door over</b>	Globe Lighting for Over the outer door								
<b>SANITARY SYSTEM (FLUSH MOUNTED - UNDER THE SURFACE)</b>	<b>Clean Water Pipes</b>	PPRC Pipes (According to T.S.E.)								
	<b>Drain Pipes</b>	PPRC Pipes (According to T.S.E.)								
	<b>Vitrified Accessories And Taps</b>	T.S.E certified vitrified accessories and taps								
<b>TRANSPORTATION</b>	Loading and unloading will be organised by buyer. Crane on site (if required) will be provided by Buyer. Transport operation carried out by the buyer where the trucks can not enter.									







## Referanslar / References







**Villa Yapı Mühendislik San. ve Tic. Ltd. Şti**

**Merkez Ofis / Head Office**

İçmeler Mh. Mazhar Sk. No:15-1/11  
Tuzla / İstanbul / Türkiye  
Tel: +90 216 494 49 49 (pbx)  
Faks: +90 216 392 26 91

**Fabrika / Factory**

Cumhuriyet Mh. Güney Yanyol Cd.  
No:24 Gebze / Kocaeli / Türkiye  
Tel: +90 262 653 06 55 (pbx)  
Faks: +90 262 653 06 76

[info@villayapi.com](mailto:info@villayapi.com) [www.villayapi.com](http://www.villayapi.com)

[f /villaprefabrikyapi](https://www.facebook.com/villaprefabrikyapi)  
[@villaprefabrik](https://www.twitter.com/villaprefabrik)